

LX100 FIELD WIRING DIAGRAM

LX-100 Wiring Connections

****Stop and Com must be jumpered when a 3-Button Wall Station is Present**



Rev.
09/11/15

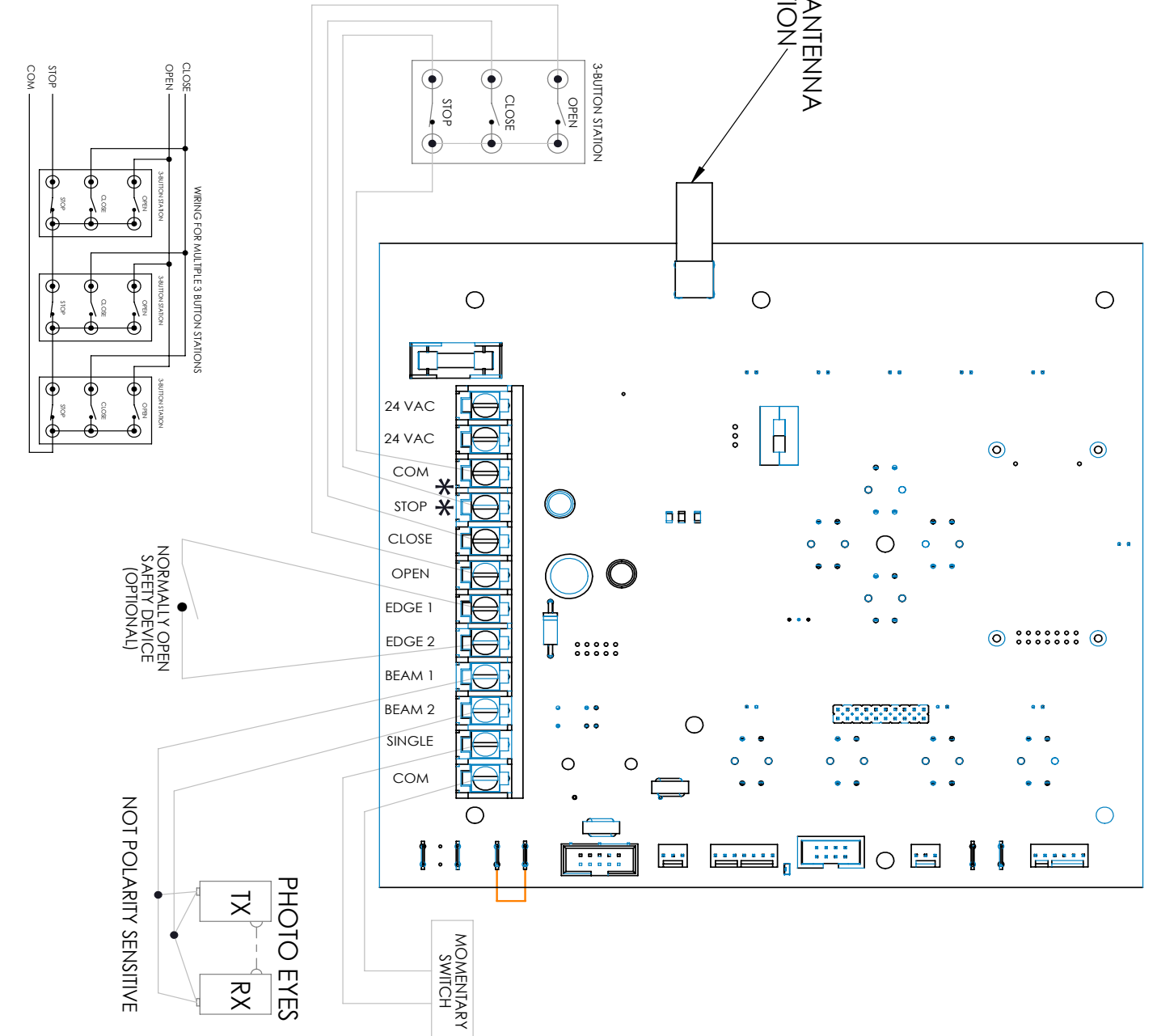


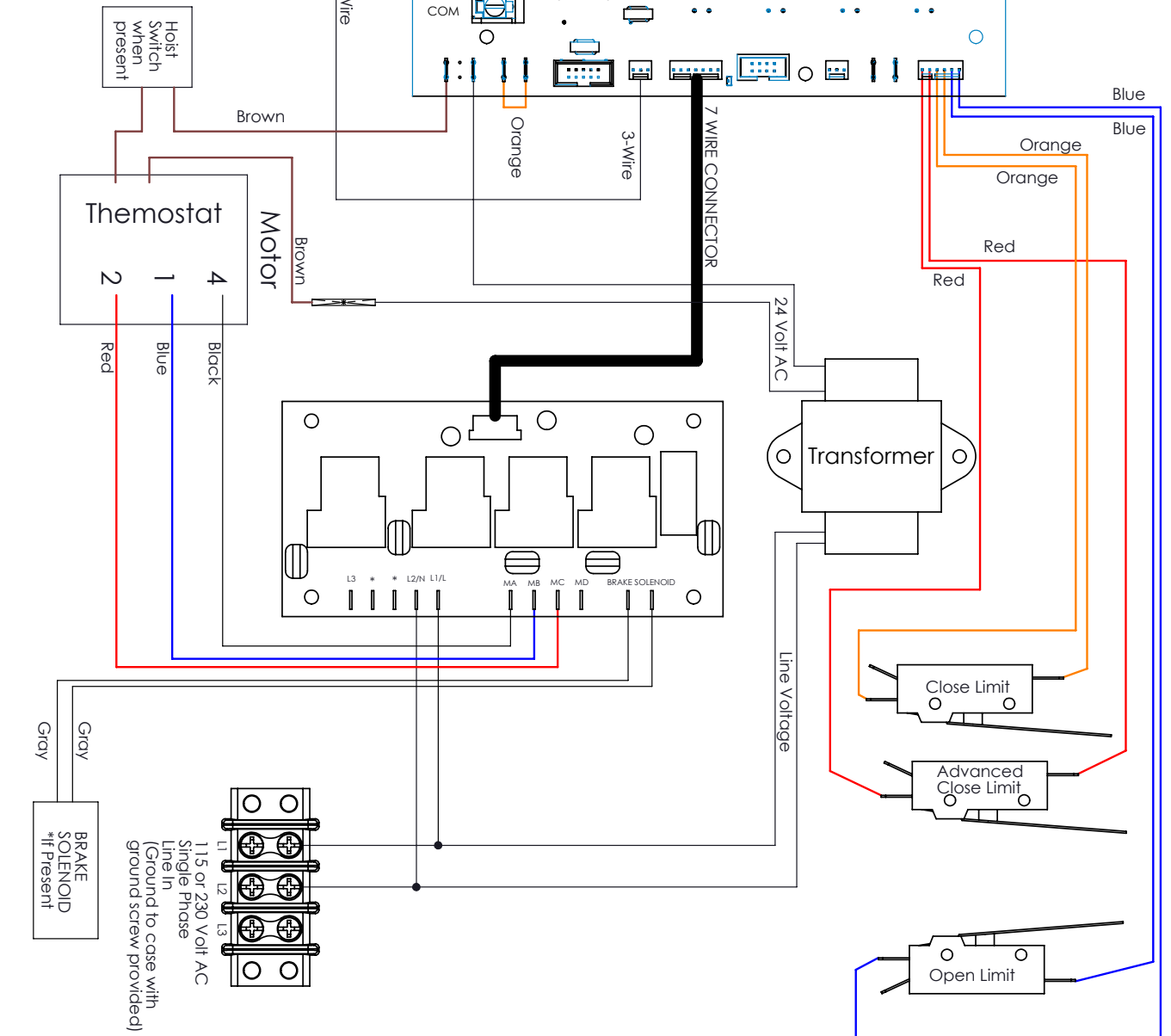
FIGURE 10

WIRING DIAGRAM

LX100, Brake
Single Phase w/
Instant Reversing
Motor

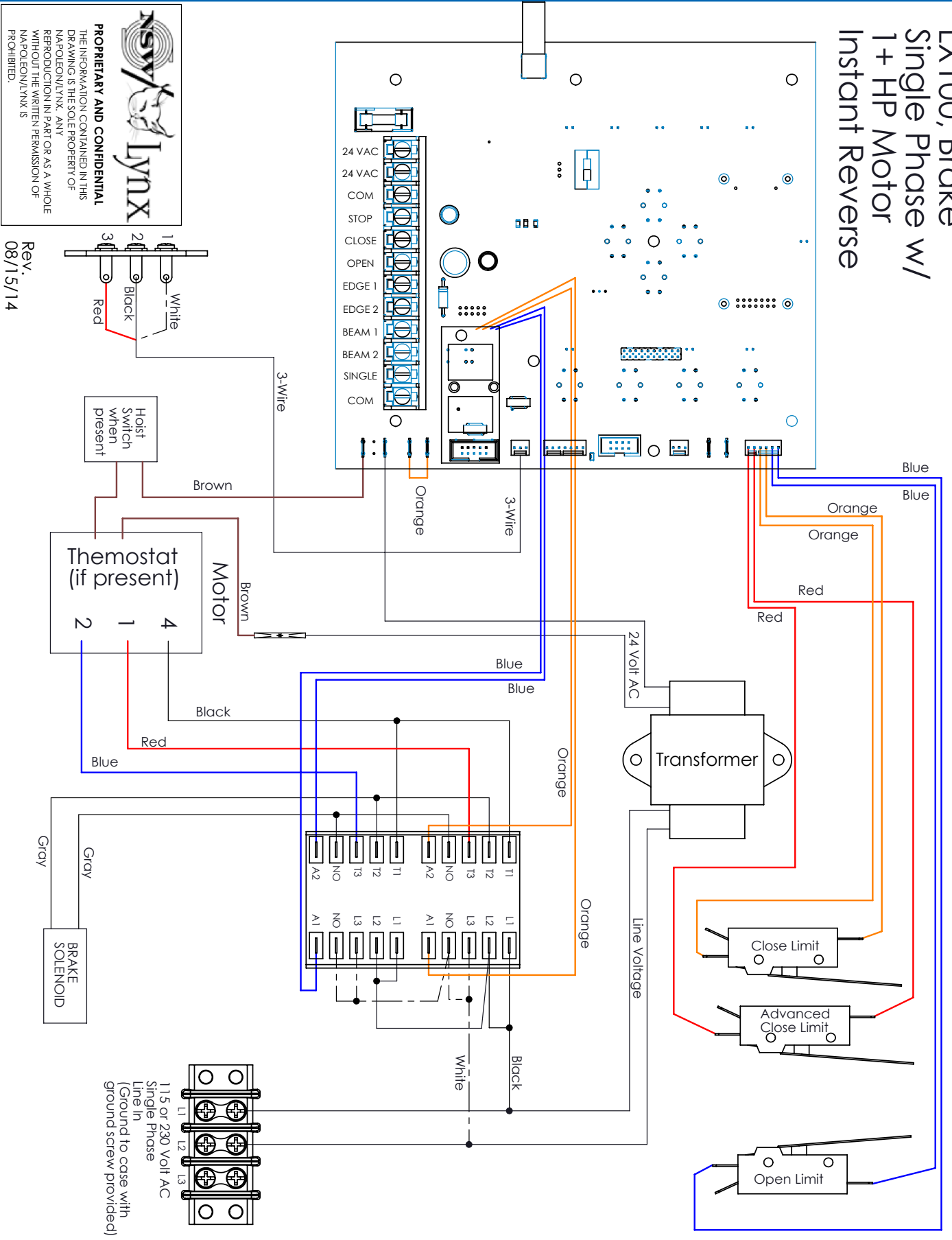
NSV/LYNX
PROPRIETARY AND CONFIDENTIAL
 THE INFORMATION CONTAINED IN THIS DRAWING IS THE SOLE PROPERTY OF NAPOLEON/LYNX. ANY REPRODUCTION IN PART OR AS A WHOLE WITHOUT THE WRITTEN PERMISSION OF NAPOLEON/LYNX IS PROHIBITED.

Rev. 03/09/15
 1 White
 2 Black
 3 Red

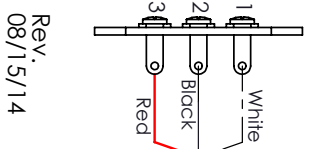


WIRING DIAGRAM

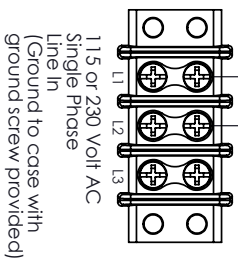
LX100, Brake
Single Phase w/
1+ HP Motor
Instant Reverse



NSV/ Lynx
PROPRIETARY AND CONFIDENTIAL
 THE INFORMATION CONTAINED IN THIS DRAWING IS THE SOLE PROPERTY OF NAPOLEON/LYNX. ANY REPRODUCTION IN PART OR AS A WHOLE WITHOUT THE WRITTEN PERMISSION OF NAPOLEON/LYNX IS PROHIBITED.



Rev.
08/15/14

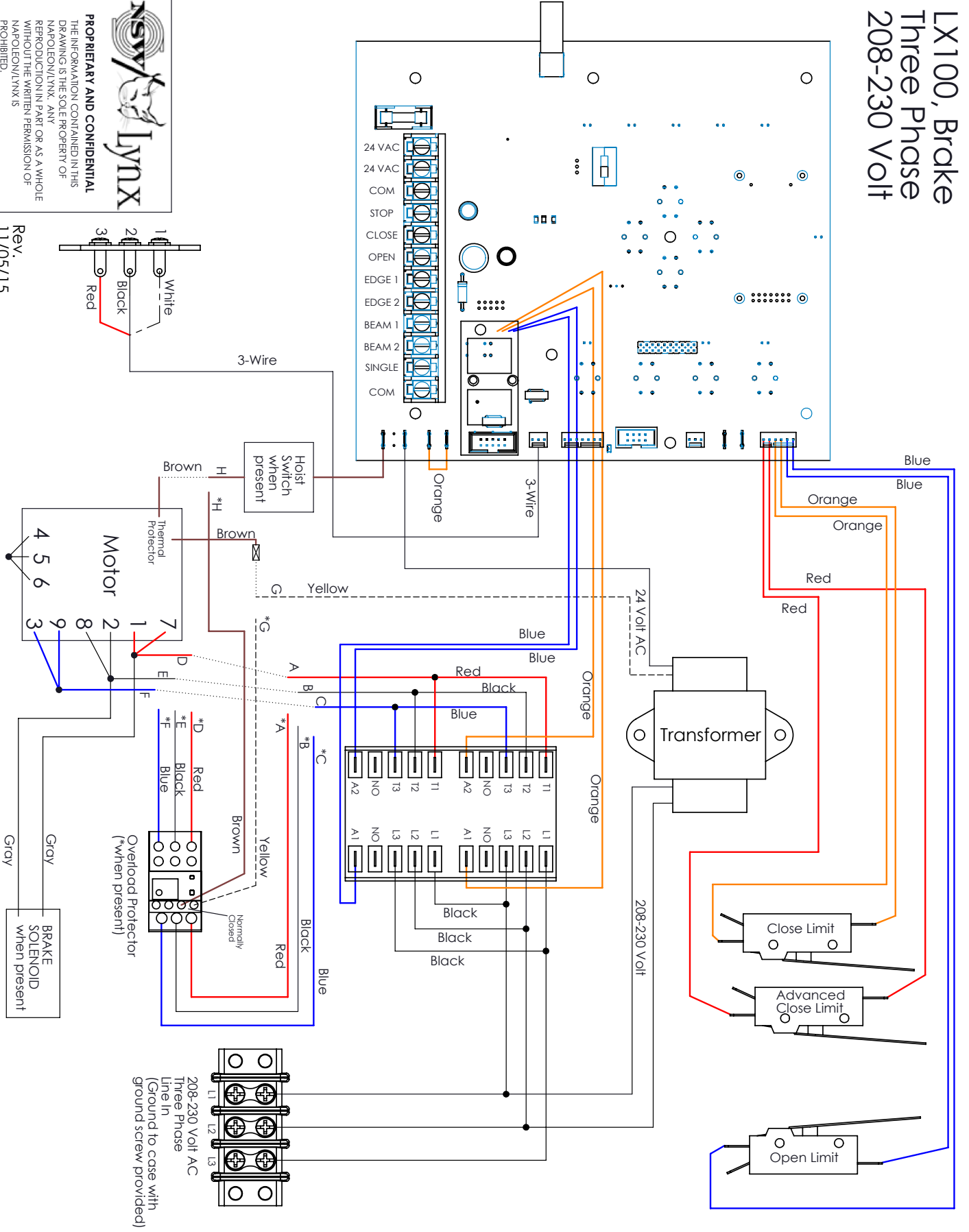


WIRING DIAGRAM

LX100, Brake
Three Phase
208-230 Volt

nsy/lynx
PROPRIETARY AND CONFIDENTIAL
 THE INFORMATION CONTAINED IN THIS DRAWING IS THE SOLE PROPERTY OF NAPOLEON/LYNX. ANY REPRODUCTION IN PART OR AS A WHOLE WITHOUT THE WRITTEN PERMISSION OF NAPOLEON/LYNX IS PROHIBITED.

Rev.
11/05/15

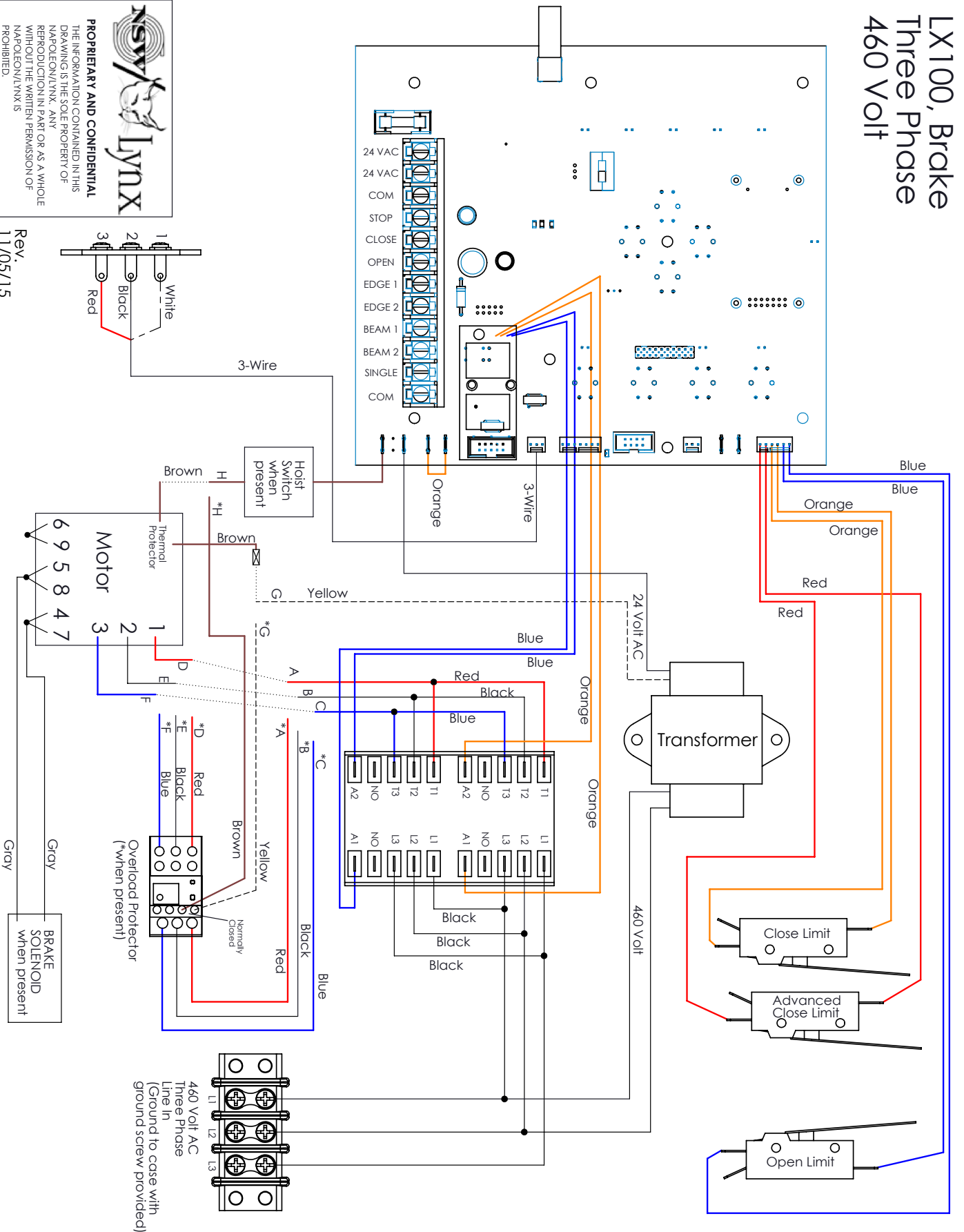


WIRING DIAGRAM

LX100, Brake
Three Phase
460 Volt

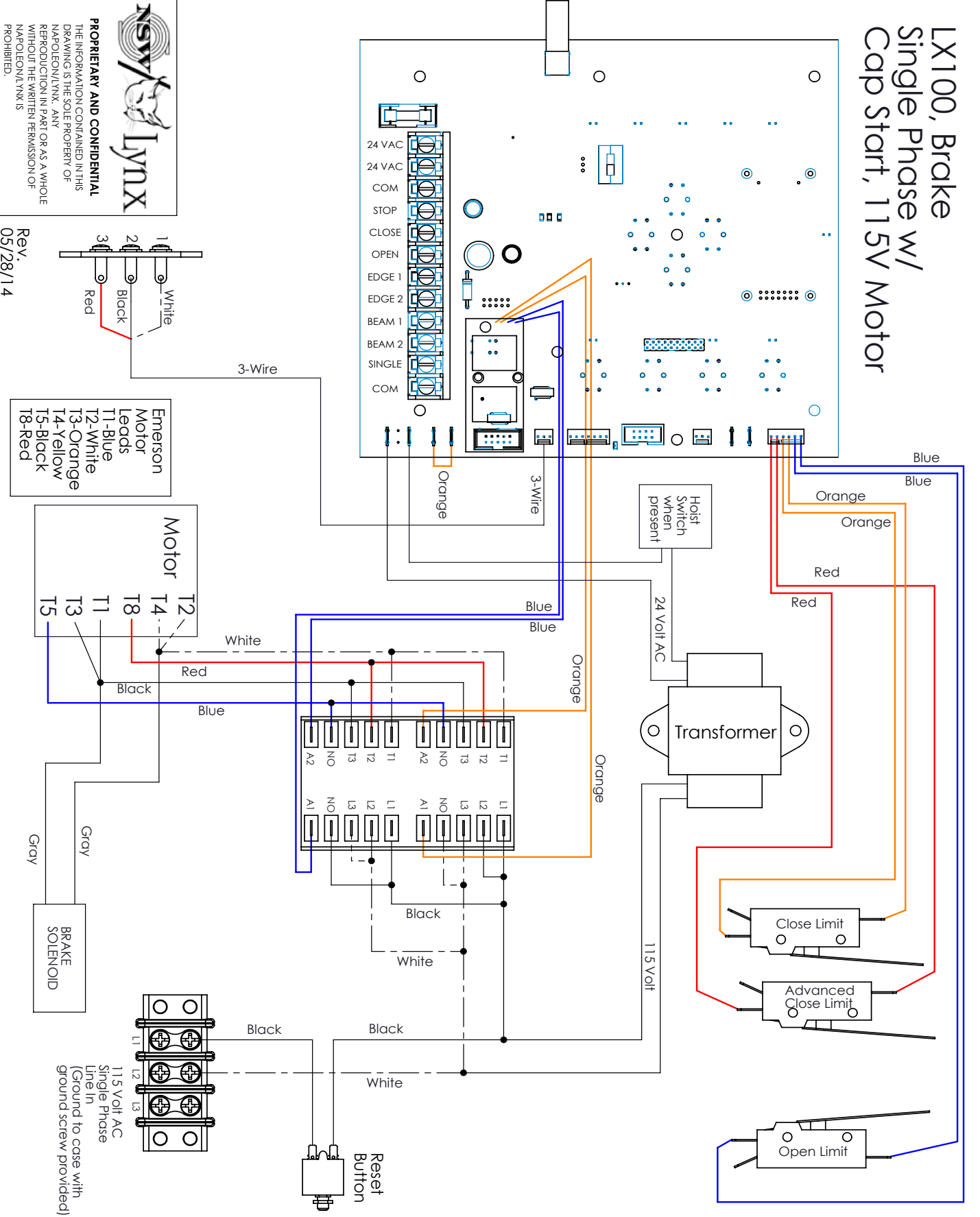
NSV/LYNX
PROPRIETARY AND CONFIDENTIAL
 THE INFORMATION CONTAINED IN THIS
 DRAWING IS THE SOLE PROPERTY OF
 NAPOLEON/LYNX. ANY
 REPRODUCTION IN PART OR AS A WHOLE
 WITHOUT THE WRITTEN PERMISSION OF
 NAPOLEON/LYNX IS
 PROHIBITED.

Rev.
11/05/15

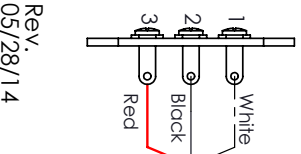


WIRING DIAGRAM

LX100, Brake
Single Phase w/
Cap Start, 115V Motor

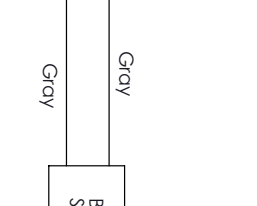
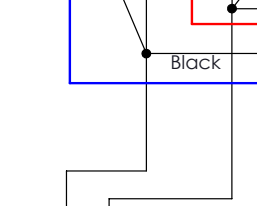


NSV/LYNX
PROPRIETARY AND CONFIDENTIAL
 THE INFORMATION CONTAINED IN THIS DRAWING IS THE SOLE PROPERTY OF NAPOLEON/LYNX. ANY REPRODUCTION IN PART OR AS A WHOLE WITHOUT THE WRITTEN PERMISSION OF NAPOLEON/LYNX IS PROHIBITED.



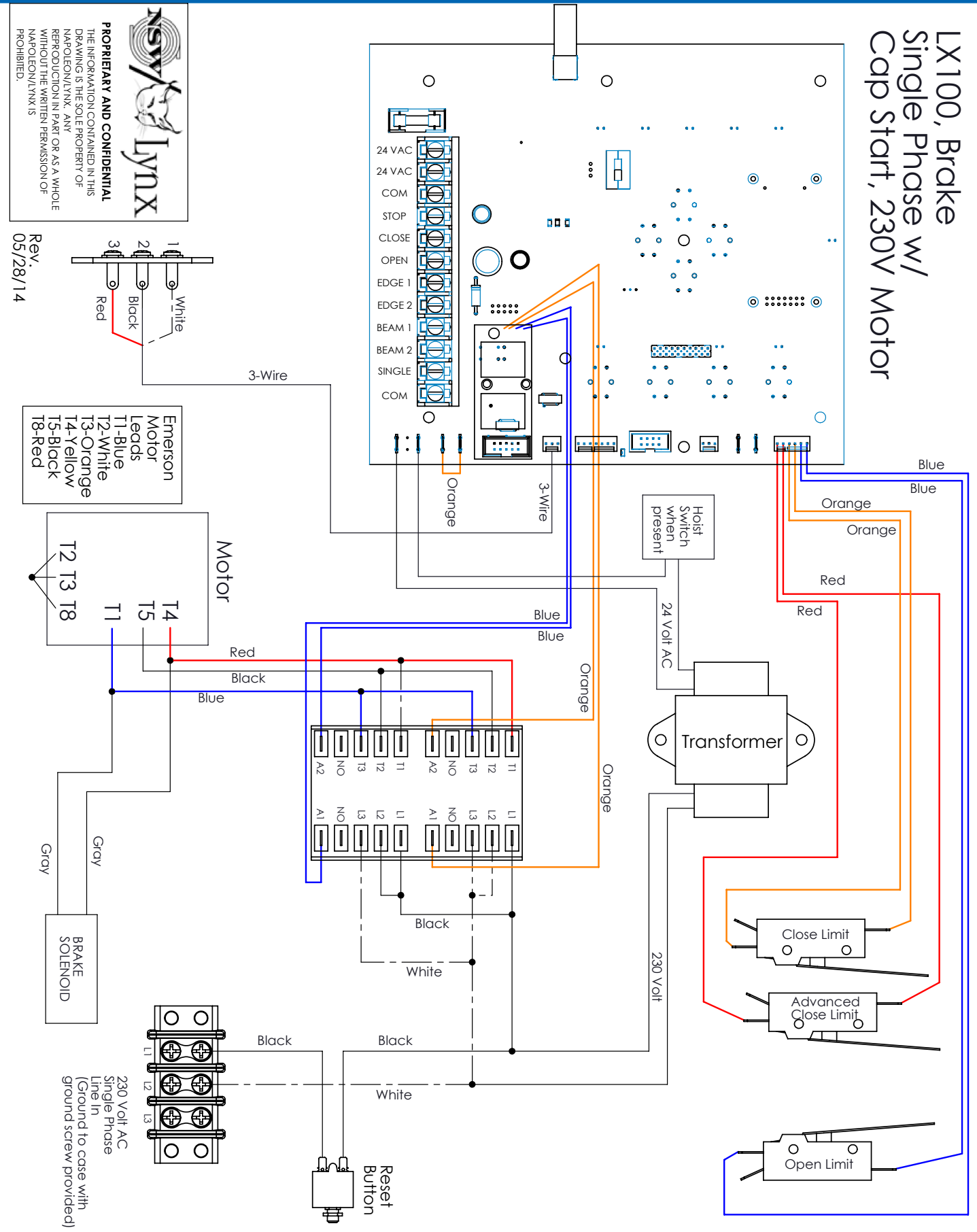
Rev. 05/28/14

Emerson Motor Leads
 T1-Blue
 T2-White
 T3-Orange
 T4-Yellow
 T5-Black
 18-Red



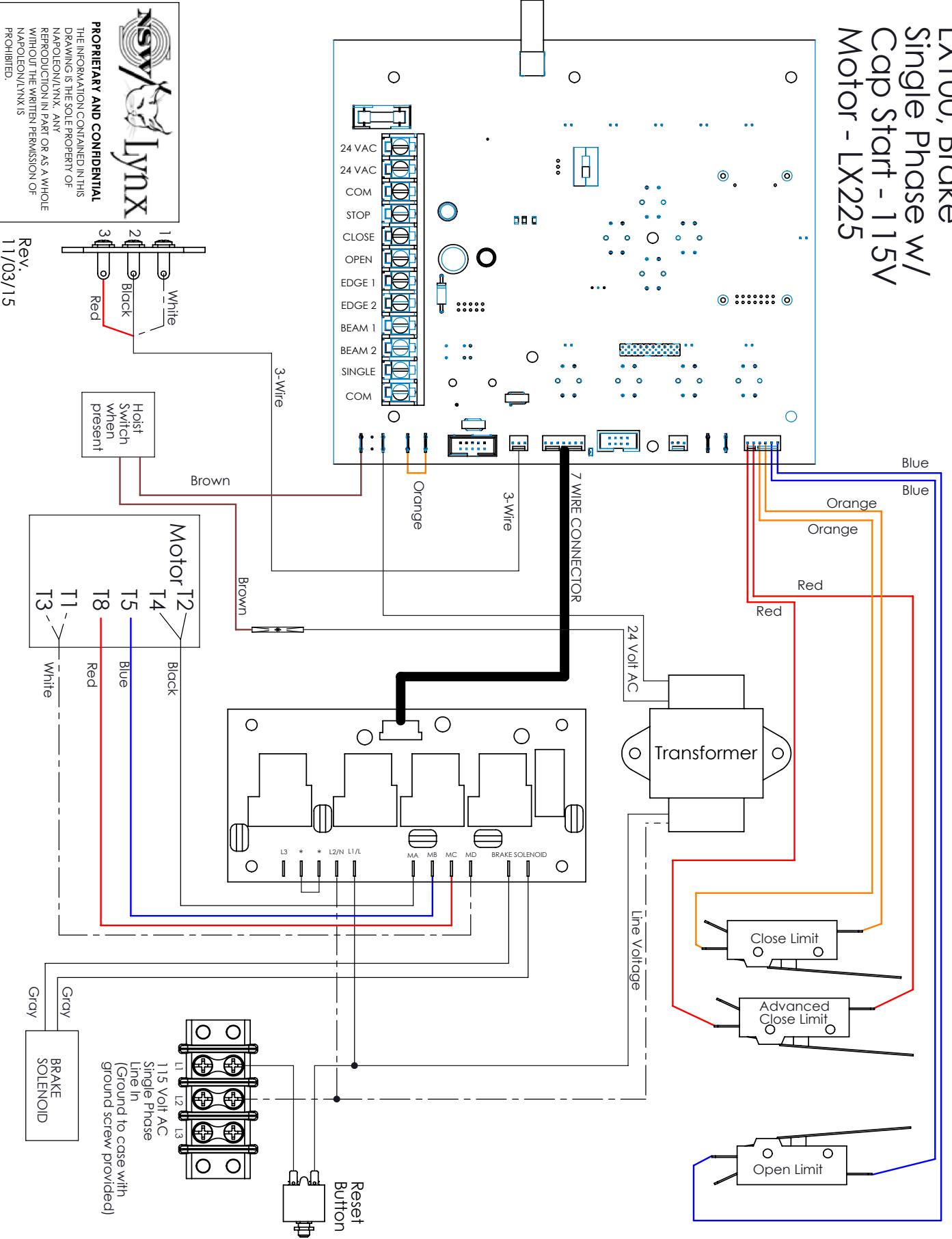
WIRING DIAGRAM

LX100, Brake
Single Phase w/
Cap Start, 230V Motor



WIRING DIAGRAM

LX100, Brake
Single Phase w/
Cap Start - 115V
Motor - LX225



NSV/ Lynx
PROPRIETARY AND CONFIDENTIAL
 THE INFORMATION CONTAINED IN THIS DRAWING IS THE SOLE PROPERTY OF NAPOLEON/LYNX. ANY REPRODUCTION IN PART OR AS A WHOLE WITHOUT THE WRITTEN PERMISSION OF NAPOLEON/LYNX IS PROHIBITED.

Rev. 11/03/15
 1 White
 2 Black
 3 Red

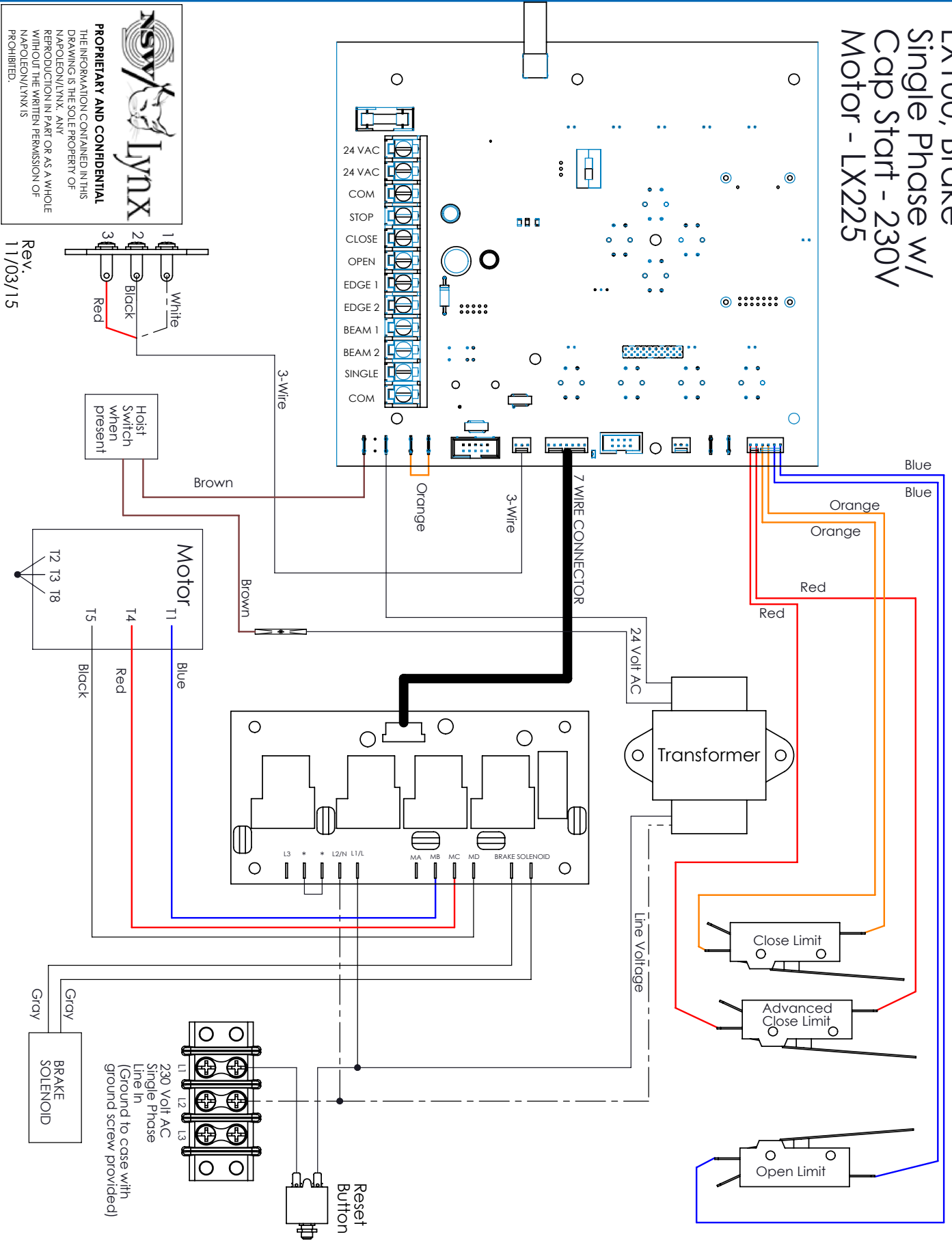
Hoist Switch when present
 Brown

Motor
 T2 Black
 T4 Blue
 T5 Red
 T1 White
 T3

115 Volt AC Single Phase Line In (Ground to case with ground screw provided)
 L1
 L2
 L3
 BRAKE SOLENOID
 Gray

WIRING DIAGRAM

LX100, Brake
Single Phase w/
Cap Start - 230V
Motor - LX225



SHOP DRAWING

