

FRAME ASSEMBLY
DRAWING #700025

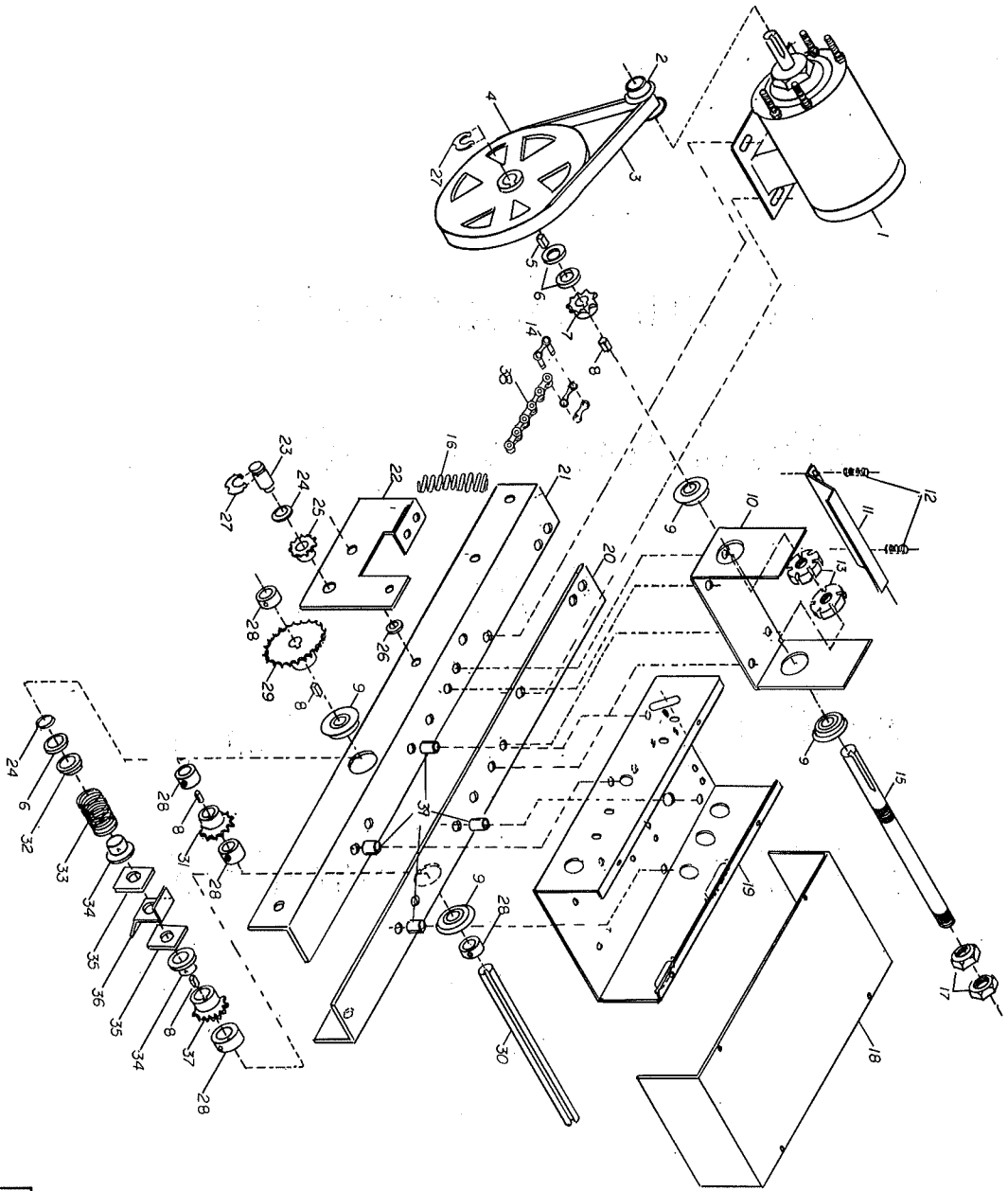
FOR

AMR-PC

ALDT

ATC3

AMRAT



NAPOLEON LYNX CO. PAT. N.L.
 MADE IN U.S.A.
 MODEL NO. AMR-4
 EXPLODED VIEW - 700025

NAPOLEON / LYNX

PARTS LIST DRAWING #700025 FRAME ASSEMBLY

MODEL AMR-PC - ATC3 - AMRA-T - ALDT

4/1/99

REF #	DESCRIPTION	POWER HEAD ASSEMBLY	QTY.	LIST PRICE
1	MTR #324P220	1/2 HP 115V 1500 R.P.M. FR 48Y (AMR - ALDT)	1	
1B	MTR #C48C22A72	1/2 HP 115/220V 1PH CAP START (ATC3)	1	
1C	MTR #C56A87A72	1/2 HP 115V 1PH (I R) A-O SMITH (OLD AMRAT)	1	
1D	MTR #102361	1/2 HP 115V 1PH (I R) LEESON (AMRAT)	1	
1E	MTR #327P673	3/4 HP 115/230V IPH CAP START (ATC3)	1	
1F	MTR #P56A40A72P	1/2 HP 208/220/440V 3PH, (OLD#327P676)	1	
1G	MTR #P56A42A72	3/4 HP 208/220/440V 3PH, (OLD #327P678)	1	
	UNIFRAME, ONE PIECE ASSEMBLY,(CONSISTS OF FOLLOWING OLD PARTS)		1	
[10]	U BRACKET			
[20]	FRAME ANGLE, 2" X " X 24" LG. (RIGHT)			
[21]	FRAME ANGLE, 2" X " X 24" LG. (LEFT)			
2	MOTOR PULLEY 1 1/2" O.D. X 1/2" BORE		1	
2A	MOTOR PULLEY 1 1/2" O.D. X 5/8" BORE 3/16" KW 2 S.S.		1	
3	V BELT, 4L300		1	
4	DRIVE PULLEY 8" O.D. X 5/8" BORE 3/16" KW		1	
5	KEY STOCK, 3/16" X 3/16" X 7/8" LG.		1	
6	FLAT WASHER, 1" O.D. X 5/8" I.D. X 1/8" THK.		2	
7	SPROCKET, 48B9 X 5/8" BORE 3/16" KW. (STEEL)		1	
8	KEY STOCK, 3/16" X 3/16" X 1/2" LG.		3	
9	BEARING, BALL FLANGED 1 3/8" O.D. X 5/8" I.D.		4	
	H.D. ROMANIAN BEARING, 5/8" I.D. (USED ON AMRAITBC)		2	
11	RETAINING PLATE (TRAVELING NUT)		1	
12	SPRING, RETAINING PLATE		2	
13	TRAVELLING NUTS, 5/8 - 24		2	
14	CONNECTING LINK, #65		1	
15	LIMIT SHAFT, 5/8" O.D. X 10 1/2" LG.		1	
16	SPRING, OVERLOAD 1/4" X 2 3/4" LG.		1	
17	HEX JAM NUT 5/8 - 24 THREAD		2	
18	COVER, ELECTRICAL BOX (NOTE: AMR-PC WITH HOLE)		1	
19	ELECTRICAL BOX		1	
22	OVERLOAD PLATE, COMMERCIAL		1	
23	STUD 5/8" X 1 1/8" LG.		1	
24	FLAT WASHER, STEEL 5/8" I.D. X 13/16" O.D. X .062 THK. (SPECIAL)		1	
25	SPROCKET, 65B9 X 5/8" BORE P. M. (IDLER)		1	
26	FLAT WASHER, STEEL 3/16" USS		1	
27	RETAINING RING		2	
28	SHAFT COLLAR, STEEL 5/8" I.D.		4	
29	SPROCKET, 48B21 X 5/8" BORE 3/16" KW.		1	
30	DRIVE SHAFT, 5/8" O.D. X 10 3/8" LG. 3/16" KW.		1	
	AMR REVERSE MOUNT DRIVE SHAFT		1	
31	SPROCKET, DRIVE 48B10 X 5/8" BORE 3/16" KW. (STEEL)		1	
38	CHAIN, #65 X 18" LG. (LIMIT)		1	
39	SPACER, 1/4" I.D. X 1/2" O.D. X 9/16" LG. (NYLON)		4	
	OVERLOAD PLATE ASSEMBLY		1	