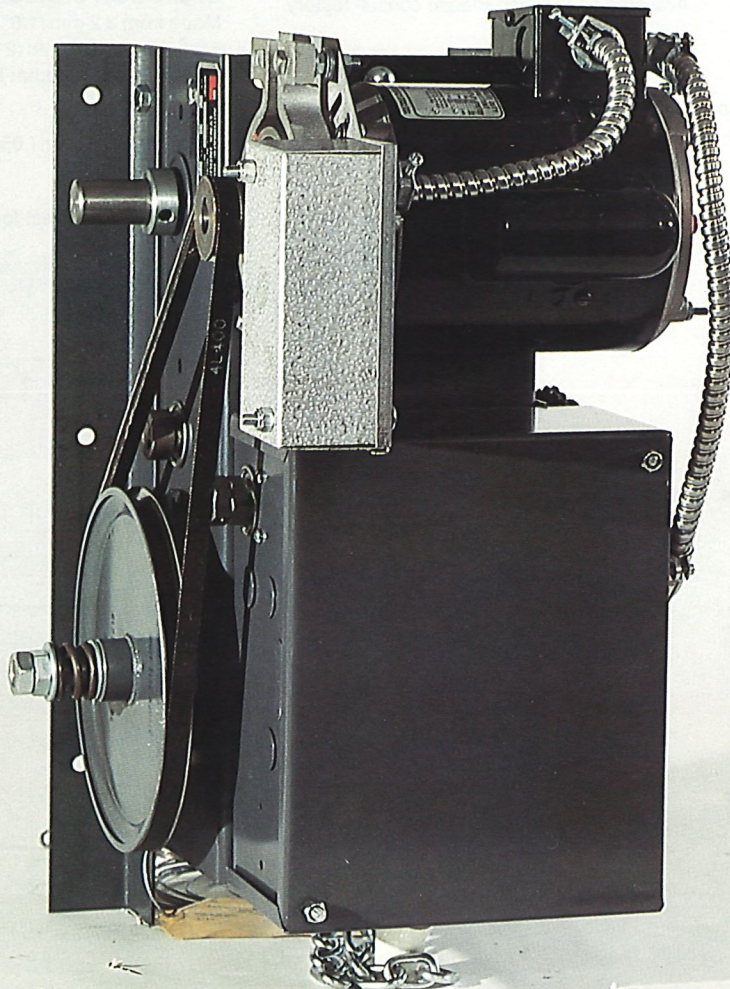


**MODEL AMCJH
JACKSHAFT TYPE COMMERCIAL-INDUSTRIAL OPERATOR**





MODEL AMCJH JACKSHAFT TYPE COMMERCIAL-INDUSTRIAL OPERATOR

GENERAL INFORMATION

MOTOR

1/3, 1/2 or 3/4 H.P., 115 – 230 volts, 1 phase, capacitor start.

1/2, 3/4 or 1 H.P., 230 – 460 or 575 volts, 3 phase.

All with overload and undervoltage protection.

BUTTON CONTROL

Door may be stopped in any position and moved up or down with three button control.

LIMIT SWITCHES

Oil impregnated screw type cams and precision type micro switches for both up and down positions. They are easily adjusted without tools.

ADJUSTABLE FRICTION CLUTCH

Provides safety to operator and door throughout opening and closing cycles and is easily adjusted in field.

DRIVE

Belt and #41 chain for efficient long lasting quiet operation. Power transfer is made with #41 chain.

SOLENOID BRAKE

Prevents door from coasting and to help secure door in closed position.

DISCONNECT DEVICE

Equipped with a chain hoist for manual operation in case of power failure.

MAXIMUM SUGGESTED DOOR HEIGHT

6 m (20'-0").

SIDEROOM AND MOUNTING

38 cm (15") right or left.

OPTIONAL

CHAIN HOIST

Available without on Model AMCJ.

TRACK ASSEMBLY

Available with auxiliary trolley type track assembly.

WATER PROOF

Available on request. Please consult factory.

SPECIFICATIONS

BUTTON CONTROL

Three. Standard "open-close-stop", momentary contact type 24 volts (or constant pressure).

RELAY

Heavy duty Struthers-Dunn reversing contactor or equal.

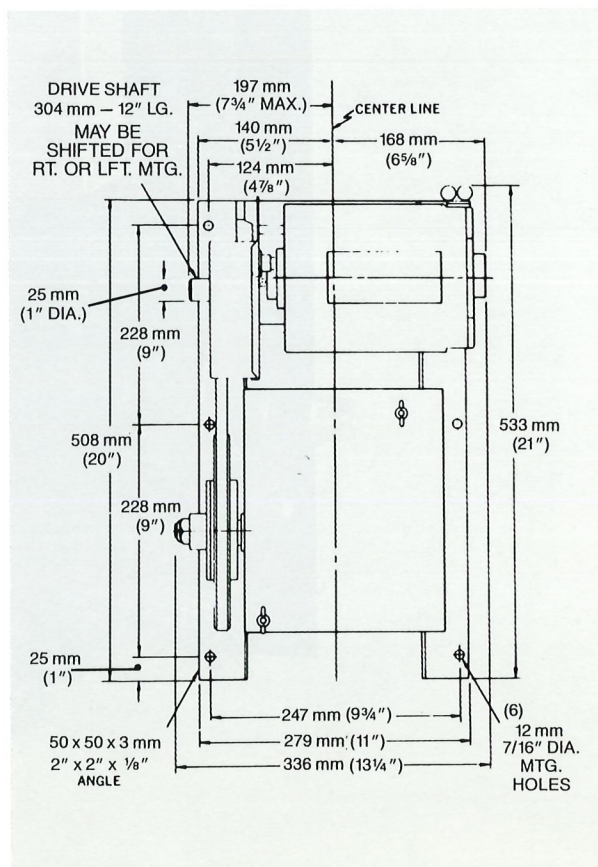
OPERATOR CHASSIS

Made from 3.2 mm (1/8") steel mounted on 5 cm x 5 cm x 3.2 mm (2" x 2" x 1/8") steel angles, bolted together for greater strength.

CONTROL BOX

Made from 1.27 mm (.050") steel with removable cover.

Specifications subject to change without notice.



Napoleon/Lynx

Napoleon Spring Works Inc.

A Lynx Company

NEW JERSEY:
166 Gould Ave.
Paterson, New Jersey
07503
Tel.: 201-278-5588
Toll free: 800-234-5969
Fax: 201-742-9832

PHOENIX:
101 North 57th Ave.
Phoenix, Arizona
85043
Tel.: 602-352-1010
Toll free: 800-233-3599
Fax: 602-352-1341

OHIO:
P.O. Box 160
Route 66 South
Archbold, Ohio 43502
Tel.: 419-455-1010
Toll free: 800-338-5399
Fax: 419-446-2616

LOS ANGELES:
15801 Stagg Street
Van Nuys, California
91406
Tel.: 818-908-9935
Toll free: 800-369-6351
Fax: 818-908-1151

MONTREAL:
175 ave. Upper Edison
St-Lambert, Quebec
J4R 2R3
Tel.: 514-866-1068
Fax: 514-466-8852

TORONTO:
1040 Meyerside Drive
Mississauga, Ontario
L5T 1J4
Tel.: 416-674-4606
Fax: 416-670-0806

MODEL AMCJ AND AMCJ-H

JACKSHAFT TYPE COMMERCIAL - INDUSTRIAL OPERATOR

Jackshaft type opener for use on commercial and industrial sectional doors with high lift or vertical lift, rolling steel doors and grills. Shipping weight approx. 95 Lbs.

CONTROL WIRING

B-2 WIRING - 8 POLE TERMINAL STRIP - pre-wired for 3 button 24 volt momentary contact control; single button station; key switch; all auxiliary safety devices to reverse door when closing.

RADIO CONTROL - pre-wired for 3 terminal radio control - 24 volt

FEATURES

Shaft speed - 72 R. P. M.

*Universal side mount converts quickly to right or left side mount
floor level disconnect*

Clutch - Fully adjustable friction type

Solenoid brake - heavy duty self adjusting type

Shaft spreader bar - maintains drive chain tension

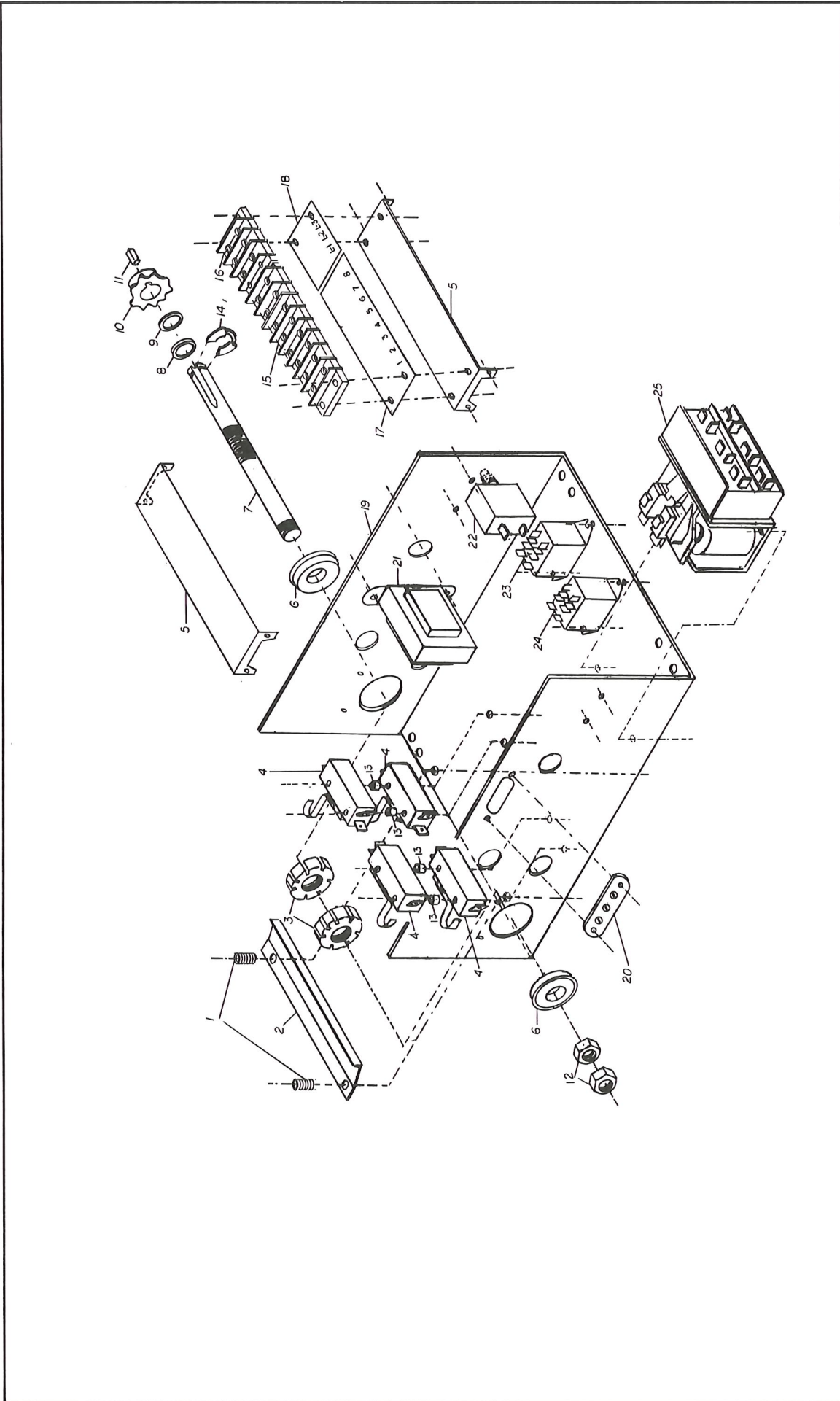
Chain hoist built-in - specify model AMCJ-H

MODEL	H.P.	VOLTAGE PHASE	MAXIMUM HEIGHT	MAXIMUM WEIGHT	LIST PRICE
AMCJ-211	1/2	115/1	20'	650	
AMCJ-221	1/2	230/1	20'	650	
AMCJ-223	1/2	230/3	20'	650	
AMCJ-241	1/2	440/3	20'	650	
AMCJ-411	3/4	115/1	20'	725	
AMCJ-421	3/4	230/1	20'	725	
AMCJ-423	3/4	230/3	20'	725	
AMCJ-443	3/4	440/3	20'	725	

MODIFICATIONS

OPTION	LIST
Chain hoist for manual operation	\$100.00
#50 chain & sprockets for S.R.D. 1" & 1 1/4" Shaft	\$50.00

See accessories page for applicable modifications



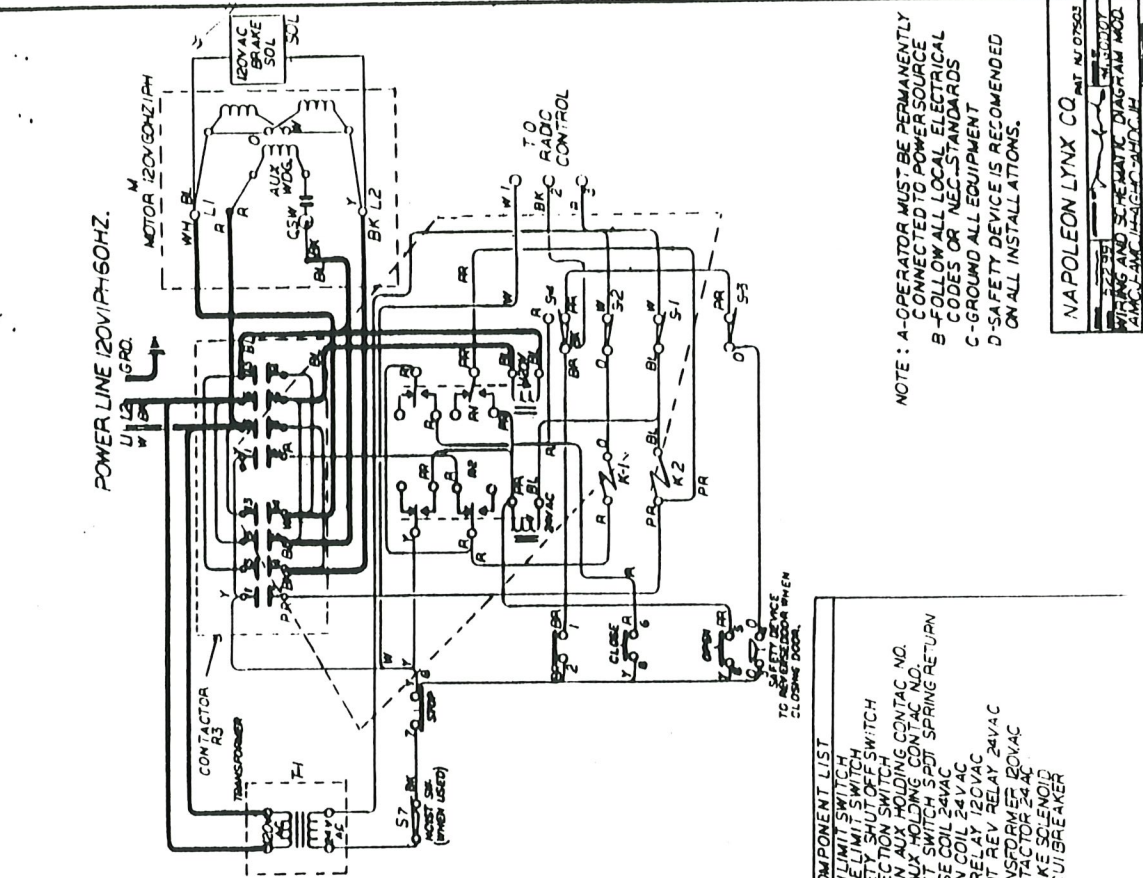
NAPOLEON LYNX CO. PAT. N.J.
 9 22 89 7:30 H. W. GIDDY
 MODELS MCGRAW-HILL PAT. DES. DIV.
 PROJ. 22011PH ENCLOSURE ASSY.
 EXPLODED VIEW. 700034

NAPOLEON / LYNX

**PARTS LIST DRAWING #700034 ELECTRICAL BOX
MODEL ALDJ/B/H - AMCJ/H - AHDCJ - AHGO - AGHO**

4/1/99

REF#	DESCRIPTION	QTY.	LIST PRICE
1	SPRING, TRAVELING NUT RETAINER 1/4" X 1/2"LG	2	
2	TRAVELING NUT RETAINER PLATE	1	
3	TRAVELING NUT, 5/8-24 THREAD	2	
4	SWITCH, LIMIT (E13-80H)	4	
5	TERMINAL STRIP SUPPORT BRACKET	1	
6	FLANGED BALL BEARING, 5/8"ID X 1 3/8"OD	2	
7	LIMIT SHAFT, 5/8"OD X 10 1/2"LG	1	
8	WASHER SPACER, 5/8"ID X 1"OD X 1/8"THK (SPECIAL)	1	
9	WASHER SPACER, 5/8"ID X 13/16"OD X 1/16"THK (SPECIAL)	1	
10	SPROCKET, 48B9 X 5/8"BORE, 3/16"KW (STEEL)	1	
11	KEY STOCK, 3/16"SQ X 1/2"LG	1	
12	HEX JAM NUT, 5/8-24	2	
13	SPACER, OVERLOAD 1/4" X 1/4" (NYLON)	4	
14	RETAINING RING	1	
15	TERMINAL BLOCK, 8 POLE L.V (78008) (AMCJ/H-AHDCJ-AGHO)	1	
15A	TERMINAL BLOCK, 8 POLE L.V (76008) (ALDJ/H)	1	
16	TERMINAL BLOCK, 3 POLE, HIGH VOLTAGE, (21003)	1	
17	FIBER MARKER, 8 POLE, LOW VOLTAGE, (VF18008-001)(AMCJH)	1	
17A	FIBER MARKER, 8 POLE, LOW VOLTAGE, VF14008-10 (ALDJ/H)	1	
18	FIBER MARKER, 3 POLE HIGH VOLTAGE, (VF2109-0303)	1	
19	COVER, ELECTRICAL BOX	1	
20	TERMINAL STRIP, 3 POLE (LY040488)	1	
21	TRANSFORMER, 120-24V/40VA	1	
21A	TRANSFORMER, 240-24V/40VA	1	
21B	TRANSFORMER, 460/24V - 40VA	1	
22	CIRCUIT BREAKERS, 115V (8,10,12,15,20 AMPS)	1	
22A	CIRCUIT BREAKERS, 115V (5,7 AMPS)	1	
23	RELAY, DPDT 24 V FRL-263A024/02CK-OE	1	
24	RELAY, DPDT 120 V FRL-263A120/02CK-OE	1	
24A	RELAY, DPDT 240 V	1	
24B	RELAY, 3PDT 24 V (OMRON) (USED ON ALDJB)	1	
	CONTACTOR, REVERSING 24V TELEMECANIQUE, P.N. LC2D09	1	
	CONTACTOR, 24V (REPLACEMENT MSD P.N. 275KXX178)	1	
	CONTACTOR, 24V 4 SWITCH (REPLACEMENT MSD PN. 275KXX91)	1	
	CONTACTOR, A275KXX178 - 24V COILS (2 SWITCHES)	1	
	CONTACTOR, A275KXX91 - 24V COILS (4 SWITCHES)	1	
	FOR AHGO ADD:		
	TIMER, DIGITAL SINGLE SHOT (TO CLOSE) (THCU1023E)	1	
*	NOT USED ON ALDJ SERIES		

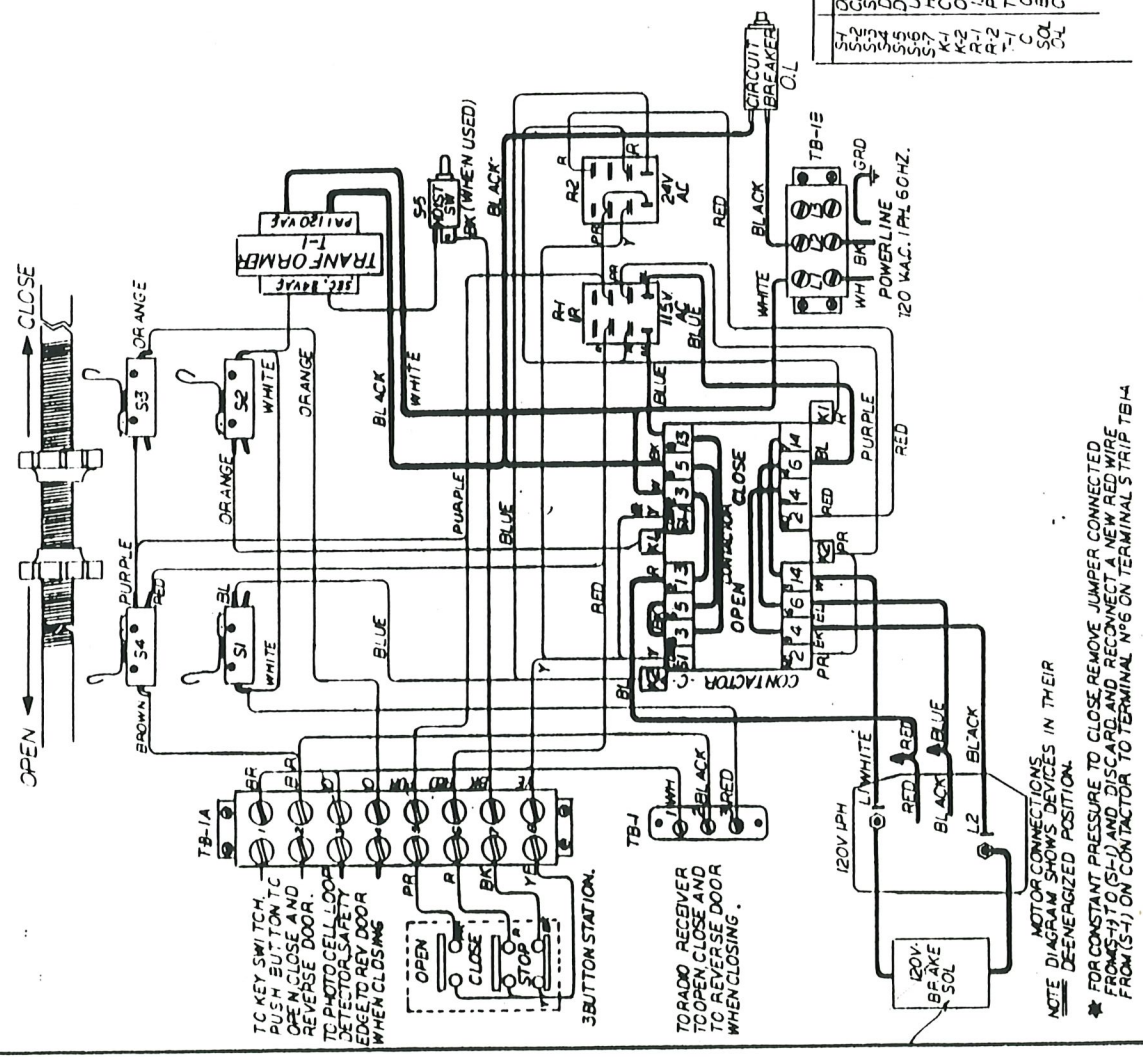


NOTE: A-OPERATOR MUST BE PERMANENTLY CONNECTED TO POWER SOURCE
 B-FOLLOW ALL LOCAL ELECTRICAL CODES OR NEC STANDARDS
 C-GROUND ALL EQUIPMENT ON ALL INSTALLATIONS.
 D- SAFETY DEVICE IS RECOMMENDED

NAPOLEON LYNX CO. PAT. N.07563
 WIRING AND SCHEMATIC DIAGRAM MOD. 2002
 120VAC

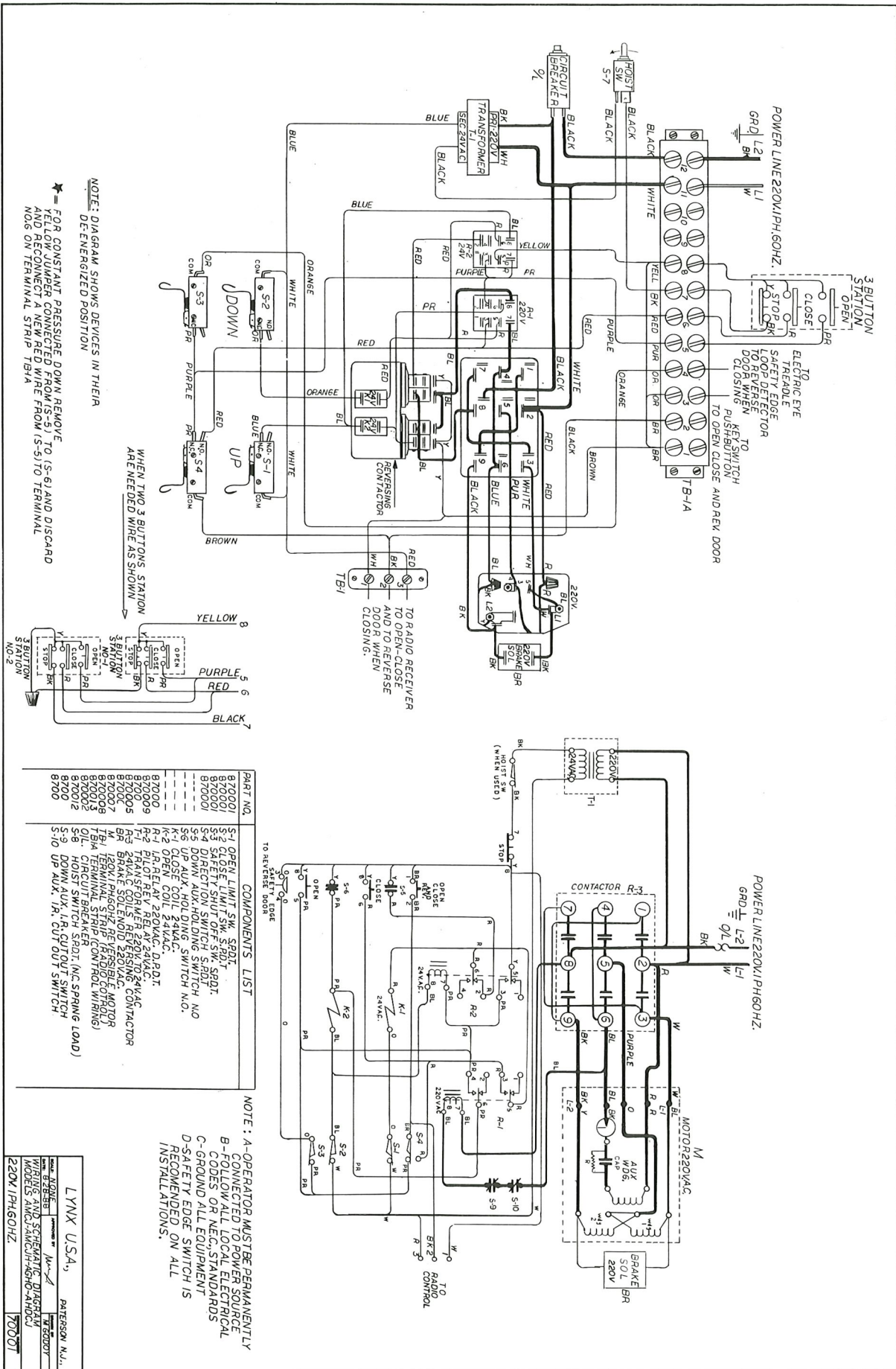
COMPONENT LIST

- S1 OPEN LIMIT SWITCH
- S2 CLOSE LIMIT SWITCH
- S3 SAFETY SHUTOFF SWITCH
- S4 DIRECTION SWITCH
- S5 DOWN AUX HOLDING CONTACT NO.
- S6 UP AUX HOLDING CONTACT NO.
- S7 HOIST SWITCH S.P.D.T. SPRING RETURN
- K1 CLOSE COIL 24VAC
- K2 OPEN COIL 24VAC
- R-1 R. RELAY 120VAC
- R-2 PILOT RELY RELAY 24VAC
- T-1 TRANSFORMER 120VAC
- C CONTACTOR 24VAC
- SOL BRAKE SOLENOID
- OL CIRCUIT BREAKER



NOTE: MOTOR CONNECTIONS DEENERGIZED POSITION.

FOR CONSTANT PRESSURE TO CLOSE REMOVE JUMPER CONNECTED FROM(S-1) TO(S-1) AND DISCARD AND RECONNECT A NEW RED WIRE FROM(S-1) ON CONTACTOR TO TERMINAL N°6 ON TERMINAL STRIP TB-1A



NOTE: DIAGRAM SHOWS DEVICES IN THEIR DEENERGIZED POSITION

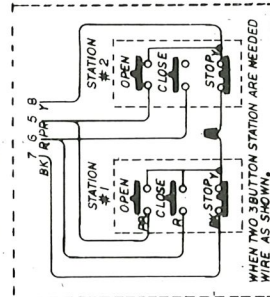
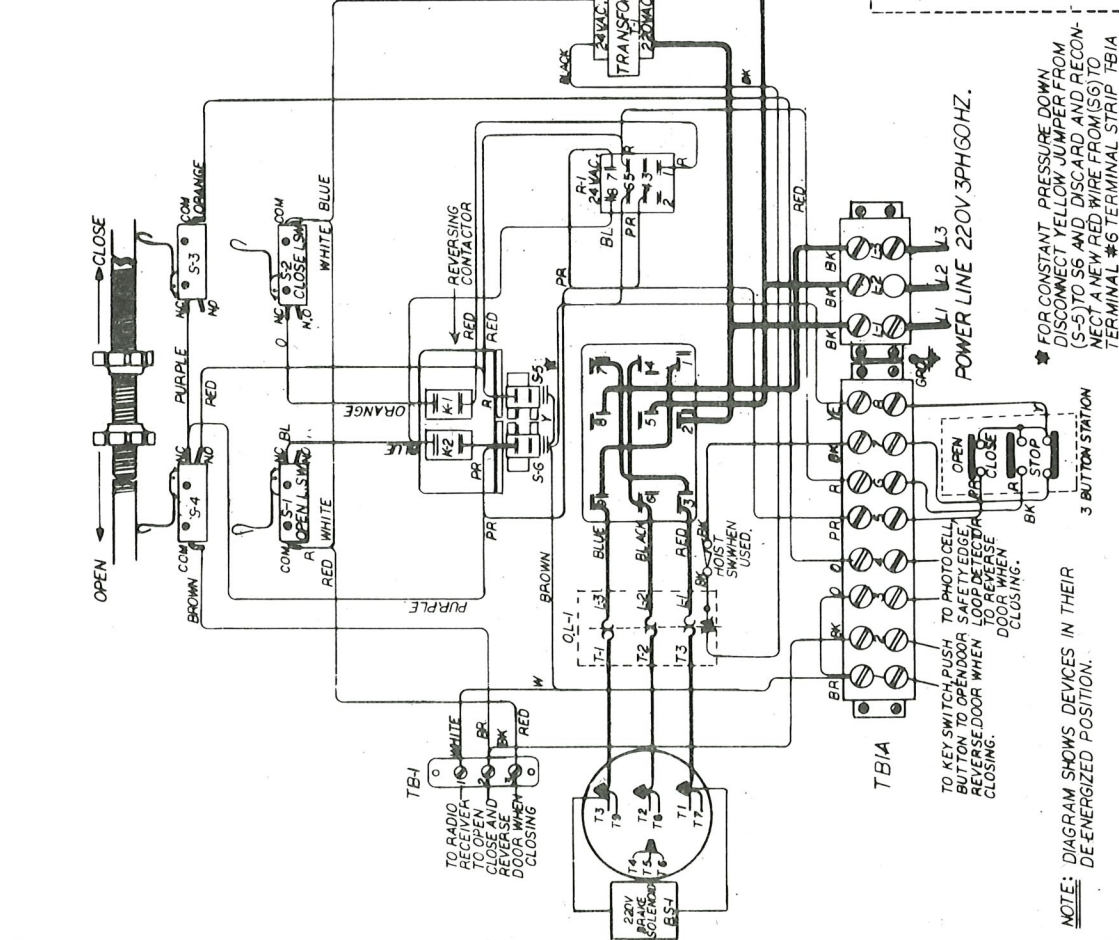
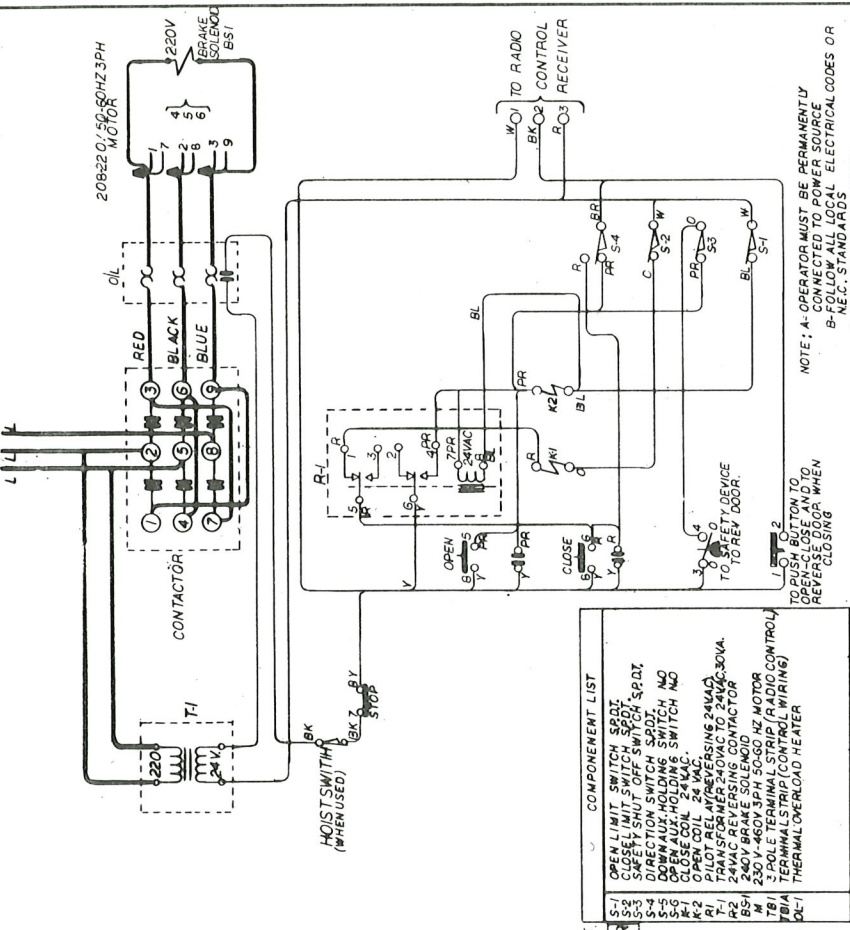
* FOR CONSTANT PRESSURE DOWN REMOVE FEEDBACK CONTACT FROM REVERSE AND RECONNECT A NEW RED WIRE FROM (S-5) TO TERMINAL NO. ON TERMINAL STRIP TB1A

PART NO.	COMPONENTS LIST
870001	OPEN LIMIT SW. S.P.D.T.
870002	CLOSE LIMIT SW. S.P.D.T.
870003	STOP SWITCH S.P.D.T.
870004	DIRECTION SWITCH S.P.D.T. NO.
870005	UP DOWN AUX. HOLDING SWITCH N.O.
870006	UP DOWN AUX. HOLDING SWITCH N.O.
870007	CLOSE COIL 24VAC.
870008	RELAY 220VAC. D.P.D.T.
870009	TRANSFORMER 220V TO 24VAC.
870010	PILOT REV RELAY 24VAC.
870011	BRAKE SOLENOID 220VAC. CONTACTOR
870012	120V 1PH60HZ REVERSIBLE MOTOR
870013	TERMINAL STRIP (RADIO CONTROL)
870014	TERMINAL STRIP (RADIO CONTROL)
870015	HOIST SWITCH S.P.D.T. (N.C. SPRING LOAD)
870016	UP DOWN AUX. I.R. CUT OUT SWITCH
870017	DOWN AUX. I.R. CUT OUT SWITCH

NOTE: A- OPERATOR MUST BE PERMANENTLY CONNECTED TO POWER SOURCE
 B- FOLLOW ALL LOCAL ELECTRICAL CODES OR N.E.C. STANDARDS
 C- GROUND ALL EQUIPMENT
 D- SAFETY EDGE SWITCH IS RECOMMENDED ON ALL INSTALLATIONS.

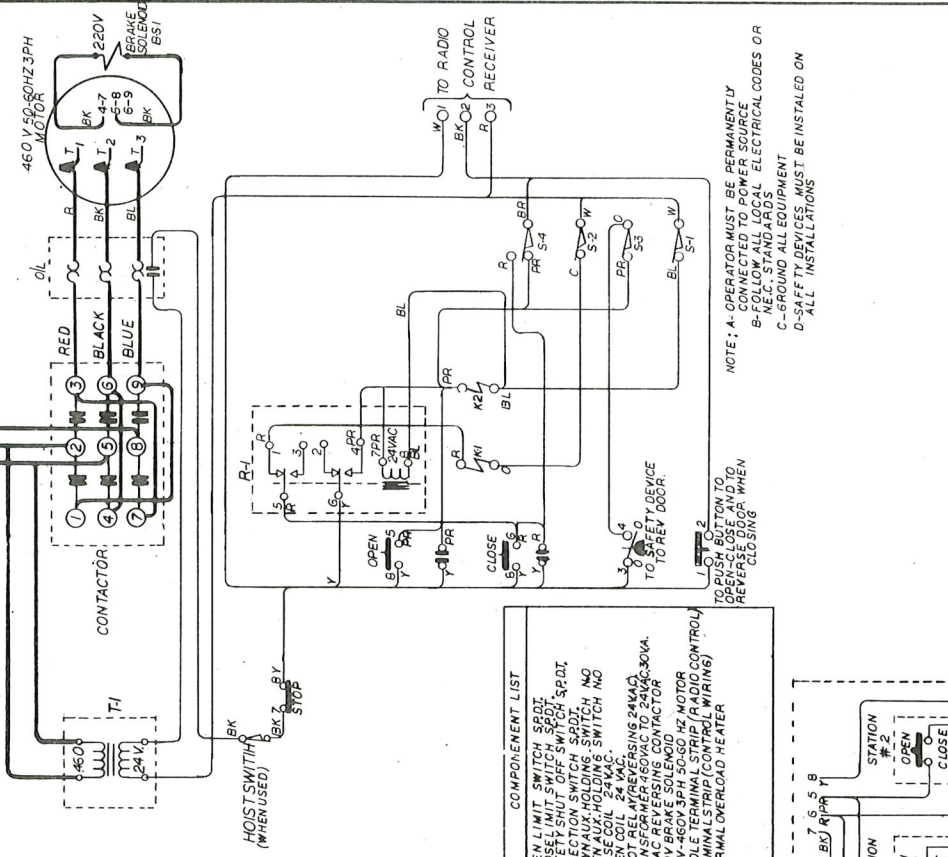
LYNX USA, PATERSON N.J.
 MODEL NO. 870001
 PART NO. 870001
 220V 1PH60HZ 70001

POWER LINE 220V 3PH 60HZ.



NAPOLEON LYNX CO. PAT. NL
 3 29 57
 WIRING AND SCHEMATIC DIAGRAM
 208-220V 3PH MODELS AMCU-AMCUH
 AHDCJ-AHGO-AGHO. 700120

POWER LINE 460V 3PH 60HZ.



NAPOLEON LYNX CO. PAT. N.L.	
DATE	REV.
2-29-7	W. BODDY
WIRING AND SCHEMATIC DIAGRAM	
4 BCV3PH MODELS AMCU-AMCUH	
AHDCJ-AHGO-AGHO.	
700121	

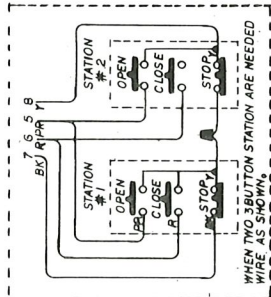
NOTE: A- OPERATOR MUST BE PERMANENTLY CONNECTED TO POWER SOURCE
 B- FOLLOW ALL LOCAL ELECTRICAL CODES OR N.E.C. STANDARDS
 C- GROUND ALL EQUIPMENT
 D- SAFETY DEVICES MUST BE INSTALLED ON ALL INSTALLATIONS

TO PUSH BUTTON TO REVERSE DOOR WHEN CLOSING

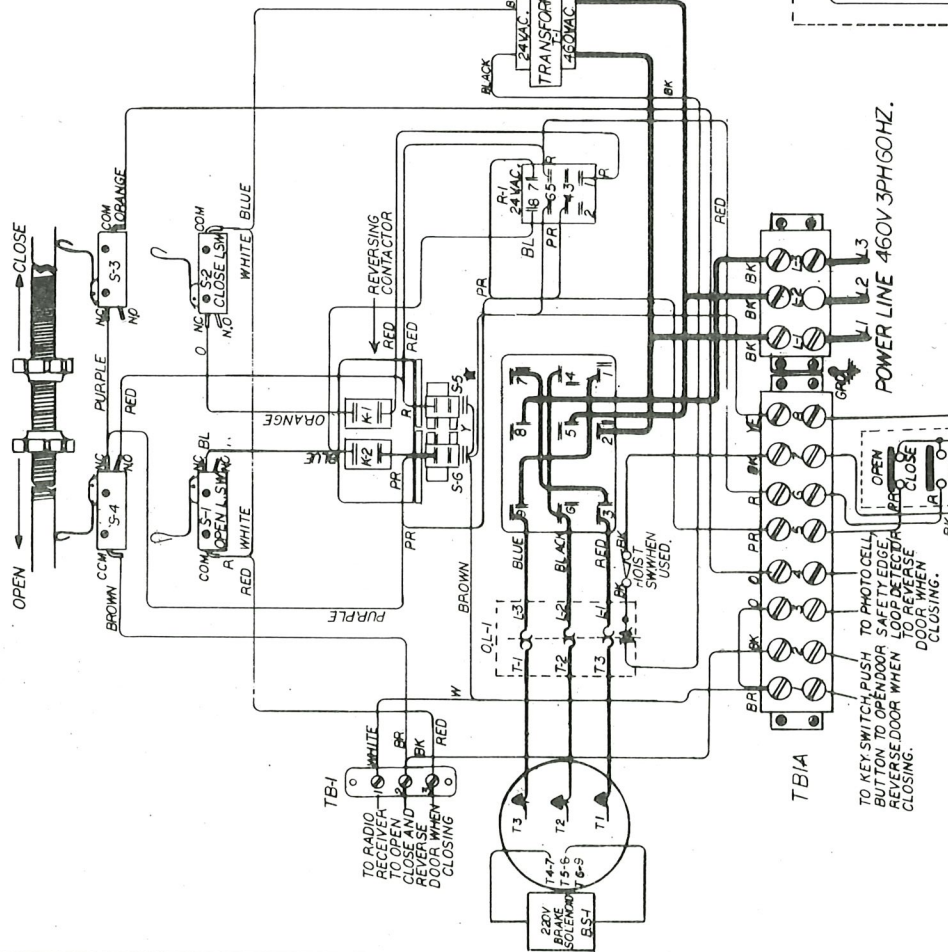
TO REV. DOOR TO REV. DOOR

COMPONENT LIST

- S-1 OPEN LIMIT SWITCH SBDI
- S-2 CLOSE LIMIT SWITCH SBDI
- S-3 SAFETY SHUT OFF SWITCH SPD
- S-4 DIRECTION SWITCH SPD
- S-5 OPEN AUX HOLDING SWITCH NO
- S-6 CLOSE COIL 24VAC
- K-1 PILOT CELL REVERSING 24VAC
- T-1 TRANSFORMER 450VAC TO 24VAC 30VA
- T-2 24VAC REVERSING CONTACTOR
- T-3 240V 50/80HZ SOLENOID KZ MOTOR
- TB1 3 POLE TERMINAL STRIP (RADIO CONTROL)
- OL-1 THERMAL OVERLOAD HEATER



WHEN TWO 3 BUTTON STATION ARE NEEDED WIRE AS SHOWN



FOR CONSTANT PRESSURE DOWN DISCONNECT YELLOW JUMPER FROM (S-5) TO S6 AND DISCARD AND RECONNECT A NEW RED WIRE FROM (S6) TO TERMINAL #6 TERMINAL STRIP TB1A

NOTE: DIAGRAM SHOWS DEVICES IN THEIR DE-ENERGIZED POSITION.

TO KEY SWITCH PUSH BUTTON TO OPENDOOR SAFETY EDGE LOOP DETECTOR DOOR WHEN CLOSING.

TO PHOTO CELL BUTTON TO OPENDOOR SAFETY EDGE LOOP DETECTOR DOOR WHEN CLOSING.

TO PHOTO CELL BUTTON TO OPENDOOR SAFETY EDGE LOOP DETECTOR DOOR WHEN CLOSING.

TO PHOTO CELL BUTTON TO OPENDOOR SAFETY EDGE LOOP DETECTOR DOOR WHEN CLOSING.

TO PHOTO CELL BUTTON TO OPENDOOR SAFETY EDGE LOOP DETECTOR DOOR WHEN CLOSING.

TO PHOTO CELL BUTTON TO OPENDOOR SAFETY EDGE LOOP DETECTOR DOOR WHEN CLOSING.

TO PHOTO CELL BUTTON TO OPENDOOR SAFETY EDGE LOOP DETECTOR DOOR WHEN CLOSING.