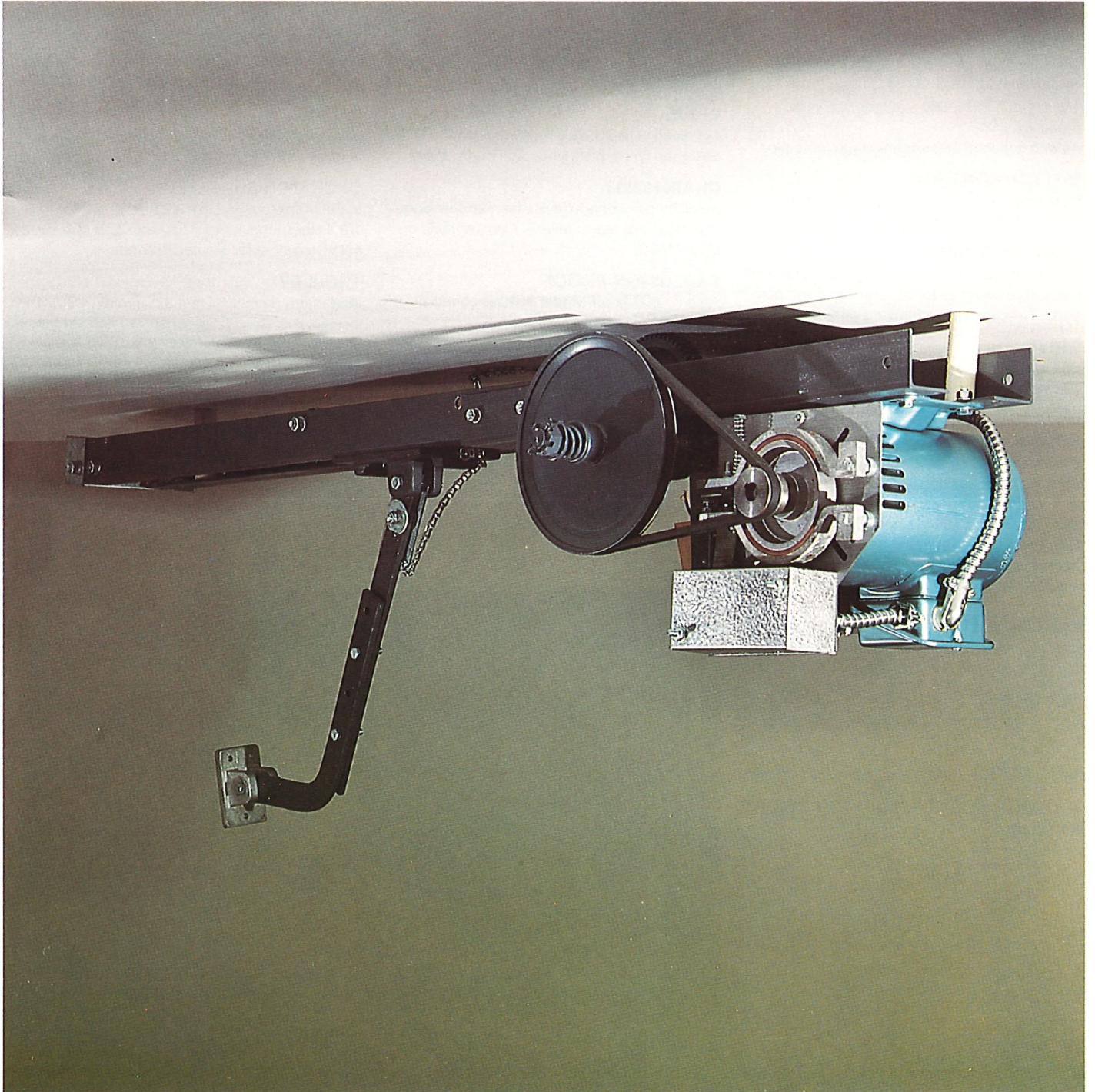




Napoleon/Lynx™

Ambass-a-dor®

**MODEL AMCB
TROLLEY TYPE COMMERCIAL-INDUSTRIAL OPERATORS**





MODEL AMCB TROLLEY TYPE COMMERCIAL-INDUSTRIAL OPERATORS

GENERAL INFORMATION

MOTOR

1/3, 1/2 or 3/4 H.P., 115 – 230 volts, 1 phase, capacitor start.
1/2, 3/4 or 1 H.P., 230 – 460 or 575 volts, 3 phase.
All with overload and undervoltage protection.

BUTTON CONTROL

Door may be stopped in any position and moved up or down with three button control.

LIMIT SWITCHES

Oil impregnated screw type cams and precision type micro switches for both up and down positions. They are easily adjusted without tools.

DRIVE

Belt and gear for maximum power transfer. Traveling carriage slides on dual heavy-angle tracks with #65 chain drive.

SOLENOID BRAKE

Prevents door from coasting and to help secure door in closed position.

ADJUSTABLE FRICTION CLUTCH

Provides safety to operator and door throughout opening and closing cycles and is easily adjusted in field.

DISCONNECT DEVICE

Equipped with a quick release arm for manual operation in case of power failure.

HEADROOM

5 cm (2") minimum from door's highest arc of travel.

BACKROOM—1.4 m (4' - 8") plus door height.

MAXIMUM SUGGESTED DOOR HEIGHT

6.1 m (20'-0").

OPTIONAL

SOLENOID BRAKE

Available without on Model AMC3, consult price sheet.

DRIVE

#41 chain in lieu of #65. This modification is designed for hardworking, high traffic doors.

CHAIN HOIST

Auxiliary disconnect device for manual operation in case of power failure. Also available on Model MC3.

EXPLOSION PROOF

Also available on Model AMC3, consult factory.

WATERPROOF

Available, consult factory.

SPECIFICATIONS

BUTTON CONTROL

Three. Standard "open-close-stop", momentary contact type 24 volts (or constant pressure).

RELAY

Heavy duty Struthers-Dunn reversing contactor or equal.

OPERATOR CHASSIS

Made from 5 cm x 5 cm x 3.2 mm (2" x 2" x 1/8") steel angles reinforced with a steel plate, bolted together for greater strength.

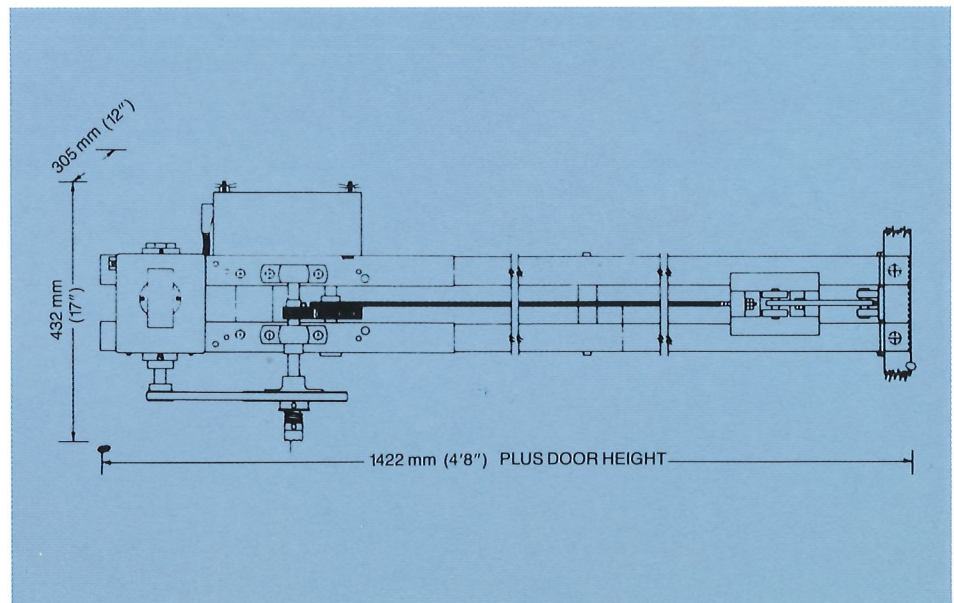
TROLLEY

Made from 5 cm x 5 cm x 3.2 mm (2" x 2" x 1/8") steel angles. An idler riding on two flanged bearings affixed at center of rails prevents chain from rubbing together on doors 3.3 m (10'-0") and over.

CONTROL BOX

Made from 1.27 mm (.050") steel with removable cover.

Specifications subject to change without notice.



OHIO

Napoleon/Lynx
P.O. Box 160, St. Rt. 66 South
Archbold, Ohio 43545
Telephone: 419-445-1010
Toll Free: 800-338-5399
FAX: 419-446-2616

NEW JERSEY

Napoleon/Lynx
166 Gould Ave.
Paterson, N.J. 07533
Telephone: 201-278-5588
Toll Free: 800-234-5969
FAX: 201-742-9832



Napoleon/Lynx
Napoleon Spring Works Inc.
A Lynx Company

NORTH CAROLINA

Napoleon/Lynx
150 Horn St.
Mocksville, NC 27028
Telephone: 704-634-9780
Toll Free: 800-554-9084
FAX: 704-634-9781

CALIFORNIA

Napoleon/Lynx
15801 Stagg St.
Van Nuys, CA 91406
Telephone: 818-908-9935
Toll Free: 800-369-6351
FAX: 818-908-1151

MODEL AMC3 AND AMCB

HEAVY DUTY SPUR GEAR DRIVE TROLLEY TYPE COMMERCIAL OPERATOR

Drawbar opener designed with a unique spur gear drive reduction. For use on commercial and industrial sectional overhead doors with regular lift. Equipped with a heavy duty 3 button 24 volt control station (open, close, stop). Shipped unassembled. Weight 120 lbs.

CONTROL WIRING

B-2 WIRING - 8 POLE TERMINAL STRIP - pre-wired for 3 button 24 volt momentary contact control; single button station; key switch; all auxiliary safety devices to reverse door when closing.

RADIO CONTROL - pre-wired for 3 terminal radio control - 24 volt

FEATURES

- Adjustable friction clutch*
- Solenoid Brake - Standard on model AMCB*
- Unique spur gear drive reduction*
- Continuous duty industrial motor*

MODEL	H.P.	VOLTAGE PHASE	MAXIMUM HEIGHT	MAXIMUM WEIGHT	LIST PRICE
AMC3-211	1/2	115/1	20'	650	
AMC3-221	1/2	230/1	20'	650	
AMC3-223	1/2	230/3	20'	650	
AMC3-243	1/2	440/3	20'	650	

AMCB-211	1/2	115/1	20'	650	
AMCB-221	1/2	230/1	20'	650	
AMCB-223	1/2	230/3	20'	650	
AMCB-243	1/2	440/3	20'	650	
AMCB-411	3/4	115/1	20'	725	
AMCB-421	3/4	230/1	20'	725	
AMCB-423	3/4	230/3	20'	725	
AMCB-443	3/4	440/3	20'	725	

MODIFICATIONS

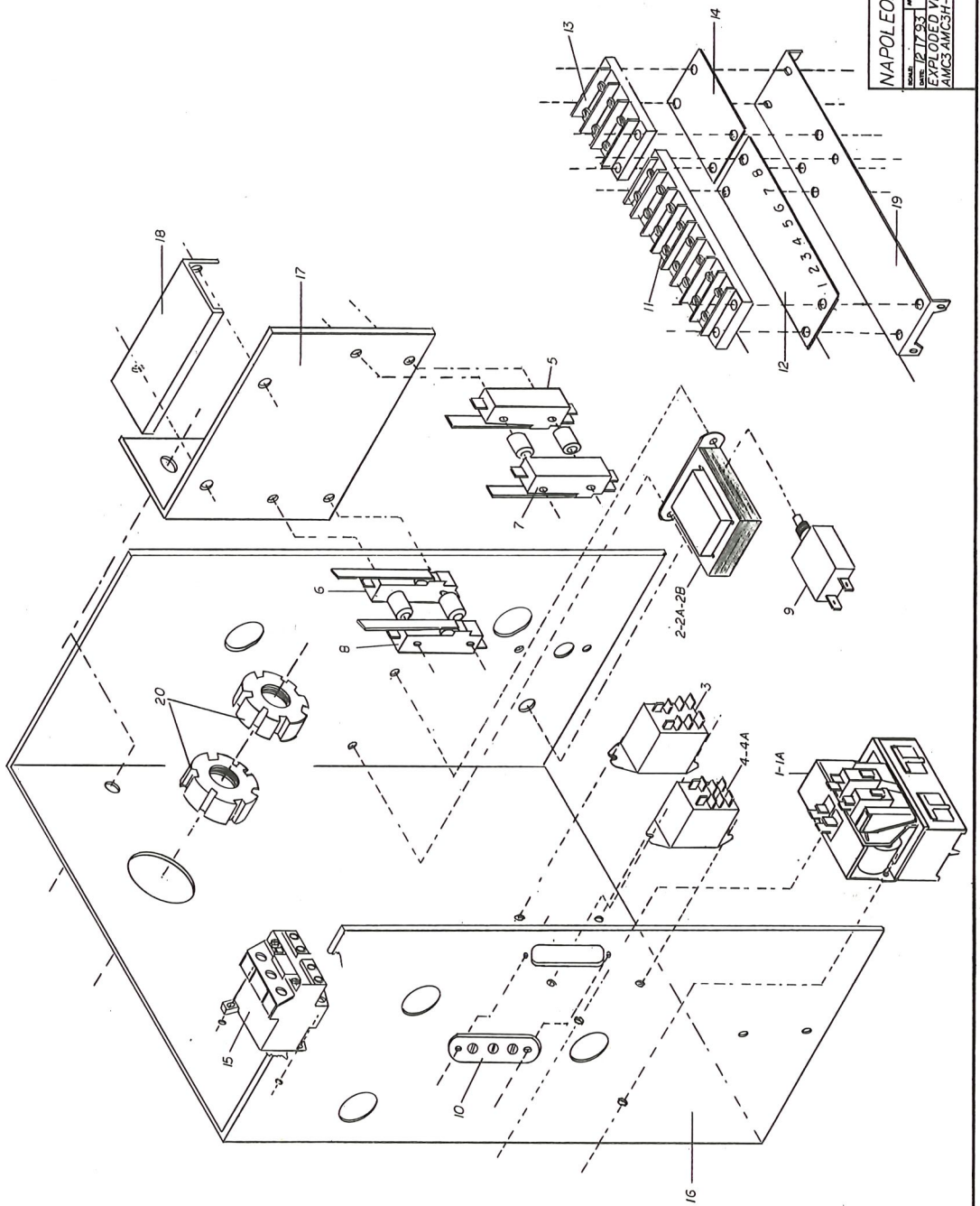
Doors over 14' high (Add for each additional foot)... \$10.00
 NICKEL PLATED CHAIN- ADD \$30.00

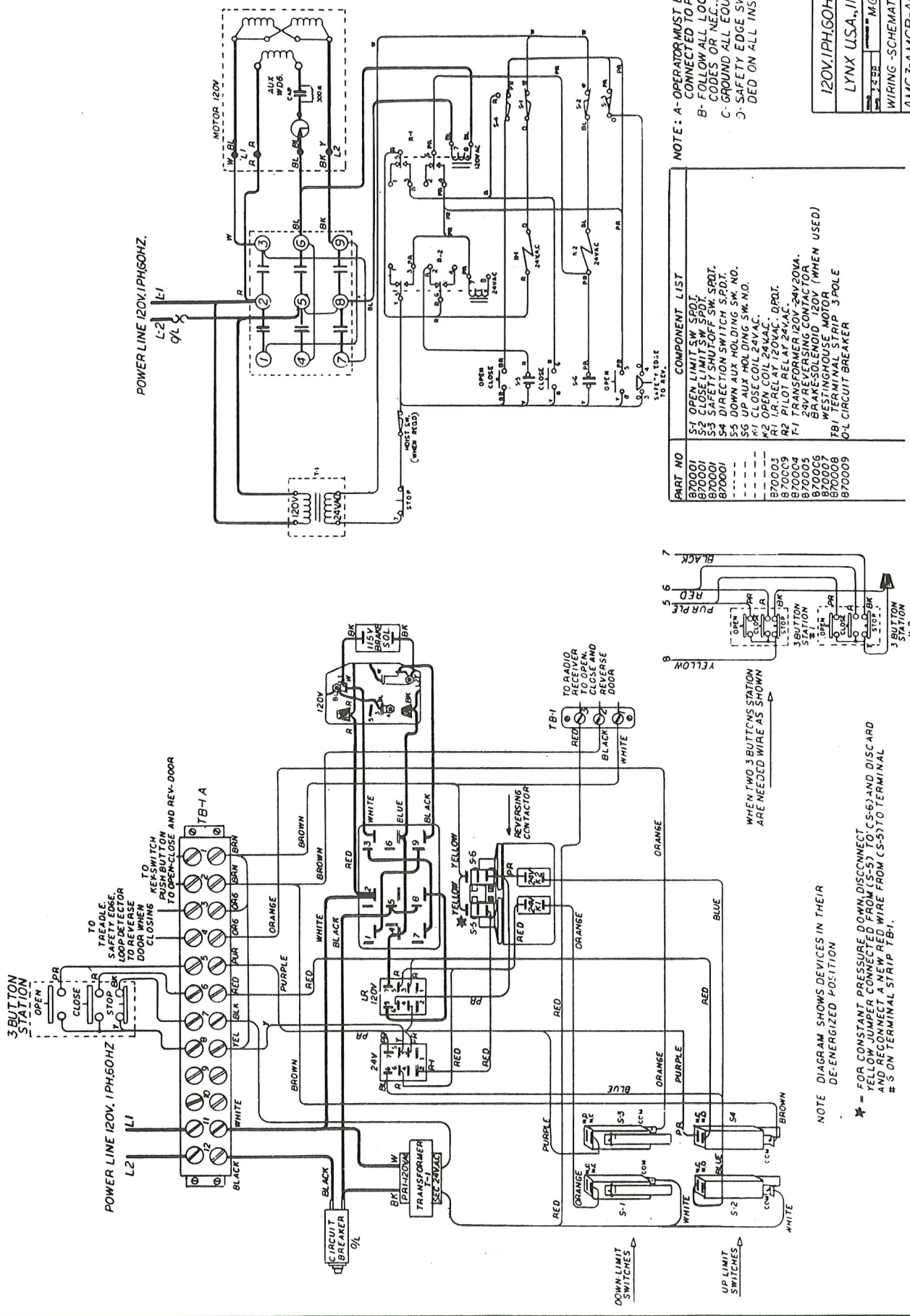
HEAVY DUTY MODIFICATION - Including heavy duty belt (5L) and pulley, plus #41 sprocket and roller chain for application on hard working high traffic industrial sectional doors with standard lift.

All control specifications the same as AMC3 and AMCB.

Specify AMC3-H or AMCB-H....Add to the above prices..... \$85.00

NAPOLEON LYNX CO. PAT. N.J.
 DESIGNED BY *W. J. McCuddy*
 DATE 12-17-53
 EXPLODED VIEW ELECTRICAL BOX MODELS
 AMCS-AMC3H-AMCB-AMCBH
 700095



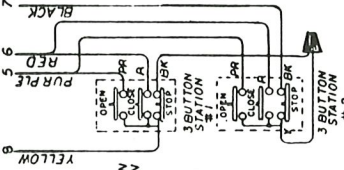


POWER LINE 120V. 1PH. 60HZ.

POWER LINE 120V. 1PH. 60HZ.

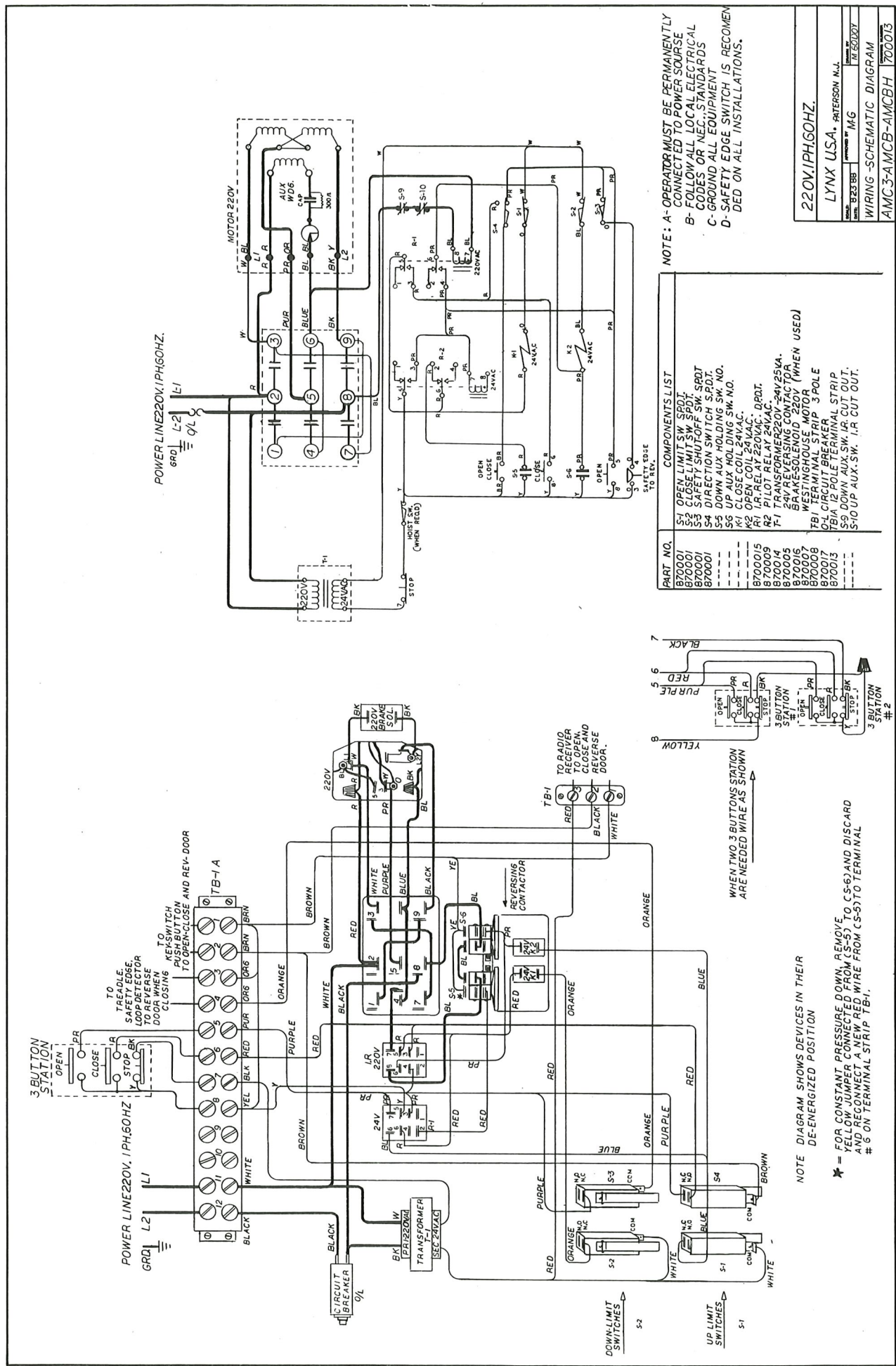
NOTE: A - OPERATOR MUST BE PERMANENTLY CONNECTED TO POWER SOURCE
 B - FOLLOW ALL LOCAL ELECTRICAL CODES OR NEC. STANDARDS
 C - GROUND ALL EQUIPMENT
 D - SAFETY EDGE SWITCH IS RECOMMENDED ON ALL INSTALLATIONS.

PART NO	COMPONENT LIST
B70001	S-1 OPEN LIMIT SW SPDT.
B70001	S-2 CLOSE LIMIT SW SPDT.
B70001	S-3 SAFETY SHUTOFF SW. SPDT.
B70001	S-4 DIRECTION SWITCH S.D.T.
---	S-5 DOWN AUX HOLDING SW. NO.
---	S-6 CLOSE COIL 24VAC.
---	S-7 OPEN COIL 24VAC.
B70003	R-1 1A-RELAY 120VAC. DPDT.
B70009	R-2 PILOT RELAY 24VAC.
B70004	T-1 TRANSFORMER 120V-24V 20VA.
B70005	24V REVERSING CONTACTOR
B70006	BACKSOLENOID 120V (WHEN USED)
B70008	TBI TERMINAL STRIP 3-POLE
B70009	OL CIRCUIT BREAKER



NOTE: DIAGRAM SHOWS DEVICES IN THEIR DE-ENERGIZED POSITION

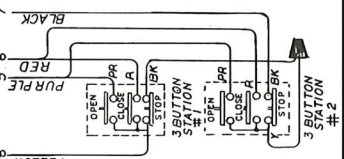
* = FOR CONSTANT PRESSURE DOWN DISCONNECT YELLOW JUMPER CONNECTED FROM (S-5) TO (S-6) AND DISCARD AND RECONNECT A NEW RED WIRE FROM (S-5) TO TERMINAL # 5 ON TERMINAL STRIP TBI-1.



NOTE: A- OPERATOR MUST BE PERMANENTLY CONNECTED TO POWER SOURCE
 B- FOLLOW ALL LOCAL ELECTRICAL CODES OR NEC STANDARDS
 C- GROUND ALL EQUIPMENT
 D- SAFETY EDGE SWITCH IS RECOMMENDED ON ALL INSTALLATIONS.

COMPONENTS LIST

PART NO.	DESCRIPTION
870001	S1 OPEN LIMIT SW. SPDT.
870002	S2 CLOSE LIMIT SW. SPDT.
870003	S3 SAFETY SHUT-OFF SW. SPDT.
870004	S4 DIRECTION SWITCH SW. SPDT.
870005	S5 DOWN AUX. HOLDING SW. NO.
870006	S6 UP AUX. HOLDING SW. NO.
870007	K-1 OPEN COIL 24VAC.
870008	K-2 OPEN COIL 24VAC.
870009	R-1 PILOT RELAY 24VAC.
870010	T-1 TRANSFORMER 220V-24V/25VA.
870011	24V REVERSING CONTACTOR
870012	WESTINGHOUSE MOTOR
870013	CR1 CREAMLINE STRIP 3-POLE
870014	TB1A 12-POLE TERMINAL STRIP
870015	S-10 UP AUX. SW. I.R. CUT OUT.
870016	S-11 DOWN AUX. SW. I.R. CUT OUT.

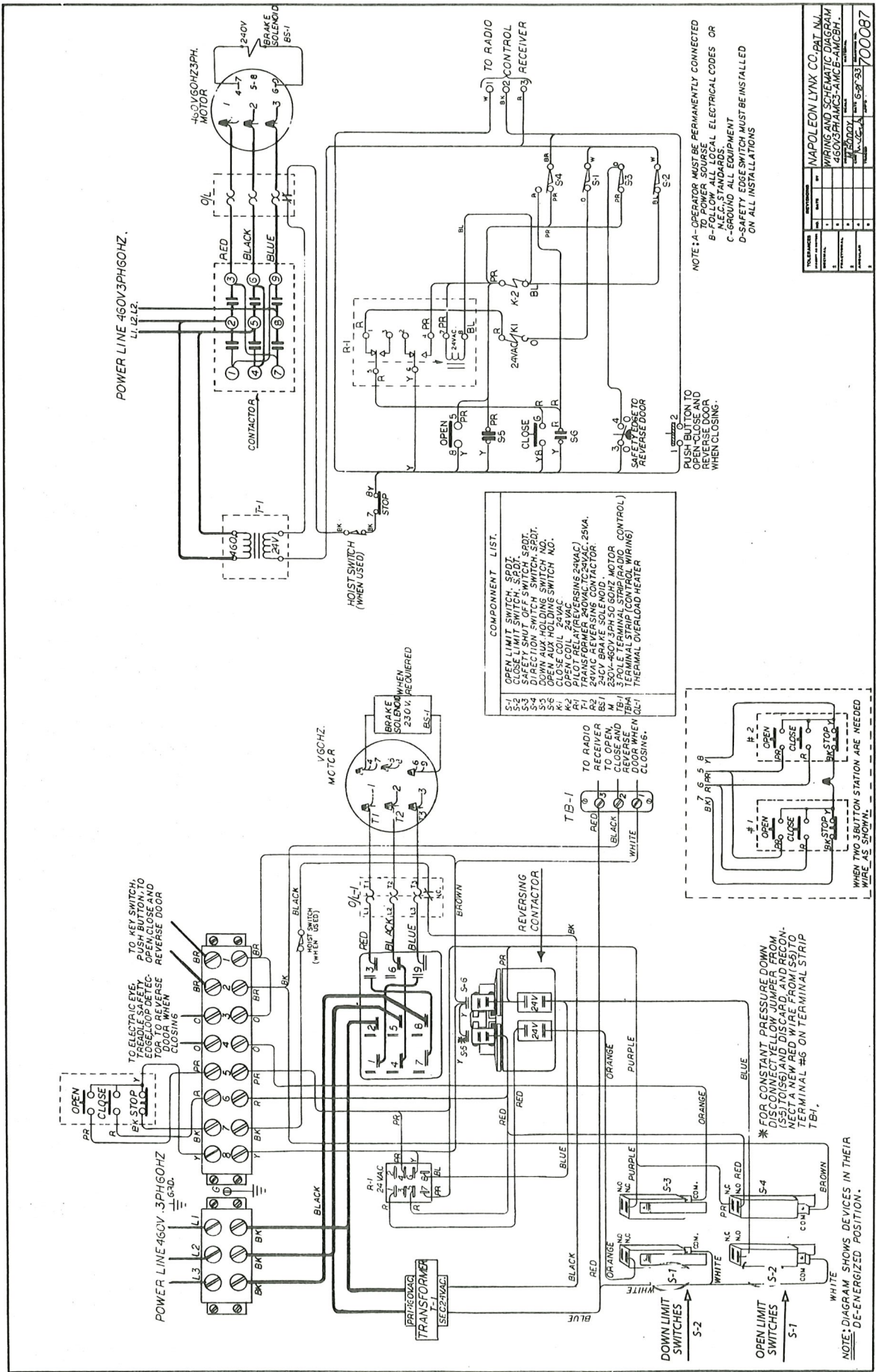


WHEN TWO 3-BUTTON STATIONS ARE NEEDED WIRE AS SHOWN

NOTE: DIAGRAM SHOWS DEVICES IN THEIR DE-ENERGIZED POSITION

* = FOR CONSTANT PRESSURE DOWN REMOVE TO CS-6 AND DISCARD AND RECONNECT A NEW RED WIRE FROM CS-5 TO TERMINAL # 5 ON TERMINAL STRIP TB-1.

220V.1PH.60HZ.	
MADE IN U.S.A.	PARTESSON N.L.
DESIGNED BY	MG
WIRING SCHEMATIC DIAGRAM	
AMC3-AMCB-AMCBH	700013



POWER LINE 460V 3PH 60HZ.

POWER LINE 460V 3PH 60HZ.

POWER LINE 460V 3PH 60HZ.

COMPONENT LIST.

- S-1 OPEN LIMIT SWITCH, SPD.
- S-2 CLOSE LIMIT SWITCH, SPD.
- S-3 DIRECTION SWITCH, SPD.
- S-4 DOWN AUX HOLDING SWITCH, SPD.
- K-1 CLOSE COIL 25VAC
- K-2 OPEN COIL 24VAC
- R-1 FLOLO RELAY (REVERSING 24VAC)
- R-2 24VAC REVERSING CONTACTOR
- F-1 24VAC BRAKE SOLENOID
- F-2 24VAC REVERSING CONTACTOR
- F-3 370V 600PH 50 SDRS MOTOR (CONTROL)
- T-1 TERMINAL STRIP (CONTROL WIRING)
- T-2 THERMAL OVERLOAD HEATER

NOTE: A - OPERATOR MUST BE PERMANENTLY CONNECTED TO RADIO RECEIVER COILS

B - FOLLOW ALL LOCAL ELECTRICAL CODES OR N.E.C. STANDARDS.

C - GROUND ALL EQUIPMENT

D - SAFETY ESCAPE SWITCH MUST BE INSTALLED ON ALL INSTALLATIONS

PUSH BUTTON TO OPEN CLOSE AND REVERSE MOTOR WHEN CLOSING.

WHEN TWO 3BUTTON STATION ARE NEEDED WIRE AS SHOWN.

NO.	REVISION	DATE	BY	DESCRIPTION
1				MAPOLEON LYNX CO. PAT. INJ.
2				WIRING AND SCHEMATIC DIAGRAM
3				REVISIONS
4				REVISIONS
5				REVISIONS
6				REVISIONS
7				REVISIONS
8				REVISIONS
9				REVISIONS
10				REVISIONS

MAPOLEON LYNX CO. PAT. INJ.
WIRING AND SCHEMATIC DIAGRAM
REVISIONS
REVISIONS
REVISIONS
REVISIONS
REVISIONS
REVISIONS
REVISIONS
REVISIONS
REVISIONS

100087

* FOR CONSTANT PRESSURE DOWN DISCONNECT YELLOW JUMPER FROM (S-1) TO (S-2) AND DISCARD. AND RECONNECT A NEW RED WIRE FROM (S-1) TO TERMINAL #6 ON TERMINAL STRIP T-1.

NOTE: DIAGRAM SHOWS DEVICES IN THEIR DE-ENERGIZED POSITION.