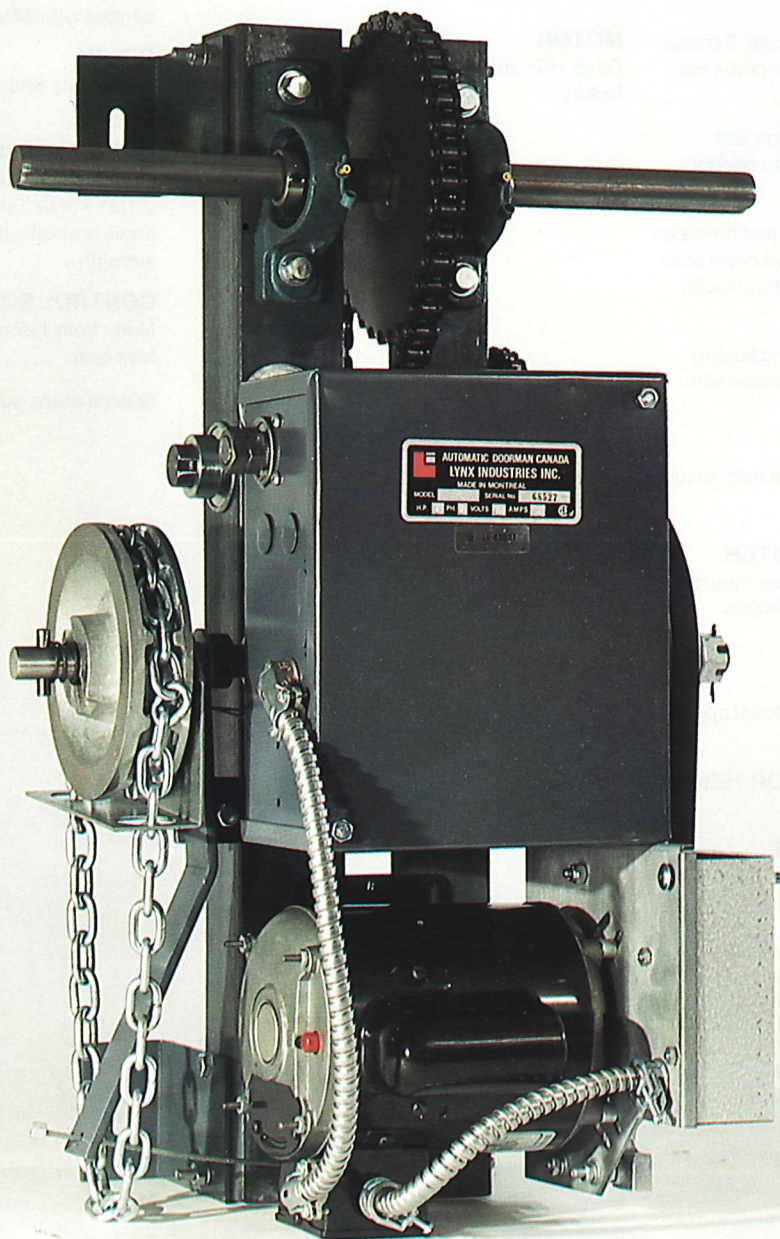


**MODEL AHDC  
JACKSHAFT TYPE COMMERCIAL-INDUSTRIAL OPERATOR**





# MODEL AHDC JACKSHAFT TYPE COMMERCIAL-INDUSTRIAL OPERATOR

## GENERAL INFORMATION

### MOTOR

1/3, 1/2 or 3/4 H.P., 115 – 230 volts, 1 phase, capacitor start.

1/2 or 3/4 H.P., 230 – 460 or 575 volts, 3 phase. All with overload and undervoltage protection.

### BUTTON CONTROL

Door may be stopped in any position and moved up or down with three button control.

### LIMIT SWITCHES

Oil impregnated screw type cams and precision type micro switches for both up and down positions. They are easily adjusted without tools.

### DRIVE

Belt and # 50 chain for efficient long lasting quiet operation. Power transfer is made with # 50 chain.

### SOLENOID BRAKE

Prevents door from coasting and to help secure door in closed position.

### ADJUSTABLE FRICTION CLUTCH

Provides safety to operator and door throughout opening and closing cycles and is easily adjusted in field.

### DISCONNECT DEVICE

Equipped with a chain hoist for manual operation in case of power failure.

### MAXIMUM SUGGESTED DOOR HEIGHT

9.1 m (30'-0").

### SIDEROOM AND MOUNTING

48 cm (18") right or left.

## OPTIONAL

### WATERPROOF

Available, consult factory.

### MOTOR

Other H.P. and voltages available, consult factory.

## SPECIFICATIONS

### BUTTON CONTROL

Three. Standard "open-close-stop", momentary contact type 24 volts (or constant pressure).

### RELAY

Heavy duty Struthers-Dunn reversing contactor or equal.

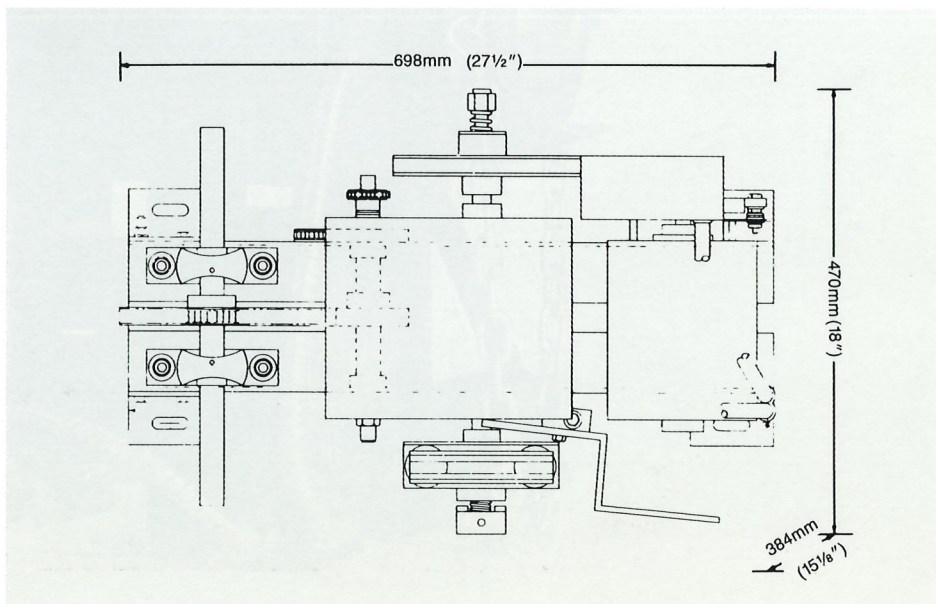
### OPERATOR CHASSIS

Made from 6.35 cm x 6.35 cm x 4.8 mm (2-1/2" x 2-1/2" x 3/16") steel angles mounted on four angle brackets, bolted together for greater strength.

### CONTROL BOX

Made from 1.27 mm (.050") steel with removable cover.

Specifications subject to change without notice.



**Napoleon/Lynx**

Napoleon Spring Works Inc.

A Lynx Company

**NEW JERSEY:**  
166 Gould Ave.  
Paterson, New Jersey  
07503  
Tel.: 201-278-5588  
Toll free: 800-234-5969  
Fax: 201-742-9832

**PHOENIX:**  
101 North 57th Ave.  
Phoenix, Arizona  
85043  
Tel.: 602-352-1010  
Toll free: 800-233-3599  
Fax: 602-352-1341

**OHIO:**  
P.O. Box 160  
Route 66 South  
Archbold, Ohio 43502  
Tel.: 419-445-1010  
Toll free: 800-338-5399  
Fax: 419-446-2616

**LOS ANGELES:**  
15801 Stagg Street  
Van Nuys, California  
91406  
Tel.: 818-908-9935  
Toll free: 800-369-6351  
Fax: 818-908-1151

**MONTREAL:**  
175 ave. Upper Edison  
St-Lambert, Quebec  
J4R 2R3  
Tel.: 514-866-1068  
Fax: 514-466-8852

**TORONTO:**  
1040 Meyerside Drive  
Mississauga, Ontario  
L5T 1J4  
Tel.: 416-674-4606  
Fax: 416-670-0806



**MODEL AHDCJ**

**HEAVY DUTY JACKSHAFT HOIST TYPE COMMERCIAL - INDUSTRIAL OPERATOR**

Jachshaft hoist type opener equipped with manual chain hoist for emergency operation in case of power failure. For use on commercial and industrial sectional doors with high lift or vertical lift, rolling steel doors and grills. Designed for hard working, high traffic doors.  
Shipping weight approx. 120 lbs

**CONTROL WIRING**

B-2 WIRING - 8 POLE TERMINAL STRIP - pre-wired for 3 button 24 volt momentary contact control; single button station; key switch; all auxiliary safety devices to reverse door when closing.

RADIO CONTROL - pre-wired for 3 terminal radio control - 24 volt  
Radio Control pre-wired for 3 terminal radio control - 24 volt

**FEATURES**

- Shaft output speed 44 R. P. M.*
- Universal side mount converts quickly to right or left side mount*
- Clutch fully adjustable friction type*
- Solenoid brake heavy duty self adjusting type*
- Chain hoist - built in standard*
- Floor level disconnect*

MODEL	H.P.	VOLTAGE PHASE	MAXIMUM HEIGHT	MAXIMUM WEIGHT	LIST PRICE
AHDCJ-211	1/2	115/1	20'	780	
AHDCJ-221	1/2	230/1	20'	780	
AHDCJ-223	1/2	230/3	20'	780	
AHDCJ-243	1/2	440/3	20'	780	
AHDCJ-411	3/4	115/1	20'	870	
AHDCJ-421	3/4	230/1	20'	870	
AHDCJ-423	3/4	230/3	20'	870	
AHDCJ-443	3/4	440/3	20'	870	
AHDCJ-443	1	115/1	20'	1050	
AHDCJ-111	1	230/1	20'	1050	
AHDCJ-121	1	230/3	20'	1050	
AHDCJ-123	1	440/3	20'	1050	

**OPTIONS**

OPTION	LIST
#50 chain & sprockets for S.R.D. 1" & 1 1/4" Shaft	

**MODIFICATIONS**

See accessories page for applicable modifications



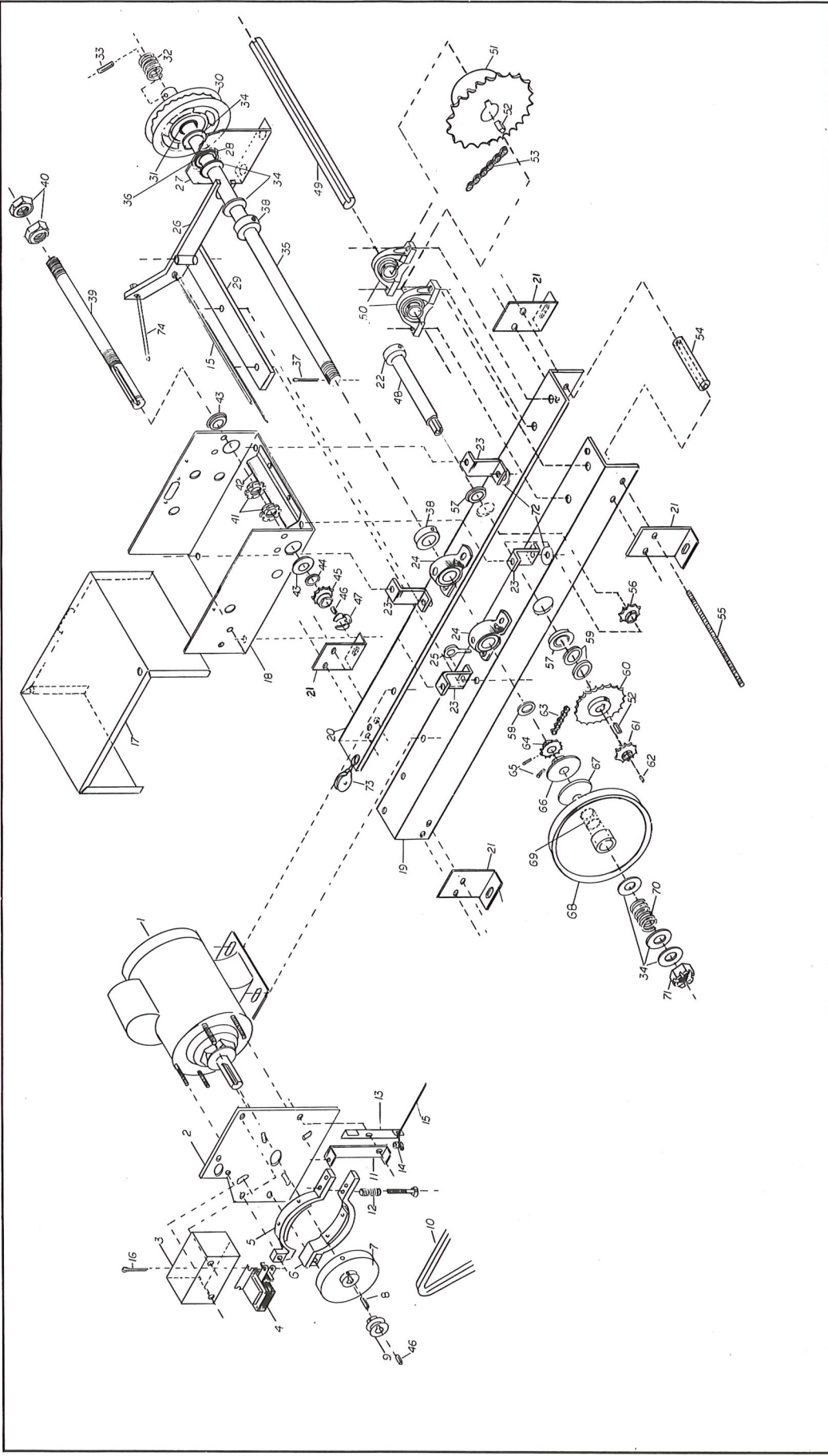


**NAPOLEON / LYNX**

**PARTS LIST DRAWING #700034 ELECTRICAL BOX  
MODEL ALDJ/B/H - AMCJ/H - AHDCJ - AHGO - AGHO**

4/1/99

REF#	DESCRIPTION	QTY.	LIST PRICE
1	SPRING, TRAVELING NUT RETAINER 1/4" X 1/2"LG	2	
2	TRAVELING NUT RETAINER PLATE	1	
3	TRAVELING NUT, 5/8-24 THREAD	2	
4	SWITCH, LIMIT (E13-80H)	4	
5	TERMINAL STRIP SUPPORT BRACKET	1	
6	FLANGED BALL BEARING, 5/8"ID X 1 3/8"OD	2	
7	LIMIT SHAFT, 5/8"OD X 10 1/2"LG	1	
8	WASHER SPACER, 5/8"ID X 1"OD X 1/8"THK (SPECIAL)	1	
9	WASHER SPACER, 5/8"ID X 13/16"OD X 1/16"THK (SPECIAL)	1	
10	SPROCKET, 48B9 X 5/8"BORE, 3/16"KW (STEEL)	1	
11	KEY STOCK, 3/16"SQ X 1/2"LG	1	
12	HEX JAM NUT, 5/8-24	2	
13	SPACER, OVERLOAD 1/4" X 1/4" (NYLON)	4	
14	RETAINING RING	1	
15	TERMINAL BLOCK, 8 POLE L.V (78008) (AMCJ/H-AHDCJ-AGHO)	1	
15A	TERMINAL BLOCK, 8 POLE L.V (76008) (ALDJ/H)	1	
16	TERMINAL BLOCK, 3 POLE, HIGH VOLTAGE, (21003)	1	
17	FIBER MARKER, 8 POLE, LOW VOLTAGE, (VF18008-001)(AMCJH)	1	
17A	FIBER MARKER, 8 POLE, LOW VOLTAGE, VF14008-10 (ALDJ/H)	1	
18	FIBER MARKER, 3 POLE HIGH VOLTAGE, (VF2109-0303)	1	
19	COVER, ELECTRICAL BOX	1	
20	TERMINAL STRIP, 3 POLE (LY040488)	1	
21	TRANSFORMER, 120-24V/40VA	1	
21A	TRANSFORMER, 240-24V/40VA	1	
21B	TRANSFORMER, 460/24V - 40VA	1	
22	CIRCUIT BREAKERS, 115V (8,10,12,15,20 AMPS)	1	
22A	CIRCUIT BREAKERS, 115V (5,7 AMPS)	1	
23	RELAY, DPDT 24 V FRL-263A024/02CK-OE	1	
24	RELAY, DPDT 120 V FRL-263A120/02CK-OE	1	
24A	RELAY, DPDT 240 V	1	
24B	RELAY, 3PDT 24 V (OMRON) (USED ON ALDJB)	1	
	CONTACTOR, REVERSING 24V TELEMECANIQUE, P.N. LC2D09	1	
	CONTACTOR, 24V (REPLACEMENT MSD P.N. 275KXX178)	1	
	CONTACTOR, 24V 4 SWITCH (REPLACEMENT MSD PN. 275KXX91)	1	
	CONTACTOR, A275KXX178 - 24V COILS (2 SWITCHES)	1	
	CONTACTOR, A275KXX91 - 24V COILS (4 SWITCHES)	1	
	FOR AHGO ADD:		
	TIMER, DIGITAL SINGLE SHOT (TO CLOSE) (THCU1023E)	1	
*	NOT USED ON ALDJ SERIES		



NAPOLEON LYNX CO. PAT. N.J.	
MODEL AHDCJ	EXPLODED VIEW
DATE 5-18-55	BY W. G. DODD
700086	



NAPOLEON / LYNX

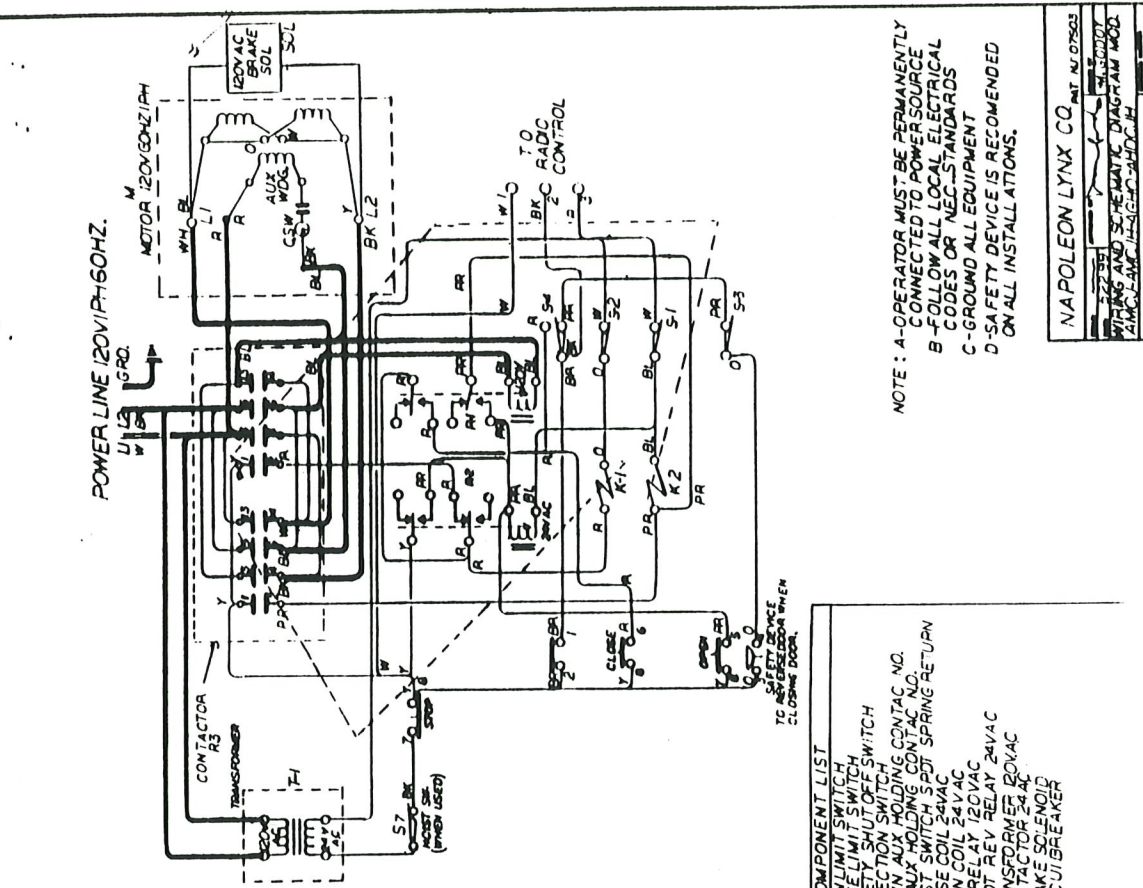
PARTS LIST DWG. #700086 AHDCJ FRAME ASSEMBLY

4/1/99

REF #	DESCRIPTION	QTY	LIST PRICE
1	MTR #C48C22A72 1/2 HP 115/220V 1PH CAP START	1	
1A	MTR #C56A87A72 1/2 HP 115V 1PH (IR) A-O SMITH	1	
1B	MTR #102361 1/2 HP 115V 1PH (IR) LEESON	1	
1C	MTR #327P673 3/4 HP 115/230V 1PH CAP START	1	
1D	MTR #P56A40A72P 1/2 HP 208/220/440V 3PH, (OLD#327P67	1	
1E	MTR #P56A42A72 3/4 HP 208/220/440V 3PH, (OLD #327P67	1	
2	BRAKE PLATE (STEEL)	1	
3	BRAKE COVER	1	
4	BRAKE SOLENOID 115 VOLT	1	
4A	BRAKE SOLENOID 220 VOLT	1	
5	BRAKE SHOE, TOP W/LINING	1	
6	BRAKE SHOE, BOTTOM W/LINING	1	
7	BRAKE DRUM, 4" OD X 5/8"ID, 3/16" KW, 1 S.S.	1	
8	KEY STOCK, 3/16" X 3/16" X 1/2" LG.	1	
9	MOTOR PULLEY, 5L 2"OD X 5/8"ID, 3/16"KW, 2 S.S.	1	
10	V BELT, 5L400	1	
11	BRAKE RELEASE LEVER	1	
12	SPRING, BRAKE COMPRESSION 1/4" X 2 1/2"LG	1	
13	LEVER, MANUAL BRAKE RELEASE	1	
14	WIRE STOP, 1/4"	1	
15	CABLE, 1/16" X 22"LG	1	
16	COTTER PIN, 1/8" X 1 1/4"LG	1	
17	ELECTRICAL BOX COVER	1	
18	ELECTRICAL BOX (ENCLOSURE)	1	
19	FRAME ANGLE, 2 1/2" X 2 1/2" X 27"LG (RIGHT)	1	
20	FRAME ANGLE, 2 1/2" X 2 1/2" X 27"LG (LEFT)	1	
21	MOUNTING FEET	4	
22	COLLAR, STEEL 1"ID	1	
23	ELECTRICAL BOX MOUNTING FEET	4	
24	BEARING, PILLOW BLOCK 3/4"ID	2	
25	EYE BOLT, 4 1/4"LG	1	
26	CHAIN HOIST ARM RELEASE	1	
27	CHAIN HOIST GUIDE	1	
28	LOCK RING 1"	1	
29	SUPPORT BRACKET FOR ARM RELEASE	1	
30	POCKET WHEEL, HOIST	1	
31	BEARING, BRONZE SLEEVE 3/4"ID X 1"OD X 3/4"LG	1	
32	SPRING, COMPRESSION 3/4"ID X 1 1/2"LG	1	
33	ROLL PIN, 5/16"OD X 1 1/2"LG	1	
34	WASHER, FLAT 3/4" SAE	6	
35	CLUTCH SHAFT, 3/4"OD X 17"LG	1	
36	BEARING, BRONZE FLANGE 3/4"ID X 1"OD X 3/8"LG	1	
37	COTTER PIN 1/8" X 1 1/2"LG	1	
38	COLLAR, STEEL 3/4"ID	2	
39	SHAFT, LIMIT 5/8"OD X 10 3/8"LG, THREADED 5/8-24	1	
40	NUT, HEX JAMB 5/8-24	2	
41	TRAVELING NUT, 5/8-24	2	
42	CAM RETAINER PLATE	1	
43	BEARING, FLANGE BALL 5/8"ID X 1 3/8"OD	2	
44	SPACER, 5/8"ID X 1"OD X 1/8"THK	2	
45	SPROCKET, LIMIT 48B9 X 5/8"ID, 3/16"KW	1	

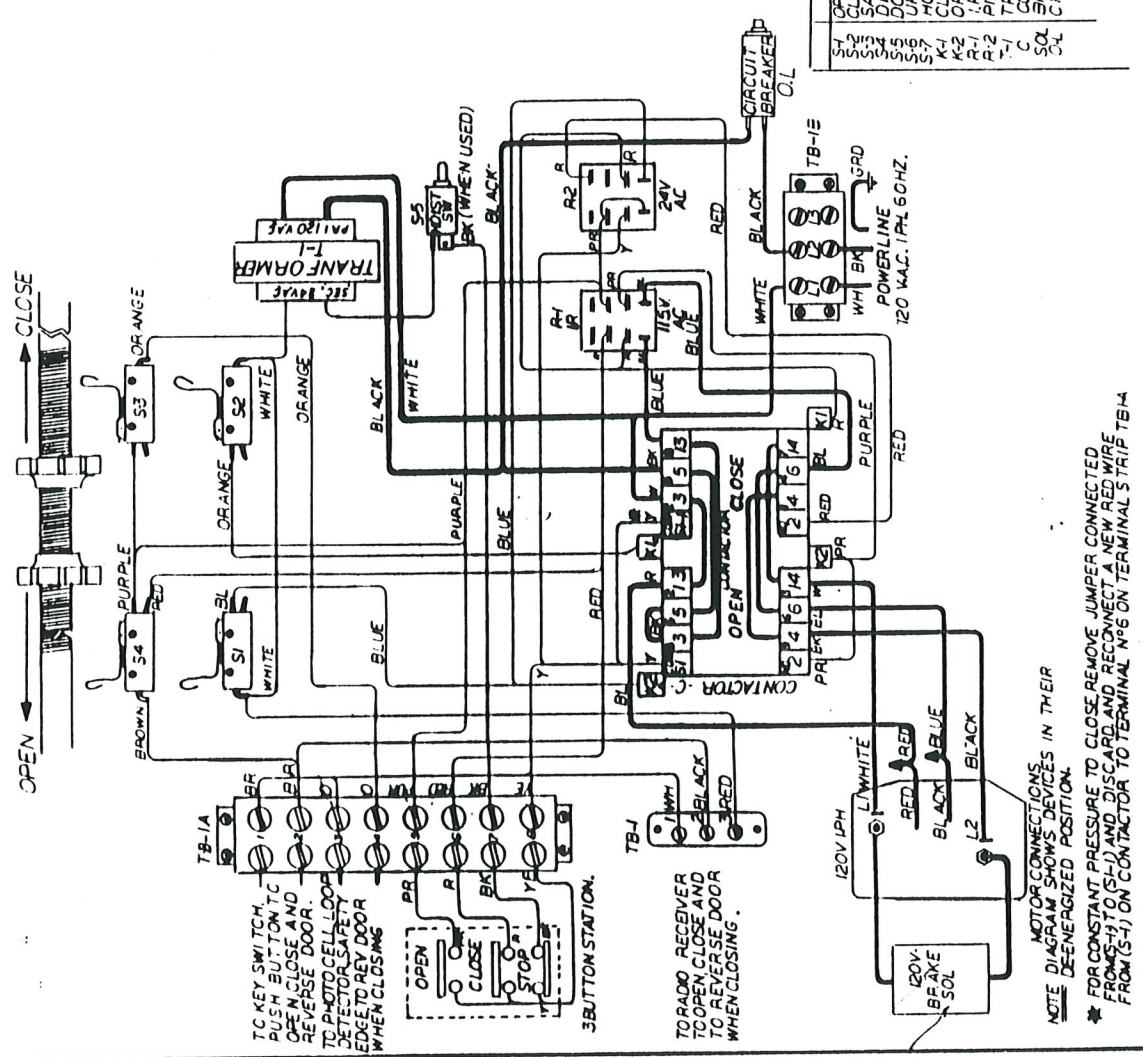


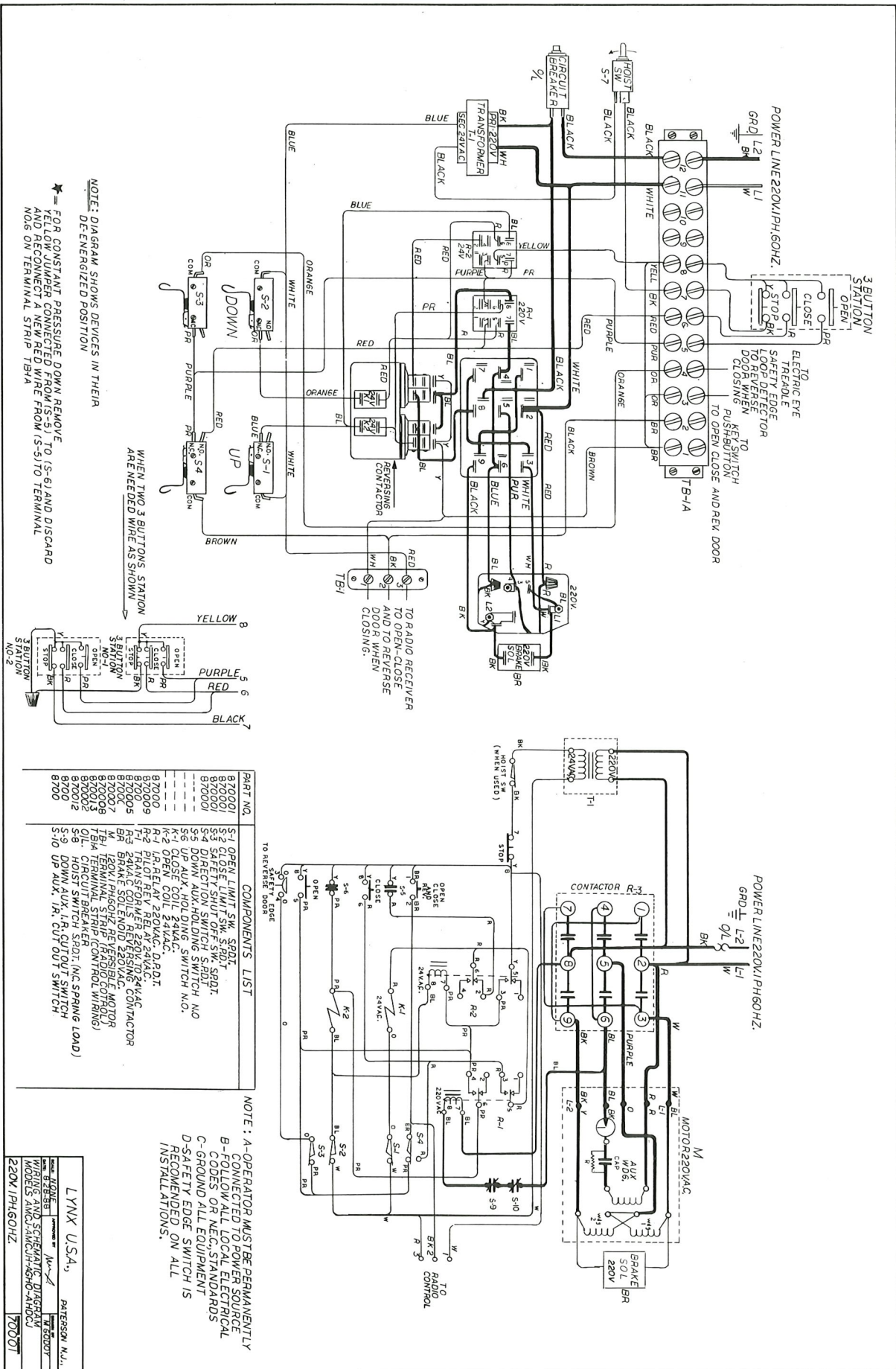




NAPOLEON LYNX CO. PAT. NO. 07503  
 120VAC  
 WIRING AND SYMBOLIC DIAGRAM MOD.  
 120VAC

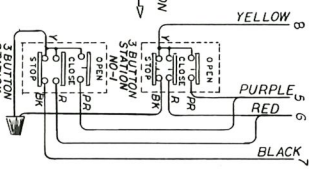
- COMPONENT LIST
- S1 OPEN LIMIT SWITCH
  - S2 CLOSE LIMIT SWITCH
  - S3 SAFETY SHUT OFF SWITCH
  - S4 DIRECTION SWITCH
  - S5 DOWN AUX HOLDING CONTACT NO.
  - S6 UP AUX HOLDING CONTACT NO.
  - S7 HOIST SWITCH S.P.D.T. SPRING RETURN
  - K1 CLOSE COIL 24VAC
  - K2 OPEN COIL 24VAC
  - R1 R. RELAY 120VAC
  - R2 PILOT REV RELAY 24VAC
  - T-1 TRANSFORMER 120VAC
  - C CONTACTOR 24-4C
  - SOL BRAKE SOLENOID
  - CB CIRCUIT BREAKER





NOTE: DIAGRAM SHOWS DEVICES IN THEIR DE-ENERGIZED POSITION

\* FOR CONSTANT PRESSURE DOWN REMOVE FEED COIL FROM TERMINAL NO. (S-6) AND DISCARD AND RECONNECT A NEW RED WIRE FROM (S-5) TO TERMINAL NO.6 ON TERMINAL STRIP TB-1A



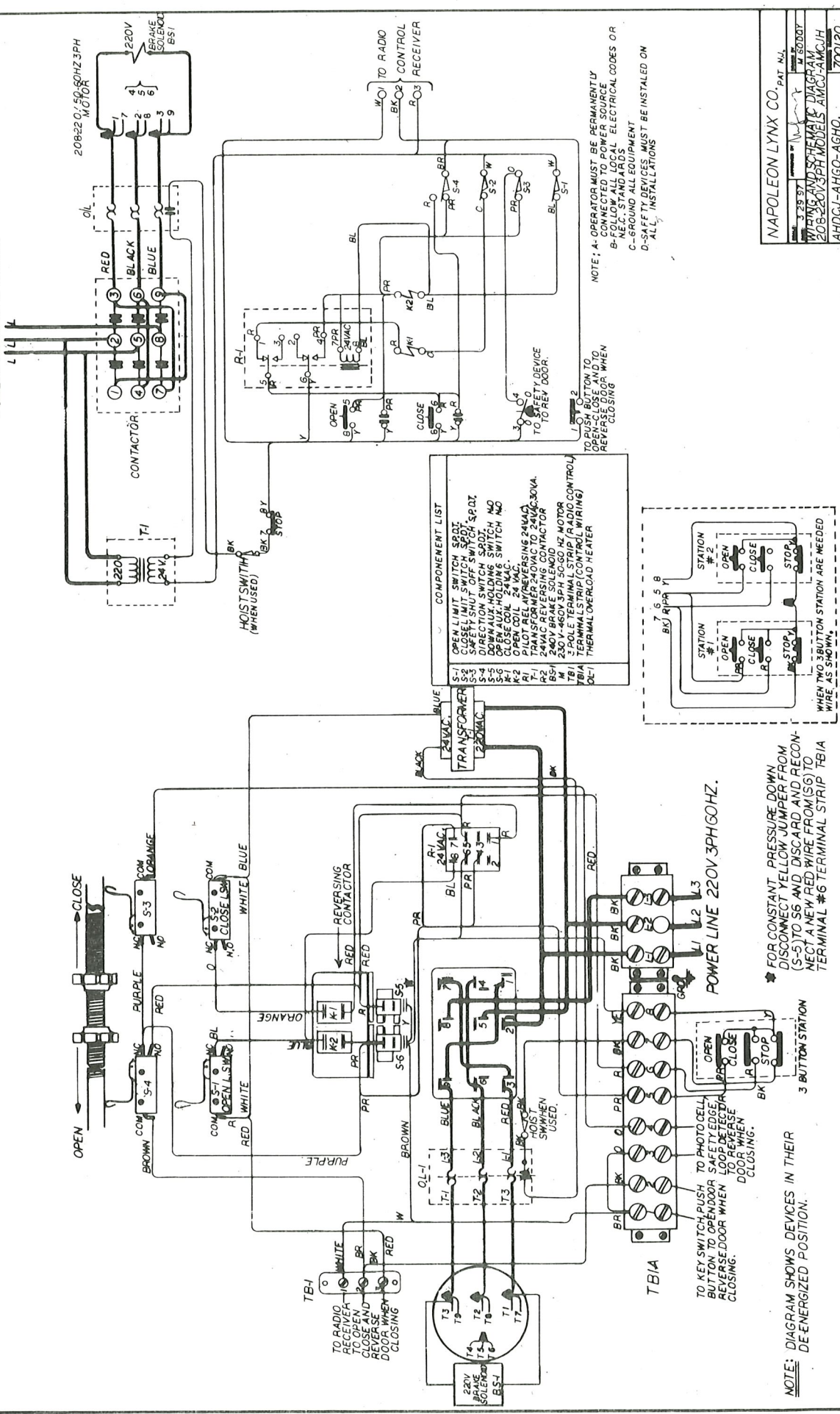
PART NO.	COMPONENTS LIST
B70001	OPEN LIMIT SW. S.P.D.T.
B70002	CLOSE LIMIT SW. S.P.D.T.
B70003	UP DOWN SWITCH S.P.D.T.
B70004	DIRECTION SWITCH S.P.D.T. NO.
B70005	UP AUX. HOLDING SWITCH N.O.
B70006	DOWN AUX. HOLDING SWITCH N.O.
B70007	UP CLOSE COIL 24VAC.
B70008	DOWN CLOSE COIL 24VAC.
B70009	RELAY 220VAC. D.P.D.T.
B70010	TRANSFORMER 220V TO 24VAC.
B70011	PILOT REV RELAY 24VAC.
B70012	BRAKE SOLENOID 220VAC. (CONT. WINDING)
B70013	120V. 1PH. 60HZ. REVERSIBLE MOTOR
B70014	TERMINAL STRIP (RADIO CONTROL)
B70015	3-BUTTON STATION (NO. 1)
B70016	CIRCUIT BREAKER S.P.D.T. (N.C. SPRING LOAD)
B70017	HOIST SWITCH S.P.D.T. (N.C. SPRING LOAD)
B70018	UP DOWN AUX. I.R. CUT OUT SWITCH

NOTE: A- OPERATOR MUST BE PERMANENTLY CONNECTED TO POWER SOURCE  
 B- FOLLOW ALL LOCAL ELECTRICAL CODES OR NEC STANDARDS  
 C- GROUND ALL EQUIPMENT  
 D- SAFETY EDGE SWITCH IS RECOMMENDED ON ALL INSTALLATIONS.

LYNX USA, PATERSON N.J.  
 MODEL NO. 1000  
 PART NO. 100001  
 220V 1PH 60HZ 70001



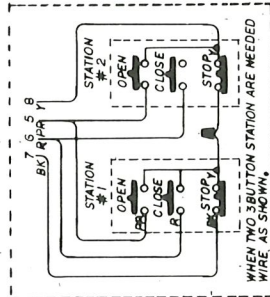
POWER LINE 220V 3PH 60HZ.



- COMPONENT LIST**
- S-1 OPEN LIMIT SWITCH SPDT
  - S-2 CLOSE LIMIT SWITCH SPDT
  - S-3 SAFETY SHUT OFF SWITCH SPDT
  - S-4 DIRECTION SWITCH SPDT
  - S-5 OPEN AUX. HOLDING SWITCH NC
  - S-6 CLOSE COIL 24VAC
  - K-1 DIRECT COIL REVERSING 24VAC
  - K-2 240V BRAKE SOLENOID
  - T-1 TRANSFORMER 240VAC TO 24VAC 30VA
  - T-2 240V BRAKE SOLENOID
  - T-3 2-POLE TERMINAL STRIP (RADIO CONTROL)
  - TB1A 3-POLE TERMINAL STRIP (CONTROL WIRING)
  - OL-1 THERMAL OVERLOAD HEATER

NOTE: A- OPERATOR MUST BE PERMANENTLY CONNECTED TO POWER SOURCE  
 B- FOLLOW ALL LOCAL ELECTRICAL CODES OR NEC. STANDARDS  
 C- SHROUDING ALL EXPOSED PARTS  
 D- ALL INSTALLATIONS MUST BE INSTALLED ON ALL INSTALLATIONS

TO PHOTOCELL SAFETY LOOP DETECTOR TO REVERSE DOOR WHEN CLOSING.



FOR CONSTANT PRESSURE DOWN DISCONNECT YELLOW JUMPER FROM (S-5) TO S6 AND DISCARD AND RECONNECT A NEW RED WIRE FROM (S6) TO TERMINAL #6 BUTTON STATION TB1A

POWER LINE 220V 3PH 60HZ.

TO RADIO RECEIVER TO OPEN CLOSE AND REVERSE DOOR WHEN CLOSING

TO KEY SWITCH PUSH BUTTON TO OPEN DOOR SAFETY LOOP DETECTOR TO REVERSE DOOR WHEN CLOSING.

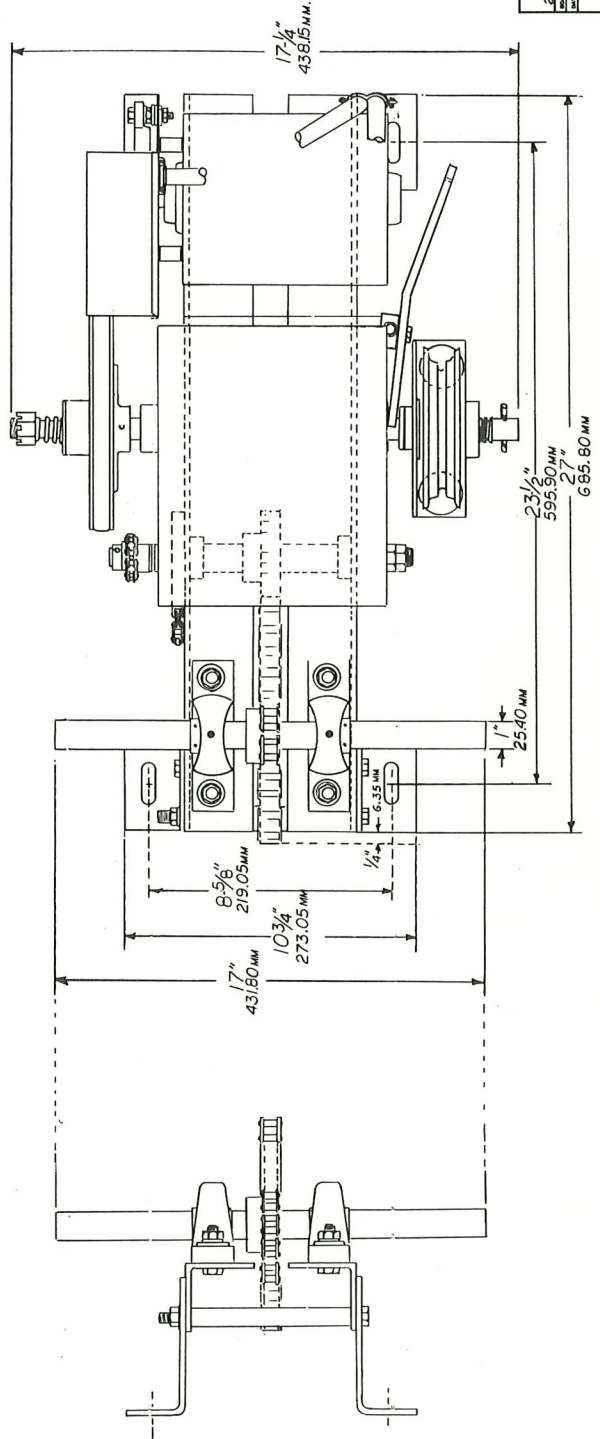
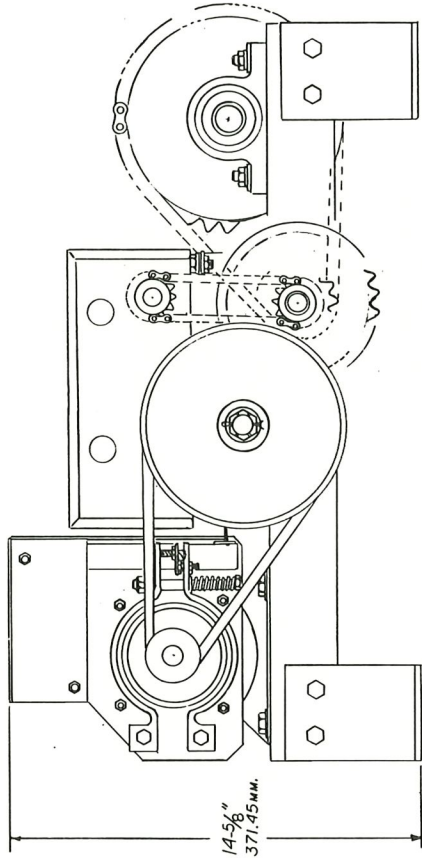
NOTE: DIAGRAM SHOWS DEVICES IN THEIR DE-ENERGIZED POSITION.

NAPOLEON LYNX CO. PAT. N.L.

3 39 97 W 8007  
 WIRING AND SCHEMATIC DIAGRAM  
 ZDS-220V3PH MODELS AMCO-FAMCO  
 AHDCJ-AHGO-AGHO. 700120







NAPOLI-ON-VNYX  
 25 GATEWAY BLVD. PATTERSON, N.J. 07544  
 DATE: 7-25-79 DRAWN BY: M.S.  
 M. 62007  
 MODEL AHDC.  
 SHOP DRAWING 700015