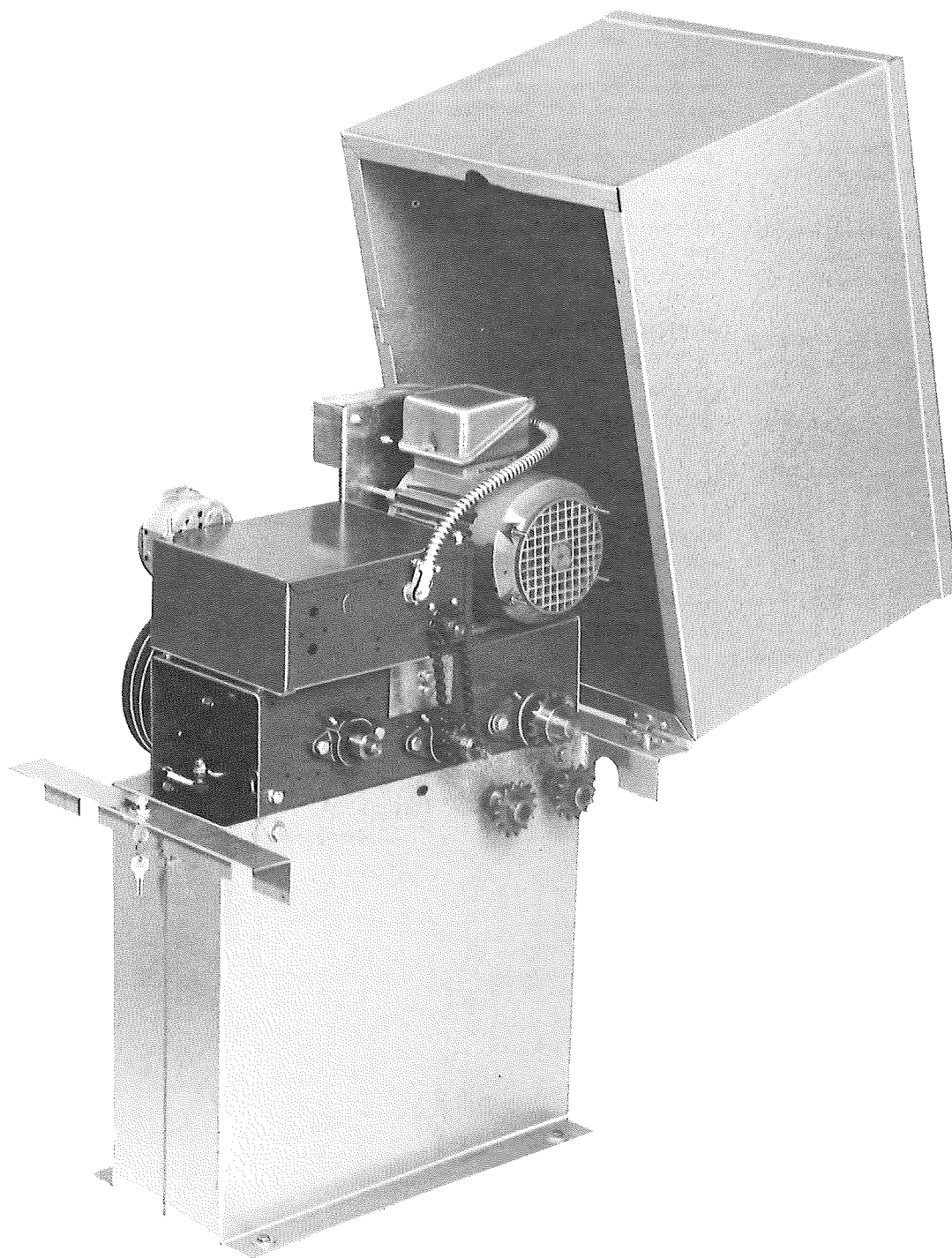


---

**MODEL AHGO  
HEAVY DUTY INDUSTRIAL SLIDING GATE OPERATOR**

---



**Sold By:**

--



# MODEL AHGO HEAVY DUTY INDUSTRIAL SLIDING GATE OPERATOR

## GENERAL INFORMATION

### MOTOR

1/2 H.P., all voltages available.

### BUTTON CONTROL

Gate may be stopped in any position and moved right or left with three button control.

### LIMIT SWITCHES

Oil impregnated screw type cams and precision type micro switches for open and close positions. They are easily adjusted without tools.

### AUTOMATIC REVERSE

If gate meets an obstruction, it will automatically reverse, providing reversing kit is installed.

### DRIVE

Double belt and #41 chain for efficient long lasting quiet operation. Outside chain is #41 rustless roller type upon request as an extra option.

### SOLENOID BRAKE

Prevents gate from coasting.

### COVER

Weatherproof cover that locks with key.

### DISCONNECT DEVICE

Equipped with emergency lever-arm for manual operation in case of power failure.

### MAXIMUM SUGGESTED GATE WIDTH

9.1 m (30'-0").

### SIDEROOM AND MOUNTING

66 cm (26") universal.

### TIMER

If gate is closed, push of button starts gate open and turns green light on for a preset time 0-5 minutes. At the end of the preset time, the red light is turned on for 15 seconds and then gate closes automatically. If button is pressed when gate is traveling to the close position, it will reverse to the open position and reset timer. If gate is in open position and button is pushed, timer is automatically reset for preset time. There will be no response if button is pressed when gate is traveling to the open position.

### BUTTON CONTROL

110 volts line voltage available.

### MOTOR

Other H.P. and voltages available, consult factory.

### OPTIONAL

#### AUTOMATIC STOP

If gate traveling right or left meets an obstruction, it will automatically stop. This built-in electro-mechanical device is adjustable through the slipping clutch and is patented.

## SPECIFICATIONS

### BUTTON CONTROL

Three. Standard "open-close-stop", momentary contact type 24 volts (or constant pressure).

### RELAY

Heavy duty Struthers-Dunn reversing contactor or equal.

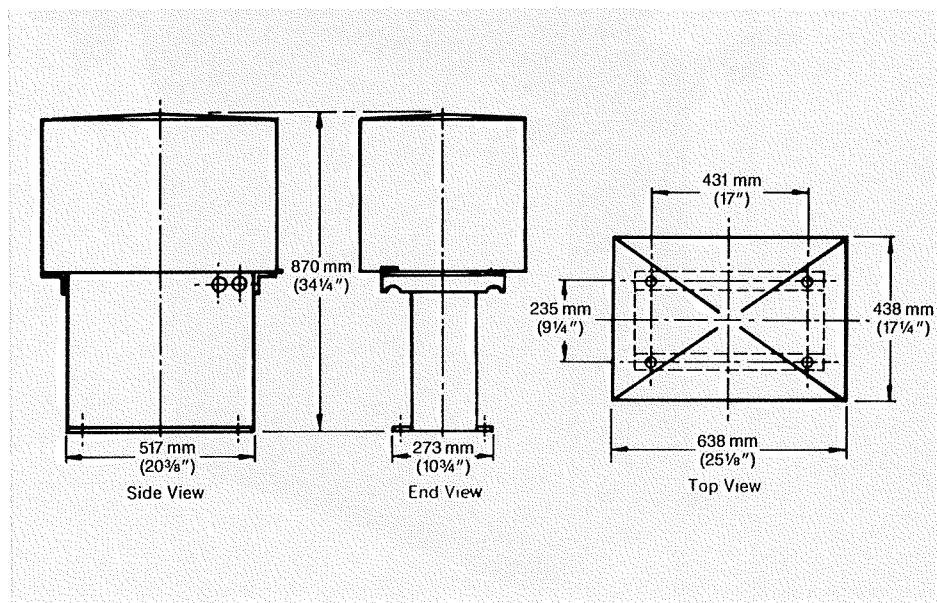
### OPERATOR CHASSIS

Made from 3.2 mm (1/8") steel mounted on enclosed base, bolted together for greater strength.

### CONTROL BOX

Made from 1.27 mm (.050") steel with removable cover.

Specifications subject to change without notice.



**MODEL AHGO**

**HEAVY DUTY INDUSTRIAL SLIDING GATE OPERATOR**

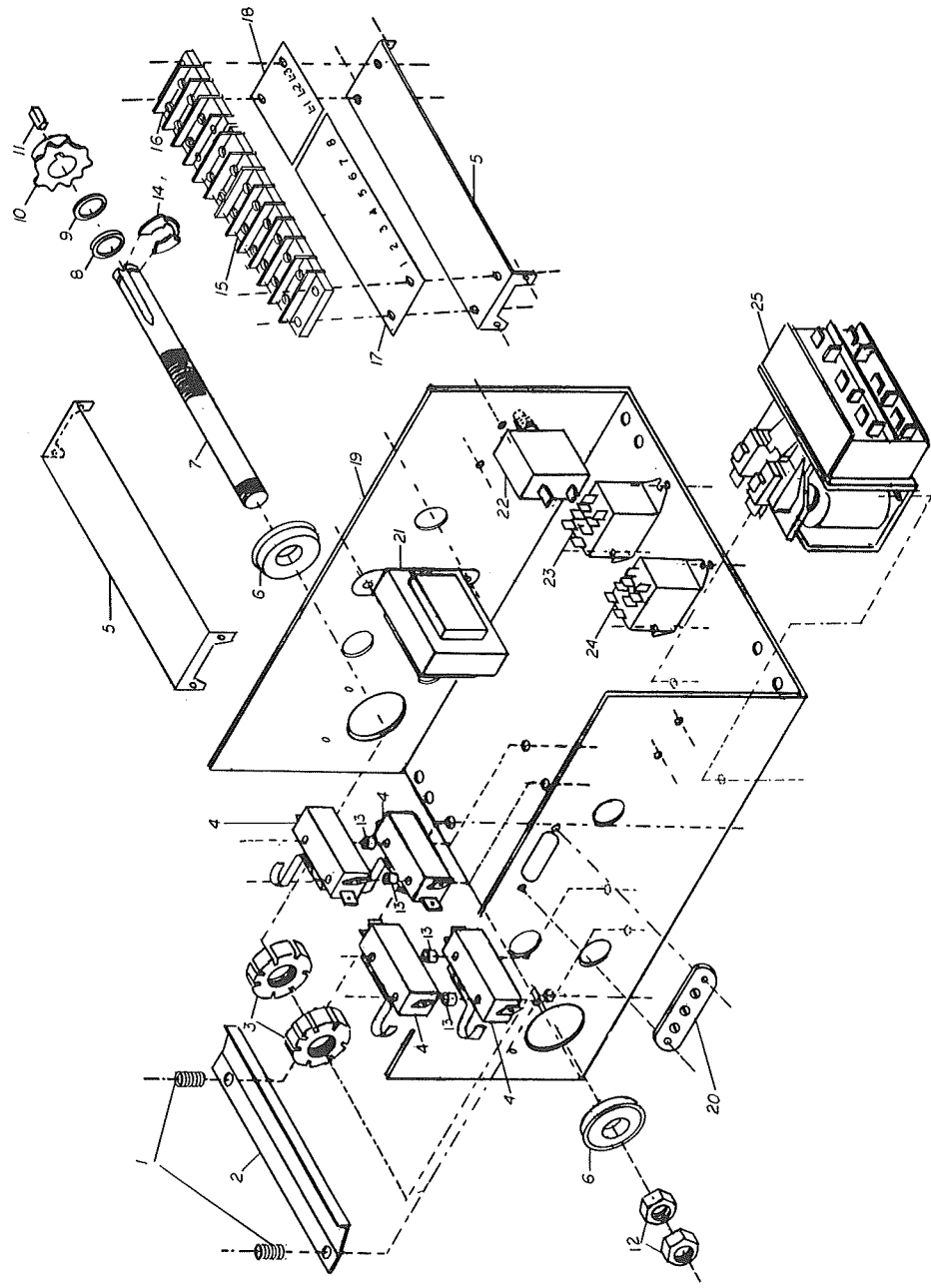
Sliding gate type operator equipped with 24 volt control station voltage, three button control, (open, close, stop) standard. Emergency disconnect-lever arm provides manual operation in case of power failure. Key lock weatherproof cover standard. Pad mounting standard. Single shot timer (adjustable).

**FEATURES**

- Automatic safety reverse - Wired to accept auto reverse kit.
- Solenoid disc brake
- Adjustable friction clutch
- Heavy duty reversing contactor
- Drive - Heavy duty belt and #41 roller chain, plated -20'
- Fully pre-wired to accept all control accessories and options

MODEL	H.P.	VOLTAGE PHASE	MAXIMUM GATE WIDTH	LIST PRICE
AHGO	1/2	115-230-1	30'	
AHGO	1/2	230-460-3	30'	
AHGO	3/4	115-230-1	30'	
AHGO	3/4	230-460-3	30'	
AHGO	1	115-230-1	30'	
AHGO	1	230-460-3	30'	

OPTION	LIST
H.D. Leeson motor, I.R. 3/4hp 115v 1ph	
H.D. Baldor motor, I.R. 1 hp 230-460v 3ph	
H.D. 2 Bolt Flange Block Bearings	
#50 Plated Chain & Sprockets	



NAPOLEON LYNX CO. PAT. N.J.  
 37289 38.11 W 60007  
 NAPOLEON LYNX CO. PAT. N.J.  
 EXPLODED VIEW. 700034

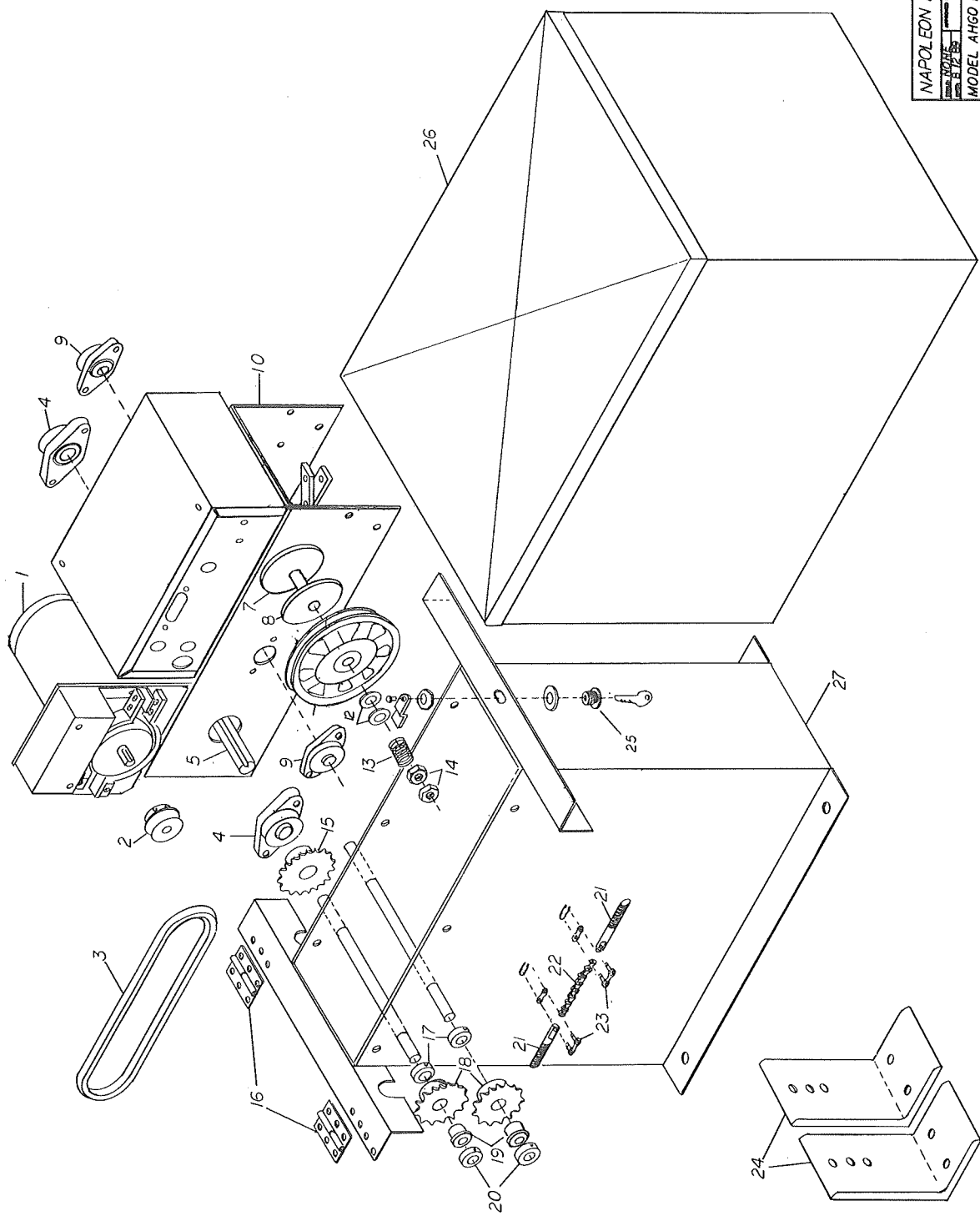
NAPOLEON / LYNX

PARTS LIST DRAWING #700034 ELECTRICAL BOX  
 MODEL ALDJ/B/H - AMCJ/H - AHDCJ - AHGO - AGHO

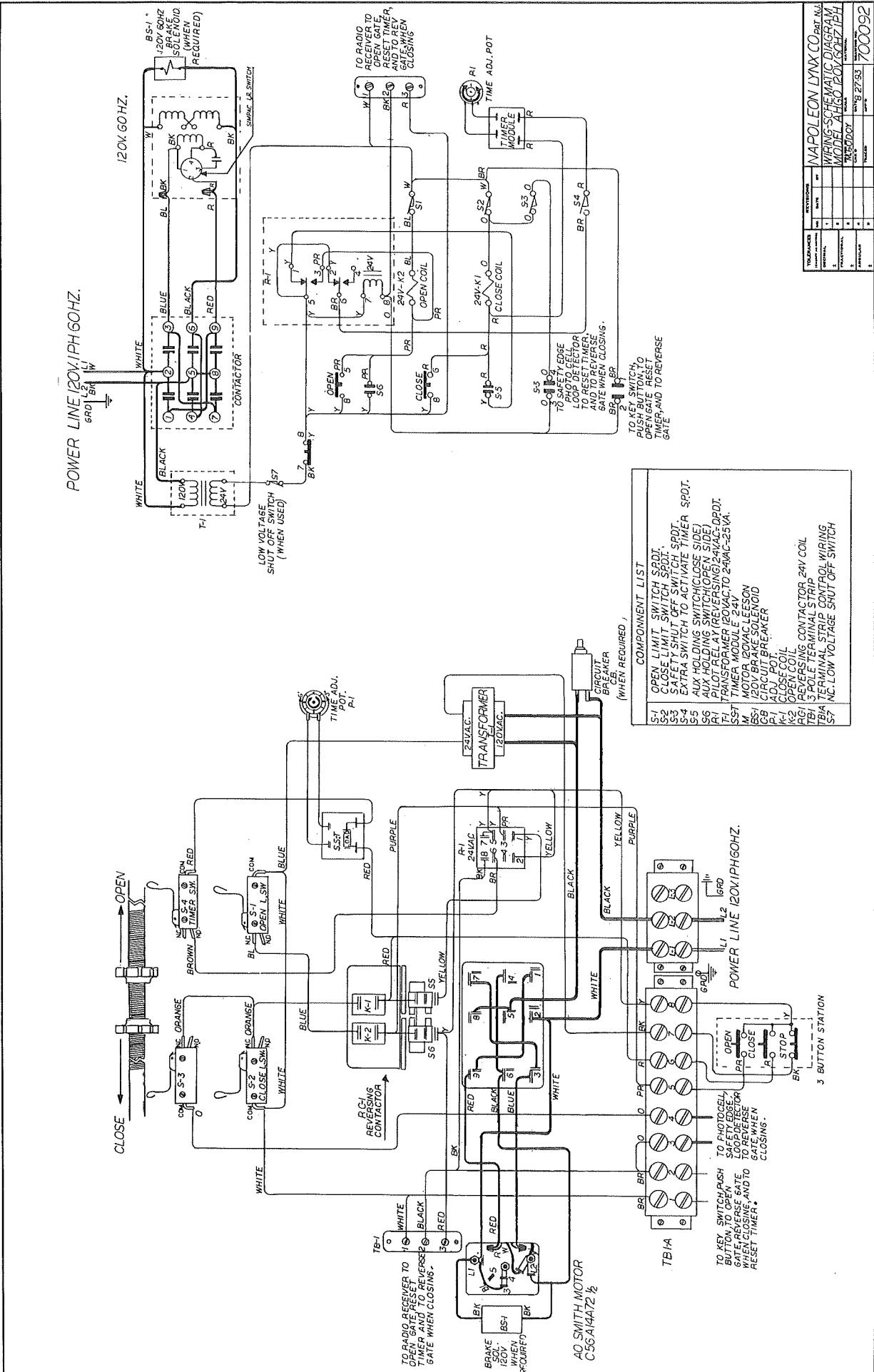
4/1/99

REF#	DESCRIPTION	QTY.	LIST PRICE
1	SPRING, TRAVELING NUT RETAINER 1/4" X 1/2"LG	2	
2	TRAVELING NUT RETAINER PLATE	1	
3	TRAVELING NUT, 5/8-24 THREAD	2	
4	SWITCH, LIMIT (E13-80H)	4	
5	TERMINAL STRIP SUPPORT BRACKET	1	
6	FLANGED BALL BEARING, 5/8"ID X 1 3/8"OD	2	
7	LIMIT SHAFT, 5/8"OD X 10 1/2"LG	1	
8	WASHER SPACER, 5/8"ID X 1"OD X 1/8"THK (SPECIAL)	1	
9	WASHER SPACER, 5/8"ID X 13/16"OD X 1/16"THK (SPECIAL)	1	
10	SPROCKET, 48B9 X 5/8"BORE, 3/16"KW (STEEL)	1	
11	KEY STOCK, 3/16"SQ X 1/2"LG	1	
12	HEX JAM NUT, 5/8-24	2	
13	SPACER, OVERLOAD 1/4" X 1/4" (NYLON)	4	
14	RETAINING RING	1	
15	TERMINAL BLOCK, 8 POLE L.V (78008) (AMCJ/H-AHDCJ-AGHO)	1	
15A	TERMINAL BLOCK, 8 POLE L.V (76008) (ALDJ/H)	1	
16	TERMINAL BLOCK, 3 POLE, HIGH VOLTAGE, (21003)	1	
17	FIBER MARKER, 8 POLE, LOW VOLTAGE, (VF18008-001)(AMCJH)	1	
17A	FIBER MARKER, 8 POLE, LOW VOLTAGE, VF14008-10 (ALDJ/H)	1	
18	FIBER MARKER, 3 POLE HIGH VOLTAGE, (VF2109-0303)	1	
19	COVER, ELECTRICAL BOX	1	
20	TERMINAL STRIP, 3 POLE (LY040488)	1	
21	TRANSFORMER, 120-24V/40VA	1	
21A	TRANSFORMER, 240-24V/40VA	1	
21B	TRANSFORMER, 460/24V - 40VA	1	
22	CIRCUIT BREAKERS, 115V (8,10,12,15,20 AMPS)	1	
22A	CIRCUIT BREAKERS, 115V (5,7 AMPS)	1	
23	RELAY, DPDT 24 V FRL-263A024/02CK-OE	1	
24	RELAY, DPDT 120 V FRL-263A120/02CK-OE	1	
24A	RELAY, DPDT 240 V	1	
24B	RELAY, 3PDT 24 V (OMRON) (USED ON ALDJB)	1	
25	CONTACTOR, REVERSING 24V TELEMECANIQUE, P.N. LC2DO9	1	
	CONTACTOR, 24V (REPLACEMENT MSD P.N. 275KXX178)	1	
	CONTACTOR, 24V 4 SWITCH (REPLACEMENT MSD PN. 275KXX91)	1	
	FOR AHGO ADD:		
	TIMER, DIGITAL SINGLE SHOT (TO CLOSE) (THCU1023E)	1	
*	NOT USED ON ALDJ SERIES		

NAPOLEON LYNX CO. PAT. N.J.  
 MODEL 872 55  
 DESIGNED BY H.G.  
 MODEL AHGO EXPLODED-VIEW  
 700022







POWER LINE 120V, 1PH, 60HZ.

120V, 60HZ.

LOW VOLTAGE SHUT OFF SWITCH (WHEN USED)

TO RADIO RECEIVER TO OPEN GATE, RESET TIMER AND TO REVERSE GATE WHEN CLOSING.

AC SMITH MOTOR C-55A14A72 1/2

- COMPONENT LIST (WHEN REQUIRED)
- S-1 OPEN LIMIT SWITCH SPDT.
  - S-2 CLOSE LIMIT SWITCH SPDT.
  - S-3 SAFETY SHUT OFF SWITCH SPDT.
  - S-4 EXTRA SWITCH TO ACTIVATE TIMER SPDT.
  - S-5 AUX HOLDING SWITCH (CLOSE SIDE)
  - S-6 AUX HOLDING SWITCH (OPEN SIDE)
  - R-1 PILOT RELAY (REVERSING) 24VAC-DPDT.
  - T-1 TRANSFORMER 120VAC TO 24VAC-25VA.
  - SST TIMER MODULE 24V
  - S-7 120V BRK 42P SOLENOID
  - C-55 CIRCUIT BREAKER
  - P-1 ADJ. POT.
  - K-1 CLOSE COIL
  - K-2 OPEN COIL
  - C-55 CONTACTOR 24V COIL
  - TB/A 5 POLE TERMINAL STRIP
  - TB-1 TERMINAL STRIP CONTROL WIRING
  - S-7 NC LOW VOLTAGE SHUT OFF SWITCH

TO PHOTOCELL LOOP DETECTOR AND TO REVERSE GATE WHEN CLOSING.

TO KEY SWITCH (PUSH BUTTON) TO OPEN GATE, RESET TIMER, AND TO REVERSE GATE

POWER LINE 120V, 1PH, 60HZ.

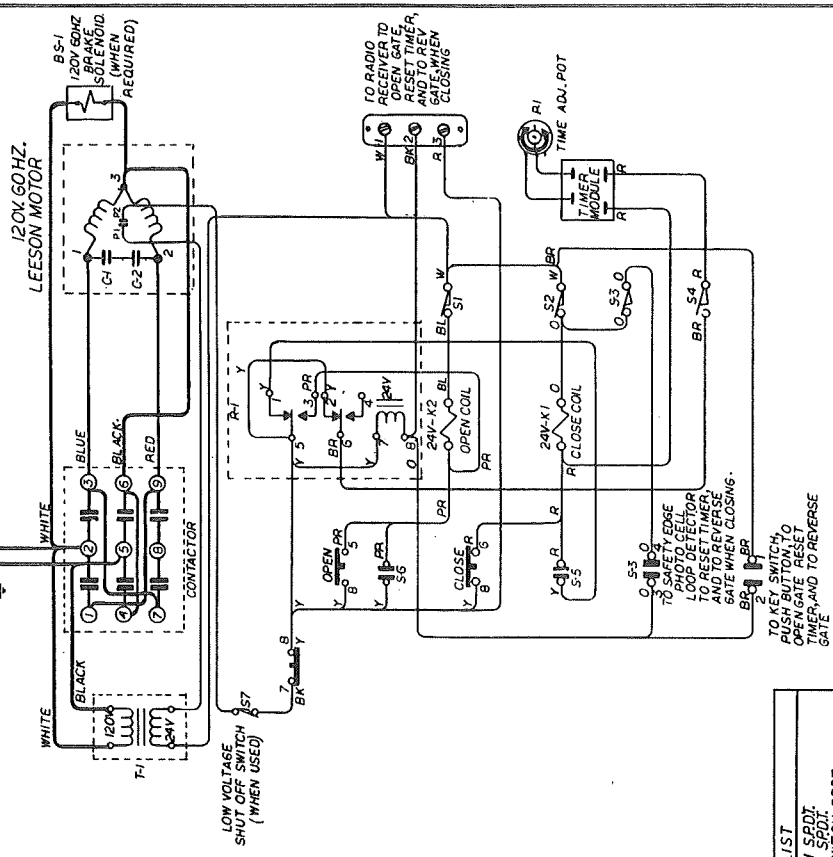
3 BUTTON STATION

REVISED	BY	DATE	REVISION
1			
2			
3			
4			
5			
6			
7			
8			
9			
10			

NAPOLEON LYNN CO. Pat. No. 2,718,273  
 WIRING SCHEMATIC DIAGRAM  
 MODEL A.H.G. 120V, 1PH, 60HZ  
 DATE 11-18-53  
 700092

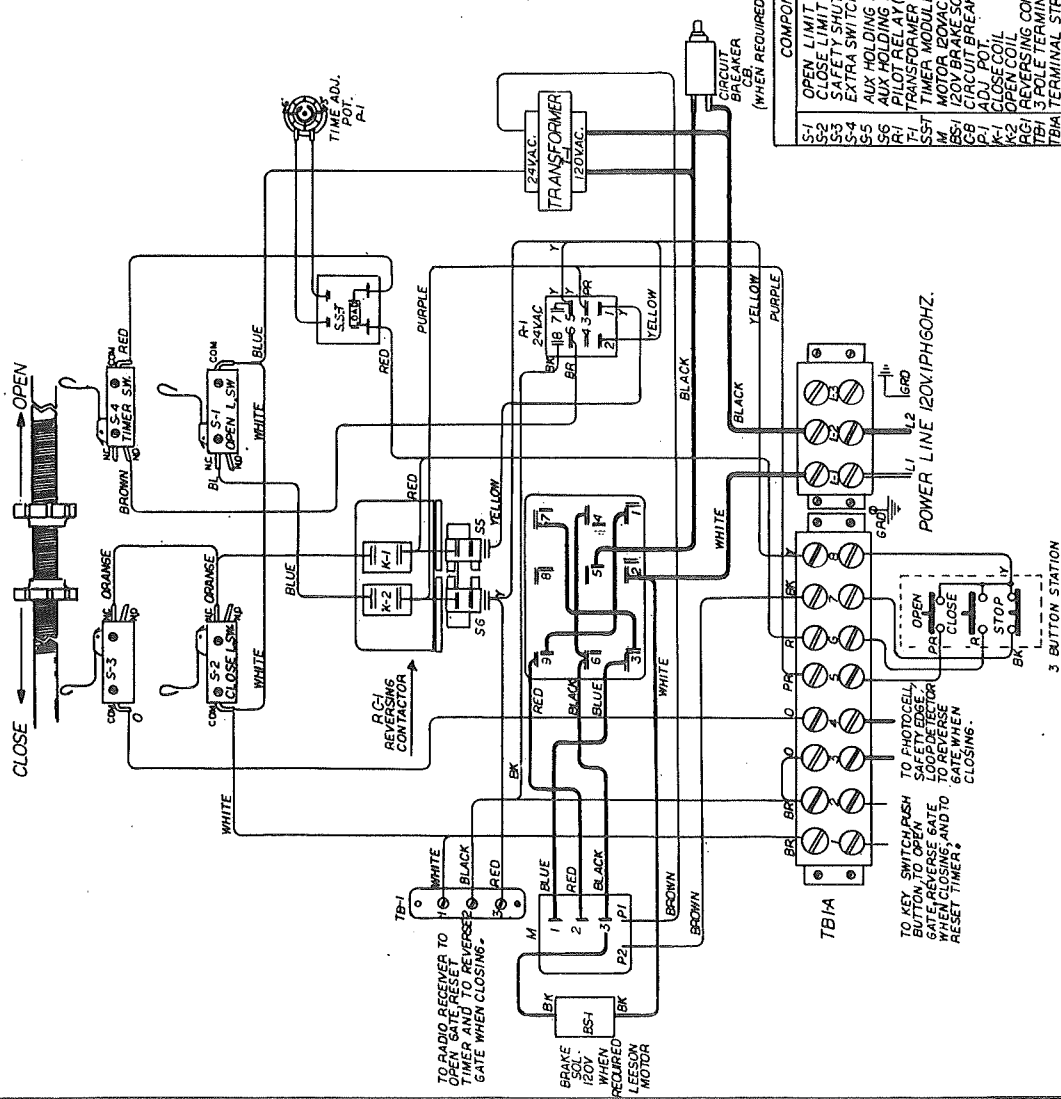


POWER LINE 120V/1PH 60HZ.



LOW VOLTAGE SHUT OFF SWITCH (WHEN USED)

- COMPONENT LIST**
- S-1 OPEN LIMIT SWITCH SPDT.
  - S-2 CLOSE LIMIT SWITCH SPDT.
  - S-3 SAFETY SHUT OFF SWITCH SPDT.
  - S-4 EXTRA SWITCH TO ACTIVATE TIMER.
  - S-5 AUX HOLDING SWITCH (CLOSE SIDE).
  - S-6 AUX HOLDING SWITCH (OPEN SIDE).
  - R-1 PILOT RELAY (REVERSING) 24VAC-DPDT.
  - T-1 TRANSFORMER 20VAC TO 24VAC-25VA.
  - M MOTOR 120VAC LEESON
  - BS-1 120V BRAKE SOLENOID
  - P-1 120V POT
  - P-2 120V POT
  - K-1 CLOSE COIL
  - K-2 OPEN COIL
  - R-G/ REVERSING CONTACTOR 24V COIL
  - TB/A 3 POLE TERMINAL STRIP
  - TB/B 3 POLE TERMINAL STRIP CONTROL WIRING
  - S-7 120V LOW VOLTAGE SHUT OFF SWITCH



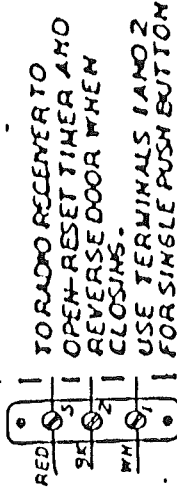
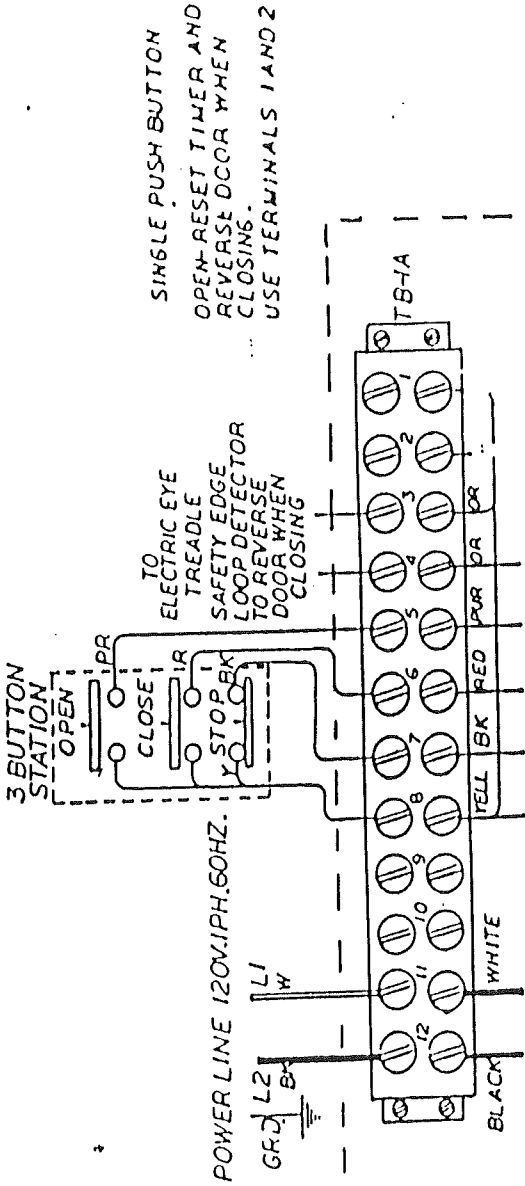
TO RADIO RECEIVER TO OPEN GATE, RESET TIMER AND TO REVERSE GATE WHEN CLOSING.

POWER LINE 120V/1PH 60HZ.

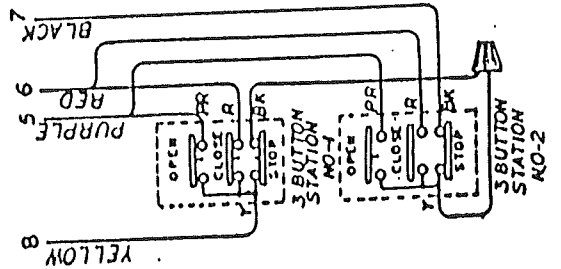
TO KEY SWITCH, PUSH BUTTON TO OPEN GATE, RESET TIMER, AND TO REVERSE GATE WHEN CLOSING.

3 BUTTON STATION

NAPOLION LYNX CO. PAT. NO.	
WIRING SCHEMATIC DIAGRAM	
MODEL 2410 120V/60HZ/1PH	
DATE	7-8-53
REV.	700088



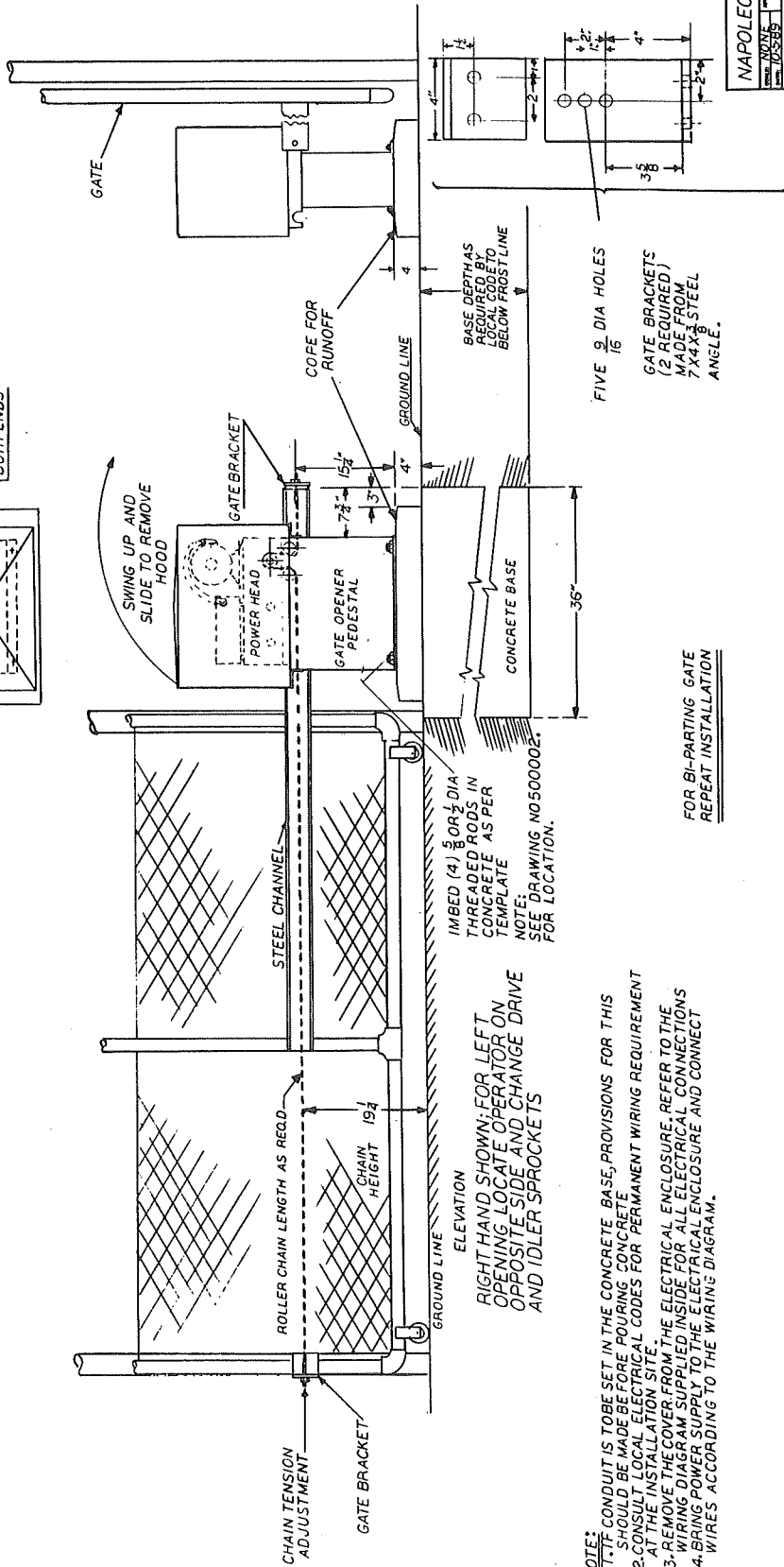
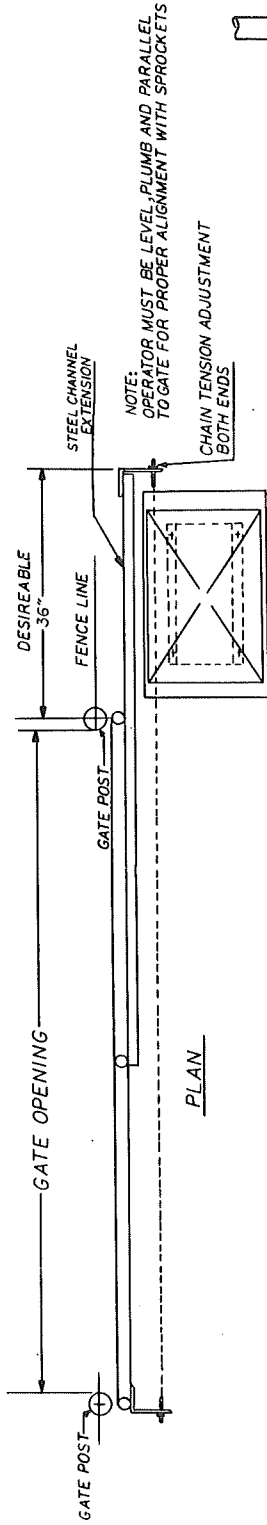
# CONTROL BOX



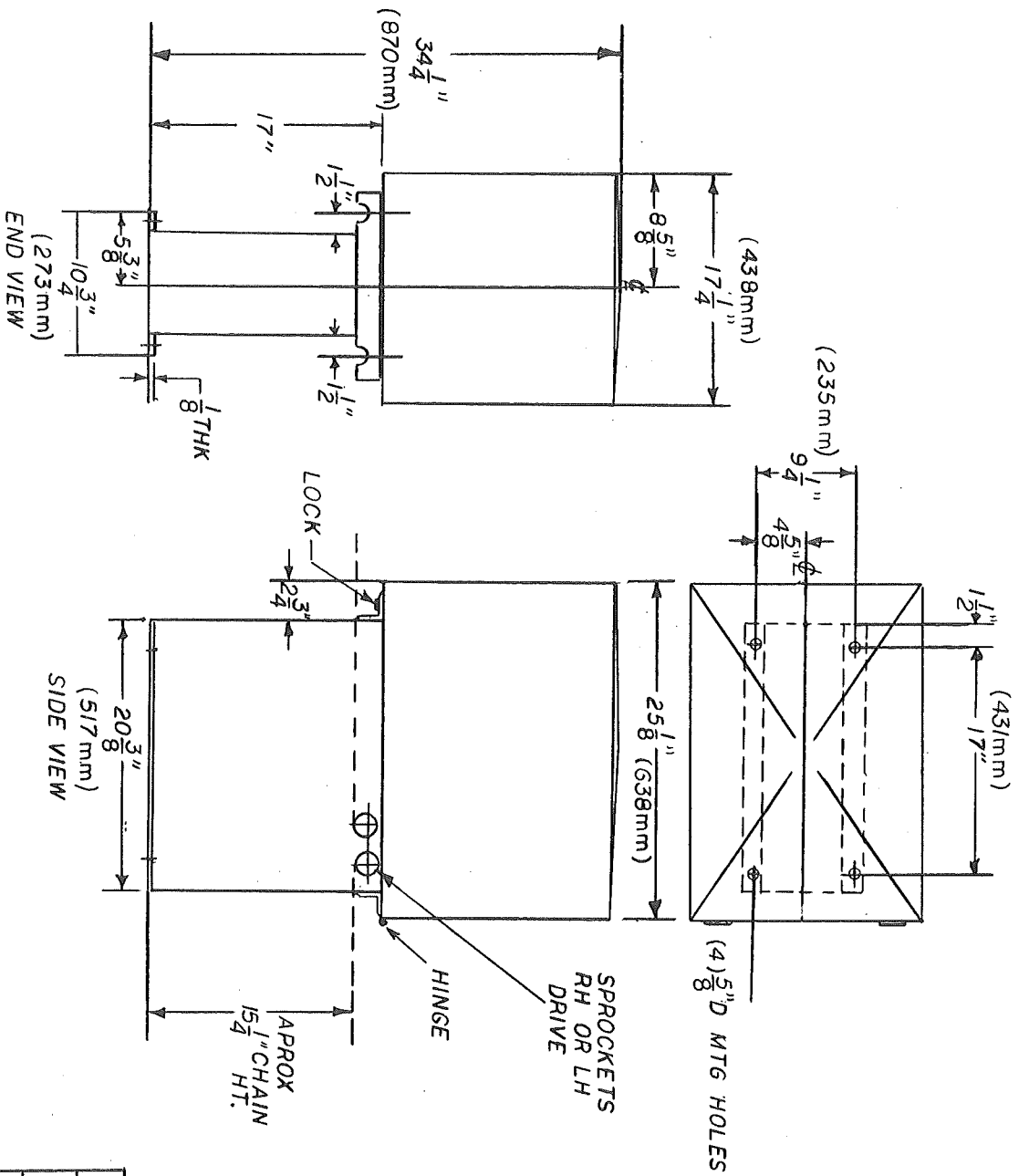
TOLERANCES (EXCEPT AS NOTED)		REVISIONS	
DECIMAL	±	NO.	DATE
		1	
		2	
		3	
		4	
		5	
FRACTIONAL	±	DRAWN BY M G	
ANGULAR	±	CHKD	DATE 5-16-89
		TRACED	APP'D

MODEL AHGO GATE OPENER  
 DIAGRAM FOR RADIO AND  
 3 BUTTON STATION.

MATERIAL  
 3-5-89  
 DRAWING NO.  
 1-1-89

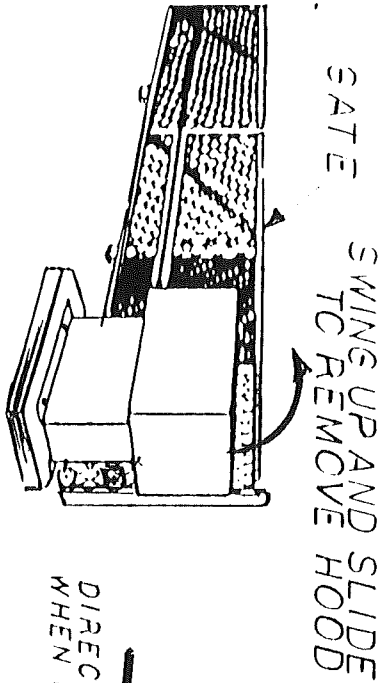


NAPOLÉON LYNX CO. PAT. N.L.  
 MODEL 105285  
 17Z 600007  
 SLIDE GATE OPERATOR AHGO  
 INSTALLATION DRAWING 7000036

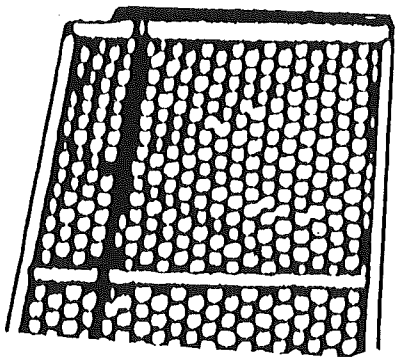


LYNX USA 25 MCLEAN BLVD., PATERSON N.J.	
MODEL AHGO.	
DRN. M/G	DATE 1-289
APPD. M/G	REV. A
5000002	

GATE POSITION



↓  
DIRECTION OF GATE  
WHEN CLOSING



1.1.0 LEFT SIDE MOUNTING