

# LX100 FIELD WIRING DIAGRAM

## LX-100 Wiring Connections

**\*\*Stop and Com must be jumpered when a 3-Button Wall Station is Present**



Rev.  
09/11/15

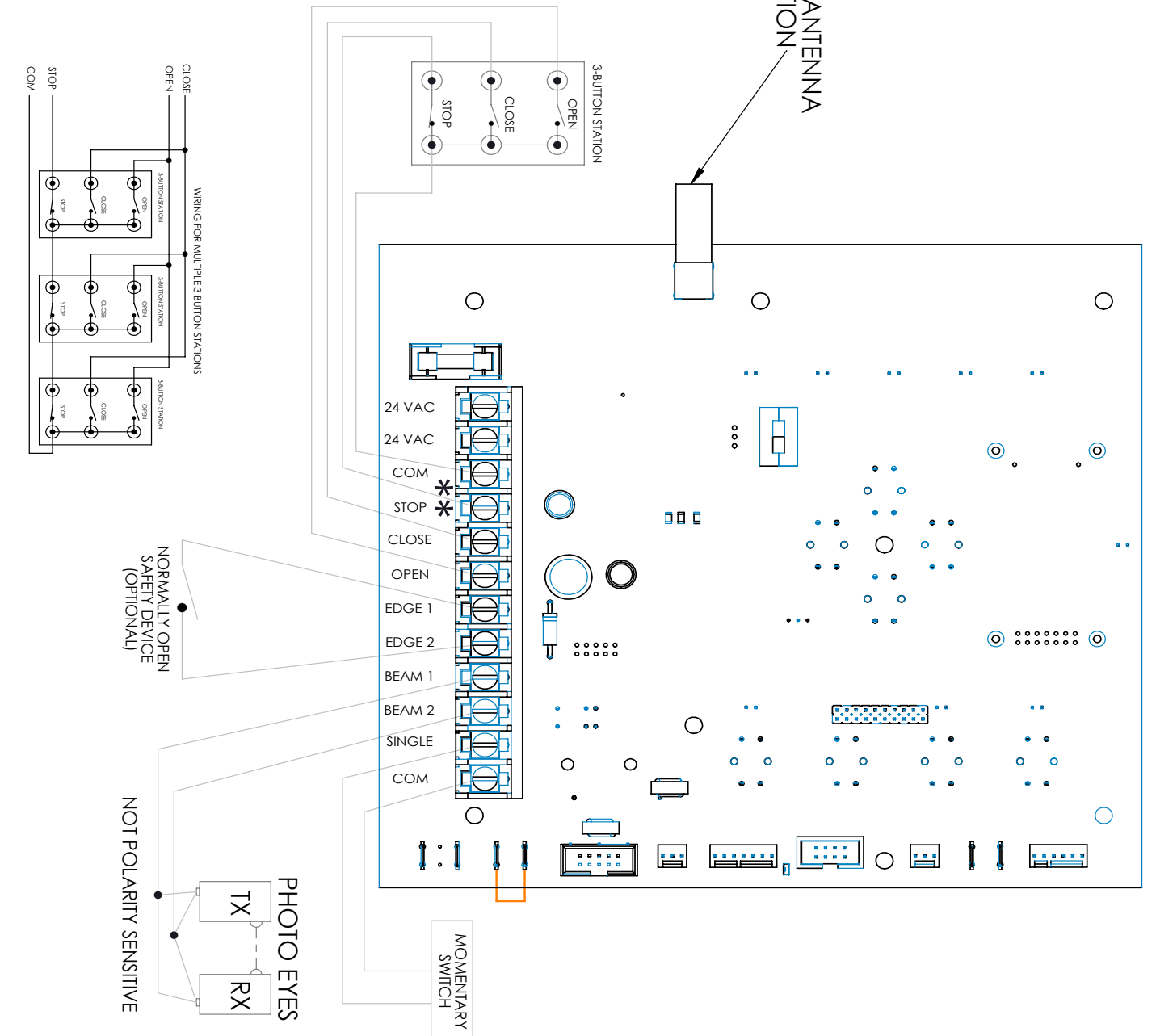


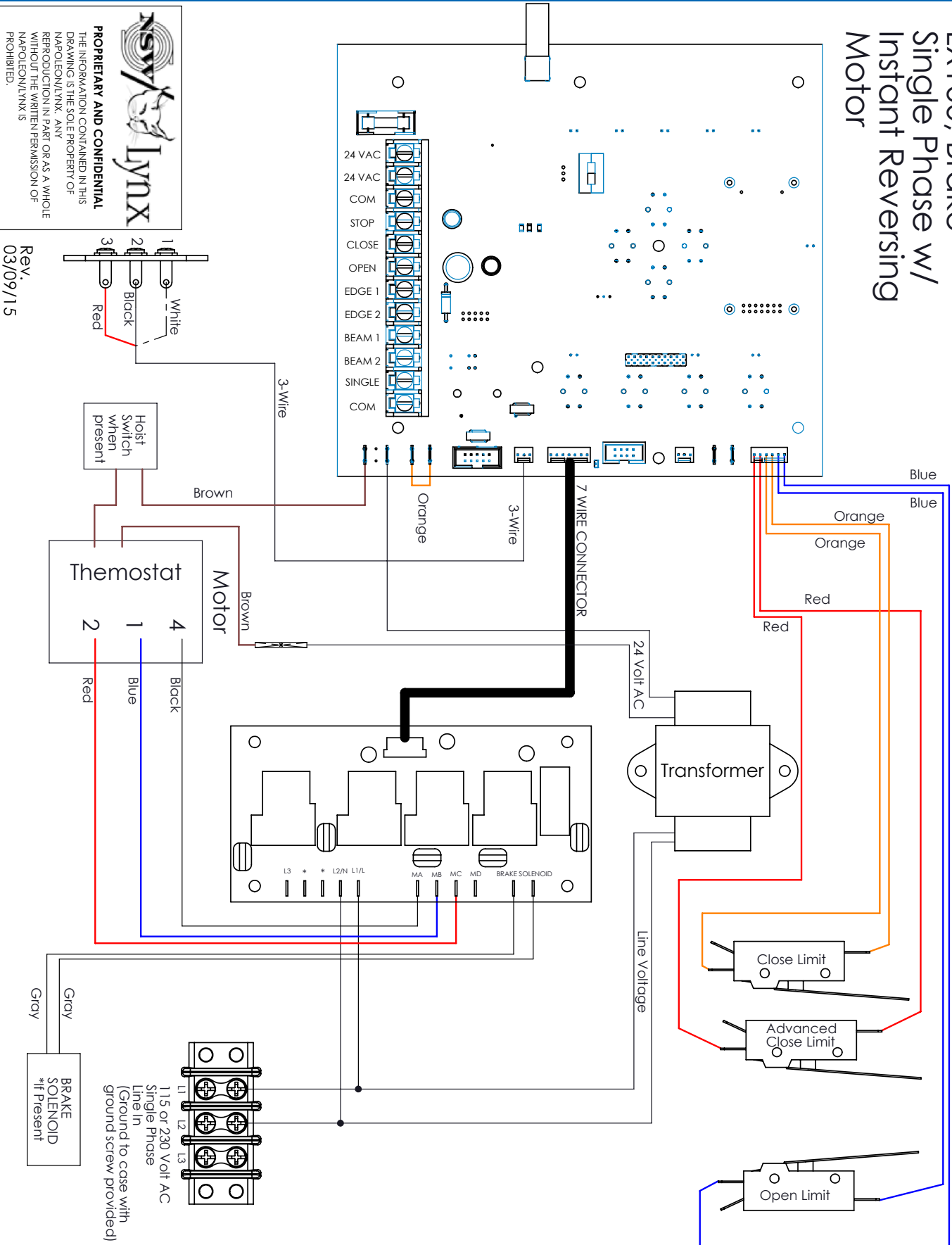
FIGURE 10

# WIRING DIAGRAM

LX100, Brake  
Single Phase w/  
Instant Reversing  
Motor

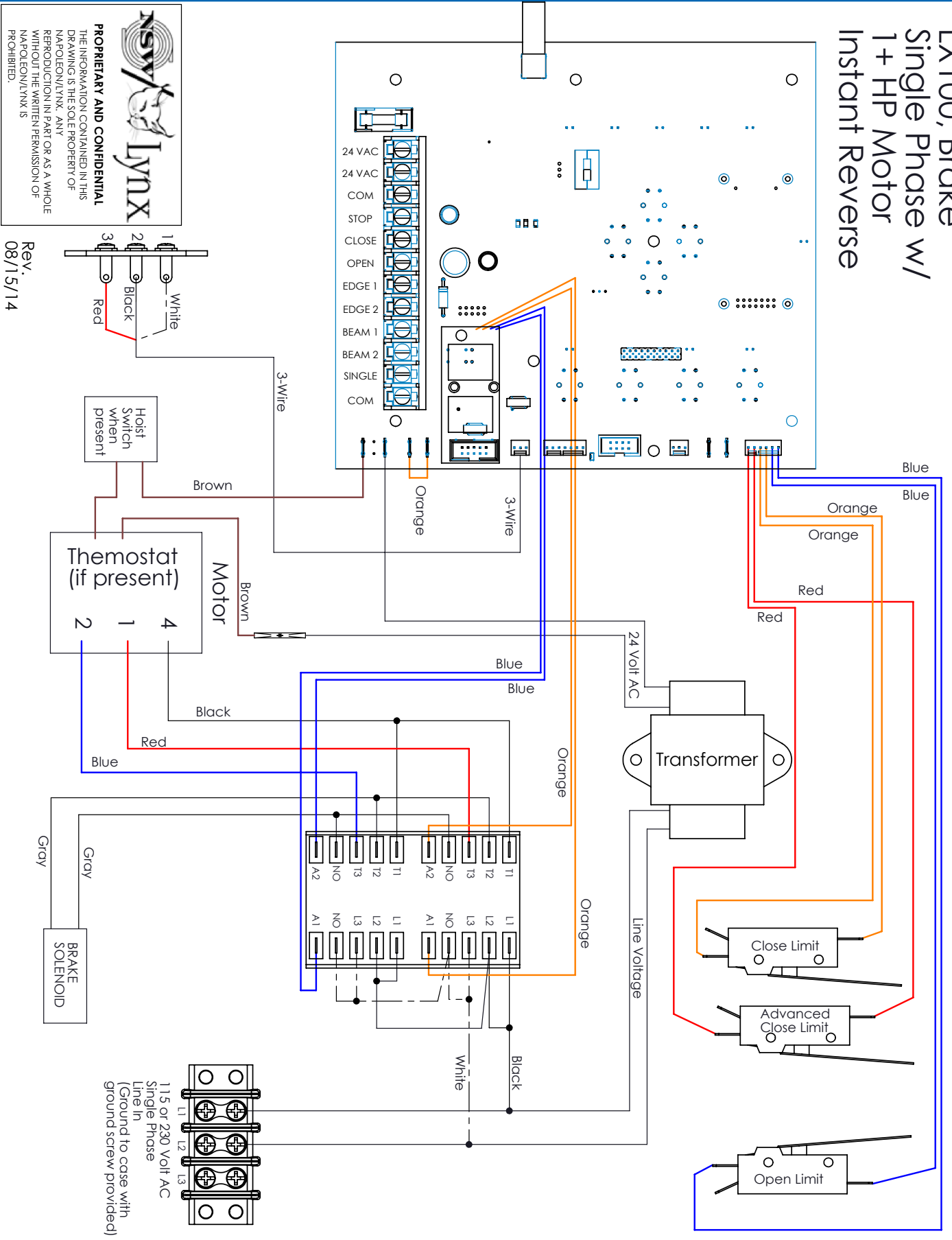
**NSV/LYNX**  
**PROPRIETARY AND CONFIDENTIAL**  
 THE INFORMATION CONTAINED IN THIS DRAWING IS THE SOLE PROPERTY OF NAPOLEON/LYNX. ANY REPRODUCTION IN PART OR AS A WHOLE WITHOUT THE WRITTEN PERMISSION OF NAPOLEON/LYNX IS PROHIBITED.

Rev. 03/09/15

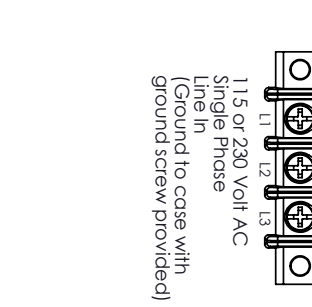
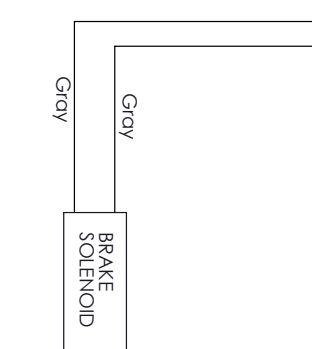
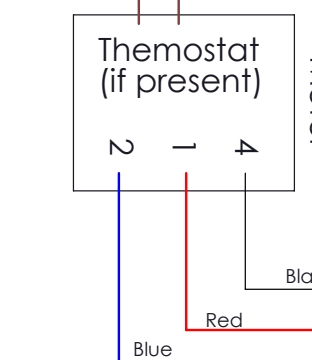
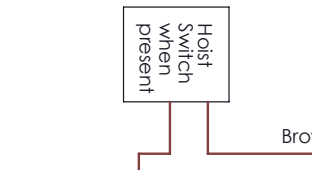
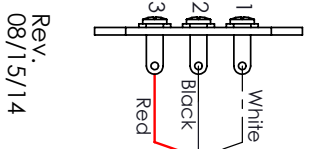


# WIRING DIAGRAM

LX100, Brake  
Single Phase w/  
1+ HP Motor  
Instant Reverse

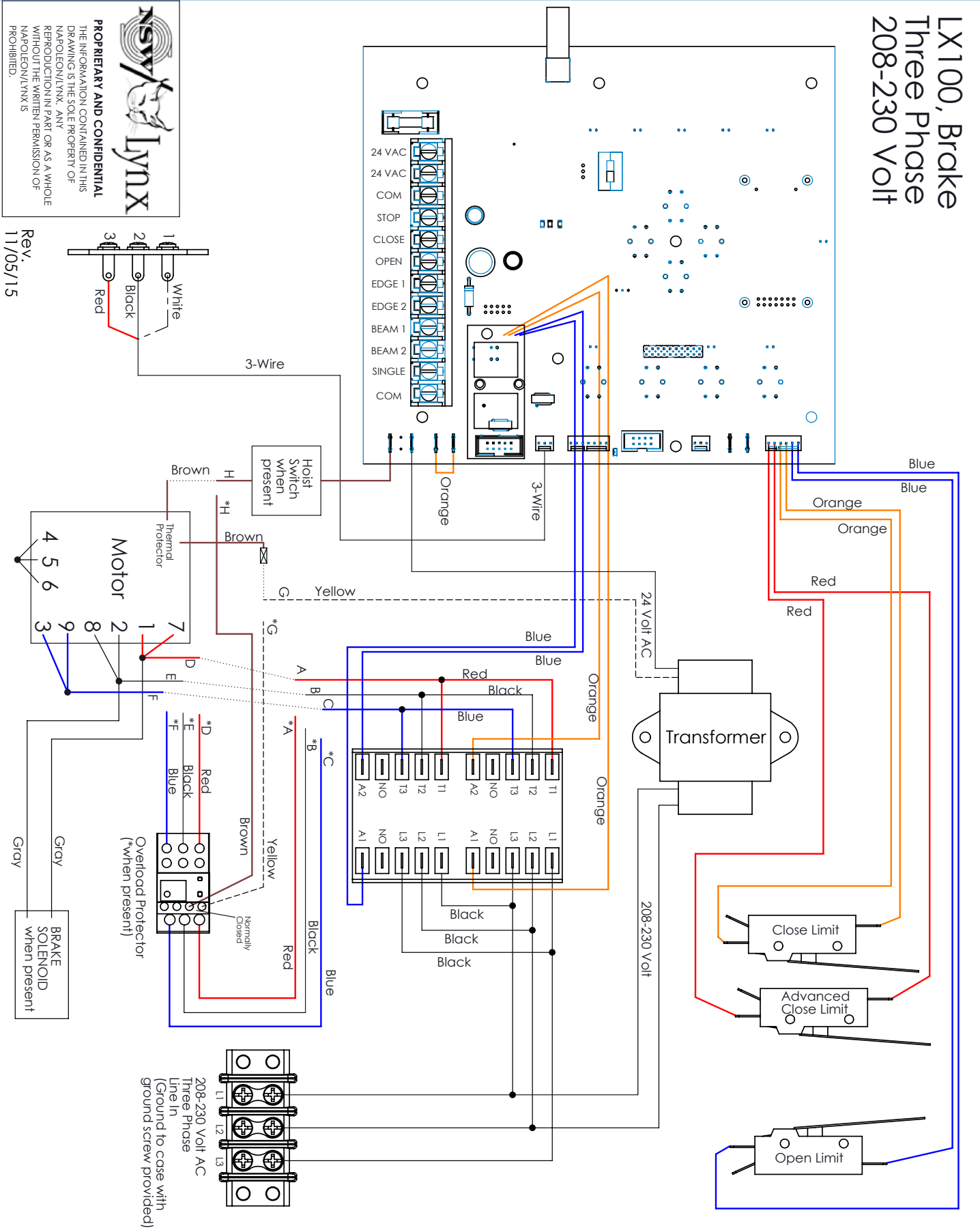


**NSV/ Lynx**  
**PROPRIETARY AND CONFIDENTIAL**  
 THE INFORMATION CONTAINED IN THIS DRAWING IS THE SOLE PROPERTY OF NAPOLEON/LYNX. ANY REPRODUCTION IN PART OR AS A WHOLE WITHOUT THE WRITTEN PERMISSION OF NAPOLEON/LYNX IS PROHIBITED.



# WIRING DIAGRAM

LX100, Brake  
Three Phase  
208-230 Volt



**NSV/LYNX**  
 PROPRIETARY AND CONFIDENTIAL  
 THE INFORMATION CONTAINED IN THIS DRAWING IS THE SOLE PROPERTY OF NAPOLEON/LYNX. ANY REPRODUCTION IN PART OR AS A WHOLE WITHOUT THE WRITTEN PERMISSION OF NAPOLEON/LYNX IS PROHIBITED.

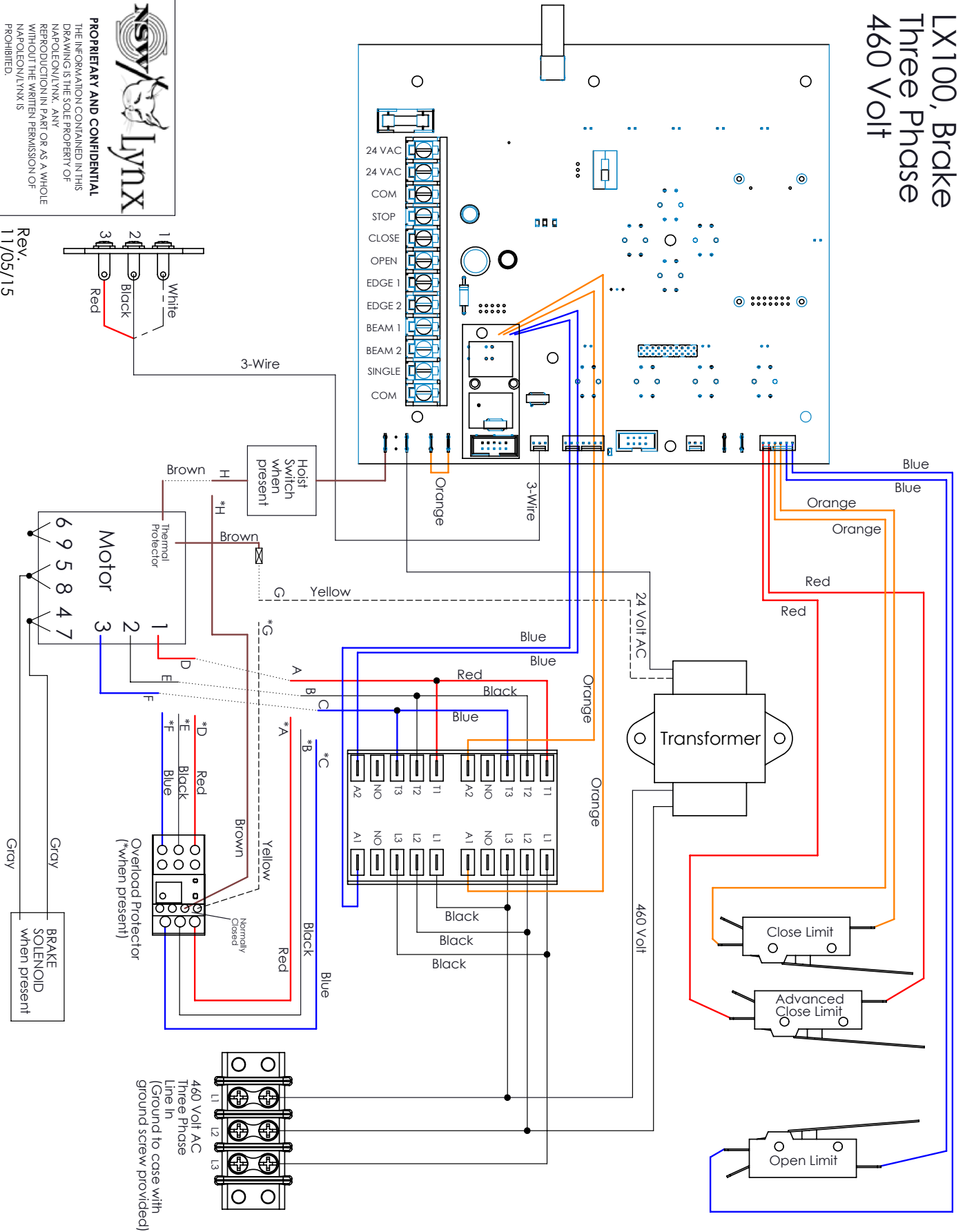
Rev.  
11/05/15

# WIRING DIAGRAM

LX100, Brake  
Three Phase  
460 Volt

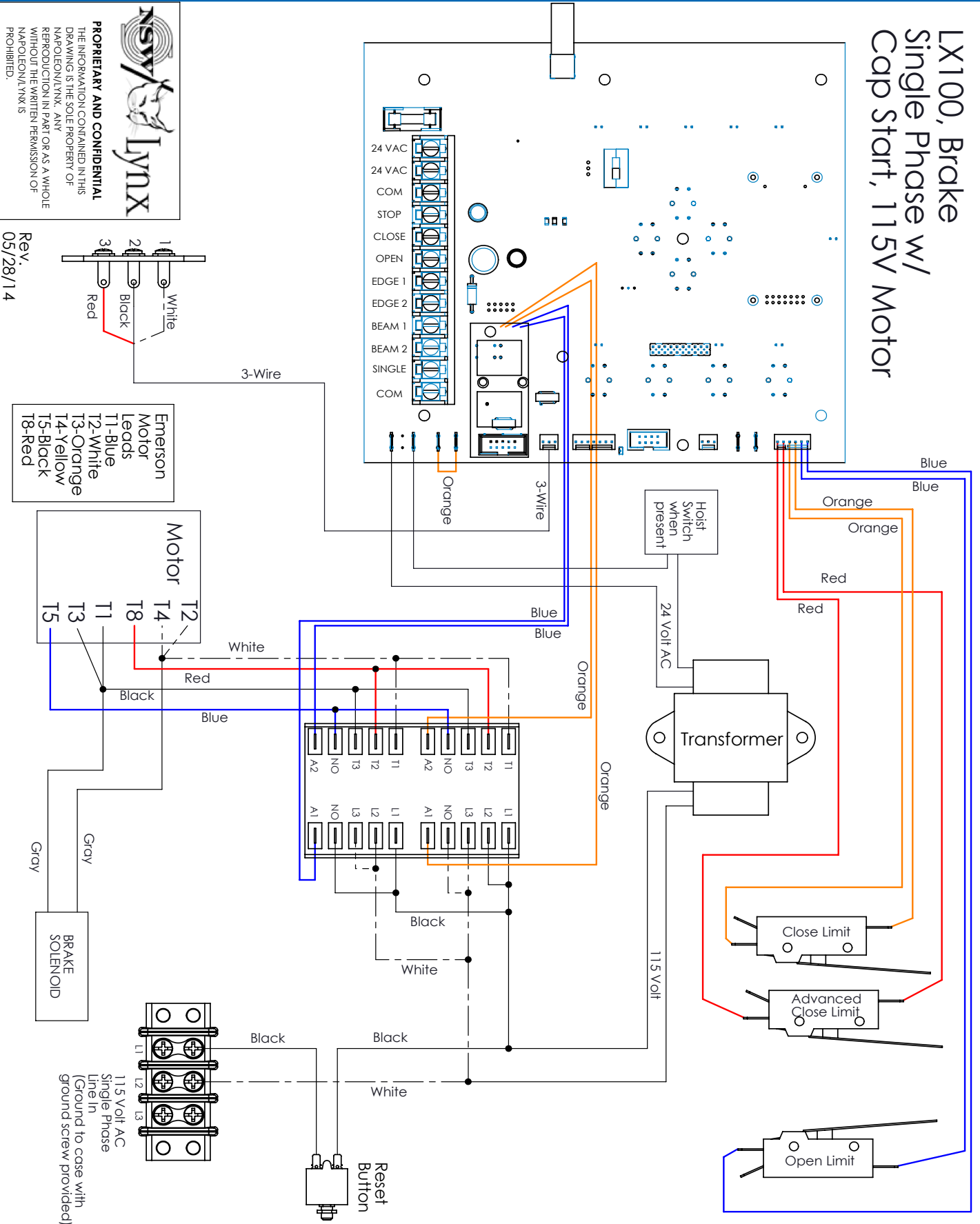
**NSV/LYNX**  
 PROPRIETARY AND CONFIDENTIAL  
 THE INFORMATION CONTAINED IN THIS  
 DRAWING IS THE SOLE PROPERTY OF  
 NAPOLEON/LYNX. ANY  
 REPRODUCTION IN PART OR AS A WHOLE  
 WITHOUT THE WRITTEN PERMISSION OF  
 NAPOLEON/LYNX IS  
 PROHIBITED.

Rev.  
11/05/15

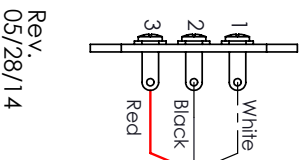


# WIRING DIAGRAM

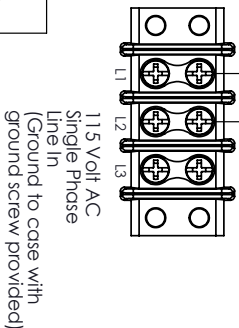
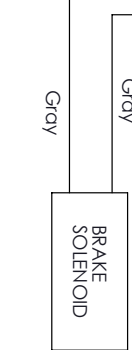
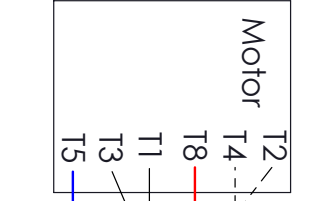
LX100, Brake  
Single Phase w/  
Cap Start, 115V Motor



**NSV/LYNX**  
**PROPRIETARY AND CONFIDENTIAL**  
 THE INFORMATION CONTAINED IN THIS DRAWING IS THE SOLE PROPERTY OF NAPOLEON/LYNX. ANY REPRODUCTION IN PART OR AS A WHOLE WITHOUT THE WRITTEN PERMISSION OF NAPOLEON/LYNX IS PROHIBITED.



Emerson Motor Leads  
 T1-Blue  
 T2-White  
 T3-Orange  
 T4-Yellow  
 T5-Black  
 T8-Red

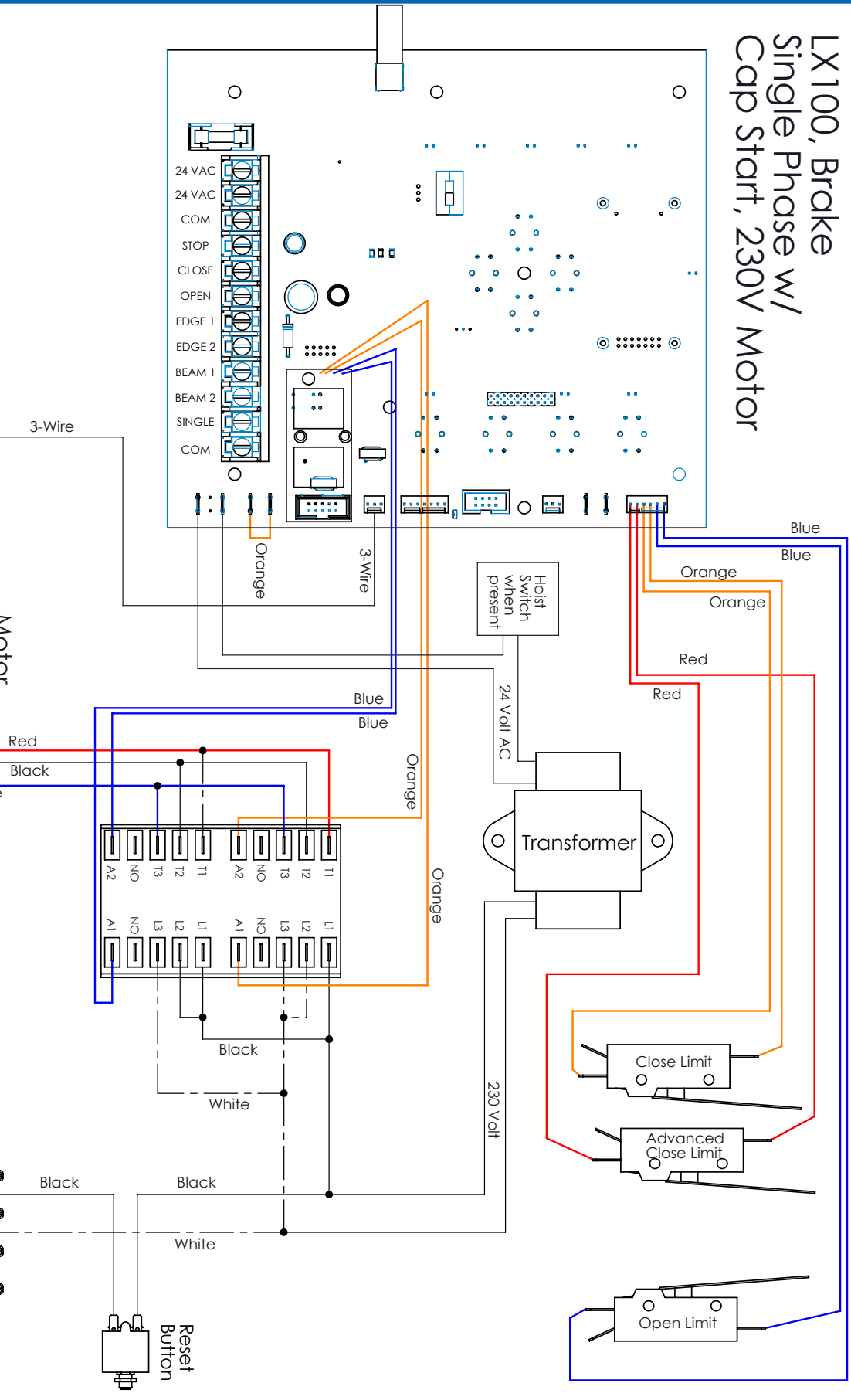
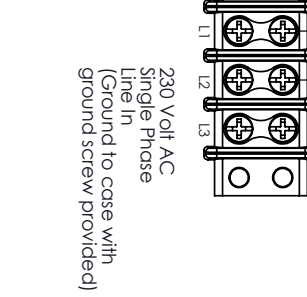
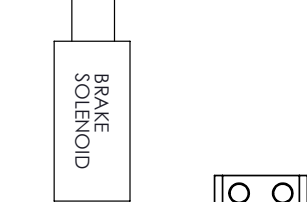
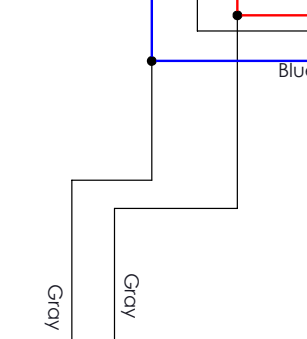
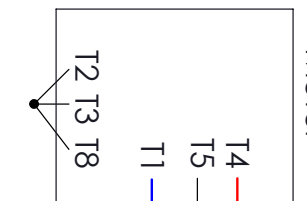
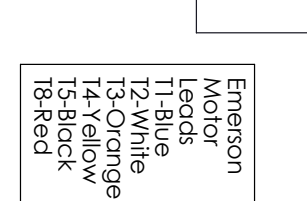
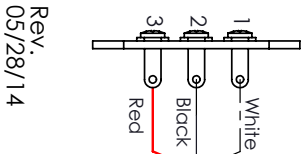


Rev. 05/28/14

# WIRING DIAGRAM

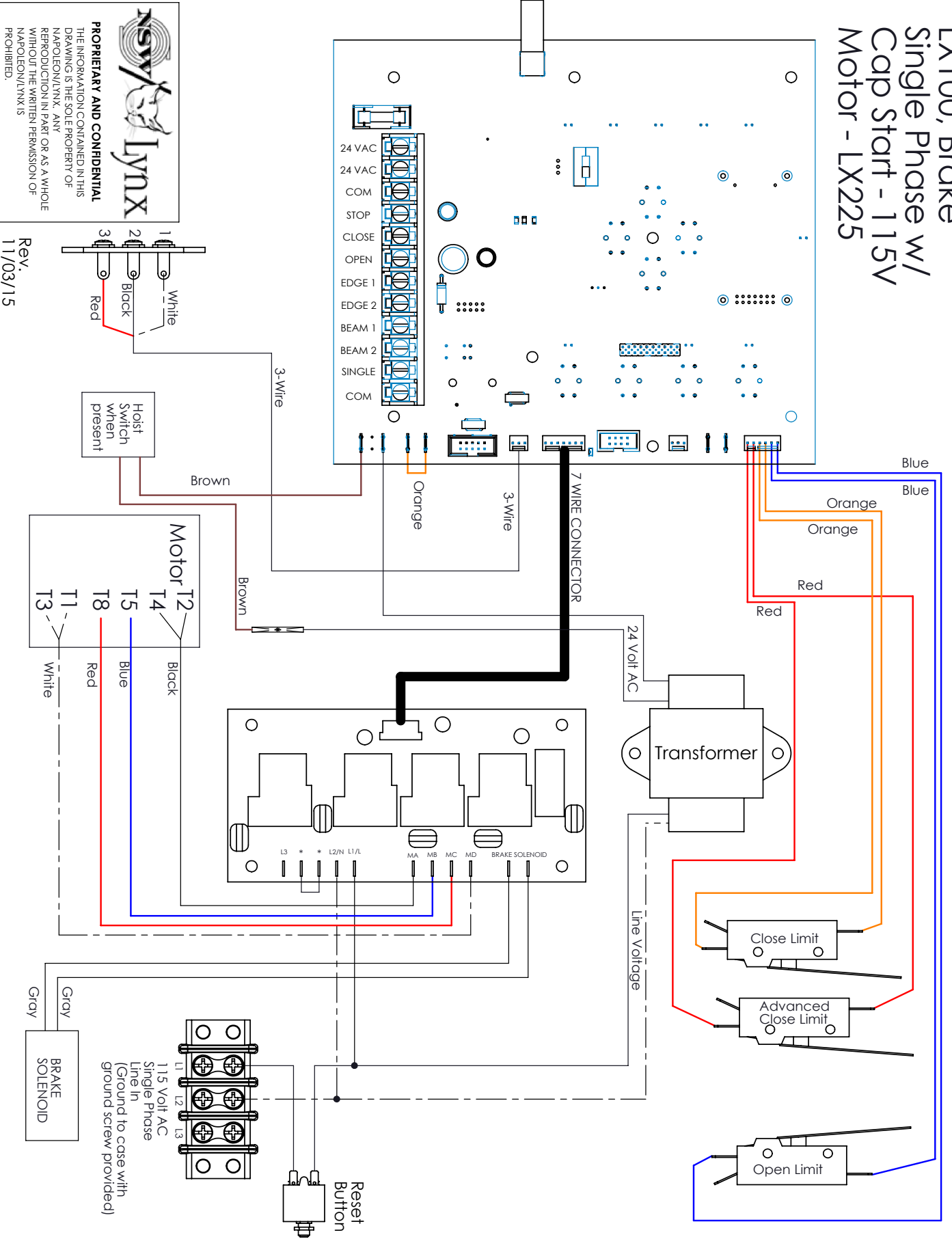
LX100, Brake  
Single Phase w/  
Cap Start, 230V Motor

**NSV/LYNX**  
**PROPRIETARY AND CONFIDENTIAL**  
 THE INFORMATION CONTAINED IN THIS  
 DRAWING IS THE SOLE PROPERTY OF  
 NAPOLEON/LYNX. ANY  
 REPRODUCTION IN PART OR AS A WHOLE  
 WITHOUT THE WRITTEN PERMISSION OF  
 NAPOLEON/LYNX IS  
 PROHIBITED.



# WIRING DIAGRAM

LX100, Brake  
Single Phase w/  
Cap Start - 115V  
Motor - LX225



**NSV/ Lynx**  
**PROPRIETARY AND CONFIDENTIAL**  
 THE INFORMATION CONTAINED IN THIS DRAWING IS THE SOLE PROPERTY OF NAPOLEON/LYNX. ANY REPRODUCTION IN PART OR AS A WHOLE WITHOUT THE WRITTEN PERMISSION OF NAPOLEON/LYNX IS PROHIBITED.

Rev. 11/03/15  
 1 White  
 2 Black  
 3 Red

3-Wire  
 Brown  
 Orange  
 3-Wire

Motor  
 T2  
 T4  
 T5  
 T8  
 T11  
 T3

Black  
 Blue  
 Red  
 White

L3 \* \* L2/N L1/L  
 MA MB MC MD  
 BRAKE SOLENOID

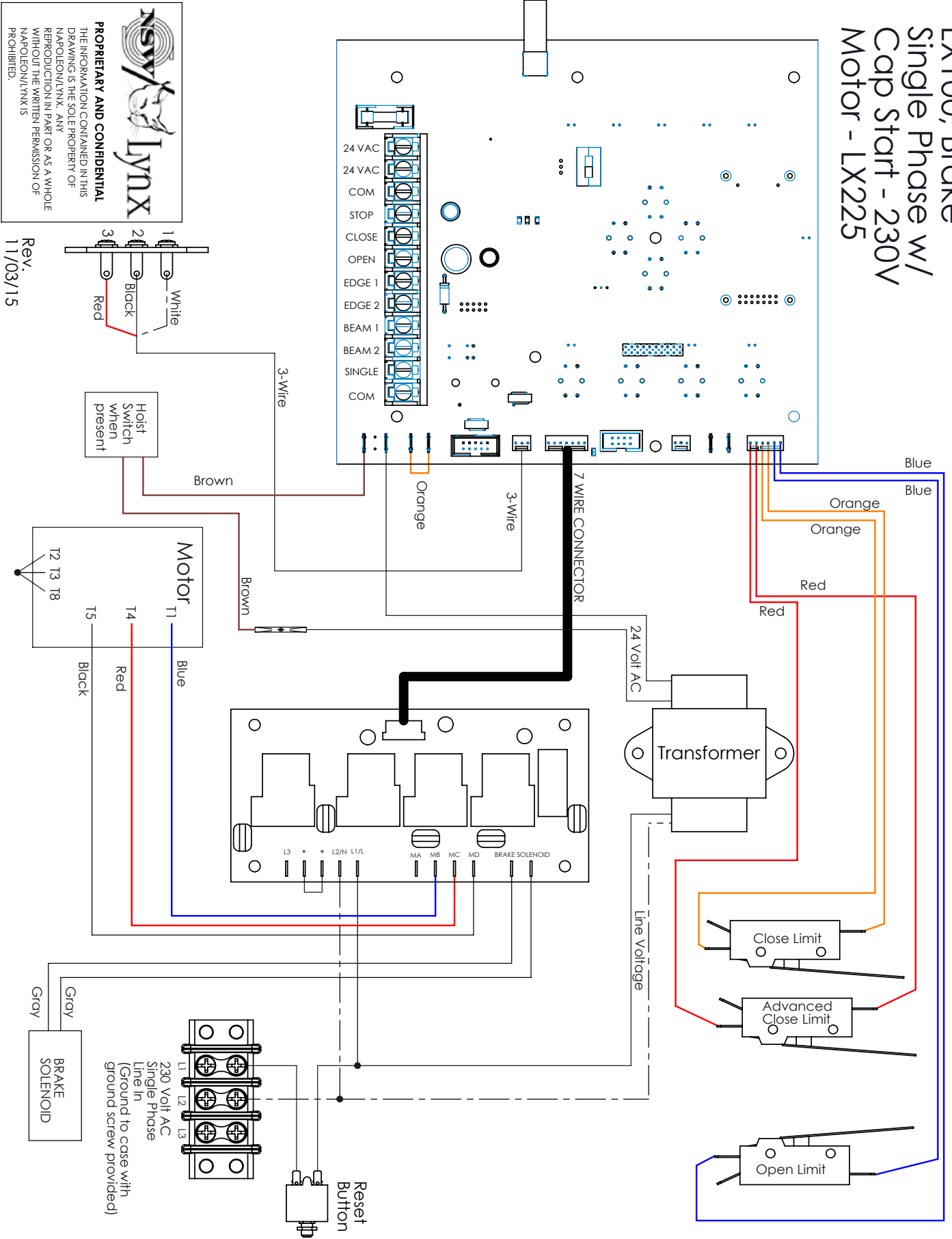
115 Volt AC  
 Single Phase  
 Line In  
 (Ground to case with ground screw provided)

Gray  
 BRAKE SOLENOID  
 Reset Button



# WIRING DIAGRAM

LX100, Brake  
Single Phase w/  
Cap Start - 230V  
Motor - LX225



**NSV/LYNX**  
**PROPRIETARY AND CONFIDENTIAL**  
 THE INFORMATION CONTAINED IN THIS DRAWING IS THE SOLE PROPERTY OF NAPOLEON/LYNX. ANY REPRODUCTION IN PART OR AS A WHOLE WITHOUT THE WRITTEN PERMISSION OF NAPOLEON/LYNX IS PROHIBITED.

Rev. 11/03/15  
 1 White  
 2 Black  
 3 Red

Hoist Switch when present

3-Wire  
 Brown

7 WIRE CONNECTOR

24 Volt AC

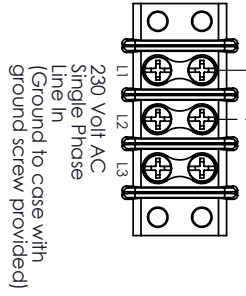
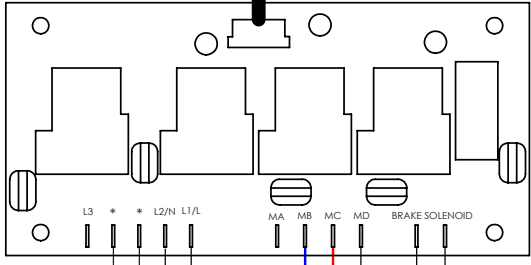
Transformer

Line Voltage

Close Limit

Advanced Close Limit

Open Limit



Reset Button

Gray  
 BRAKE SOLENOID

# SHOP DRAWING

