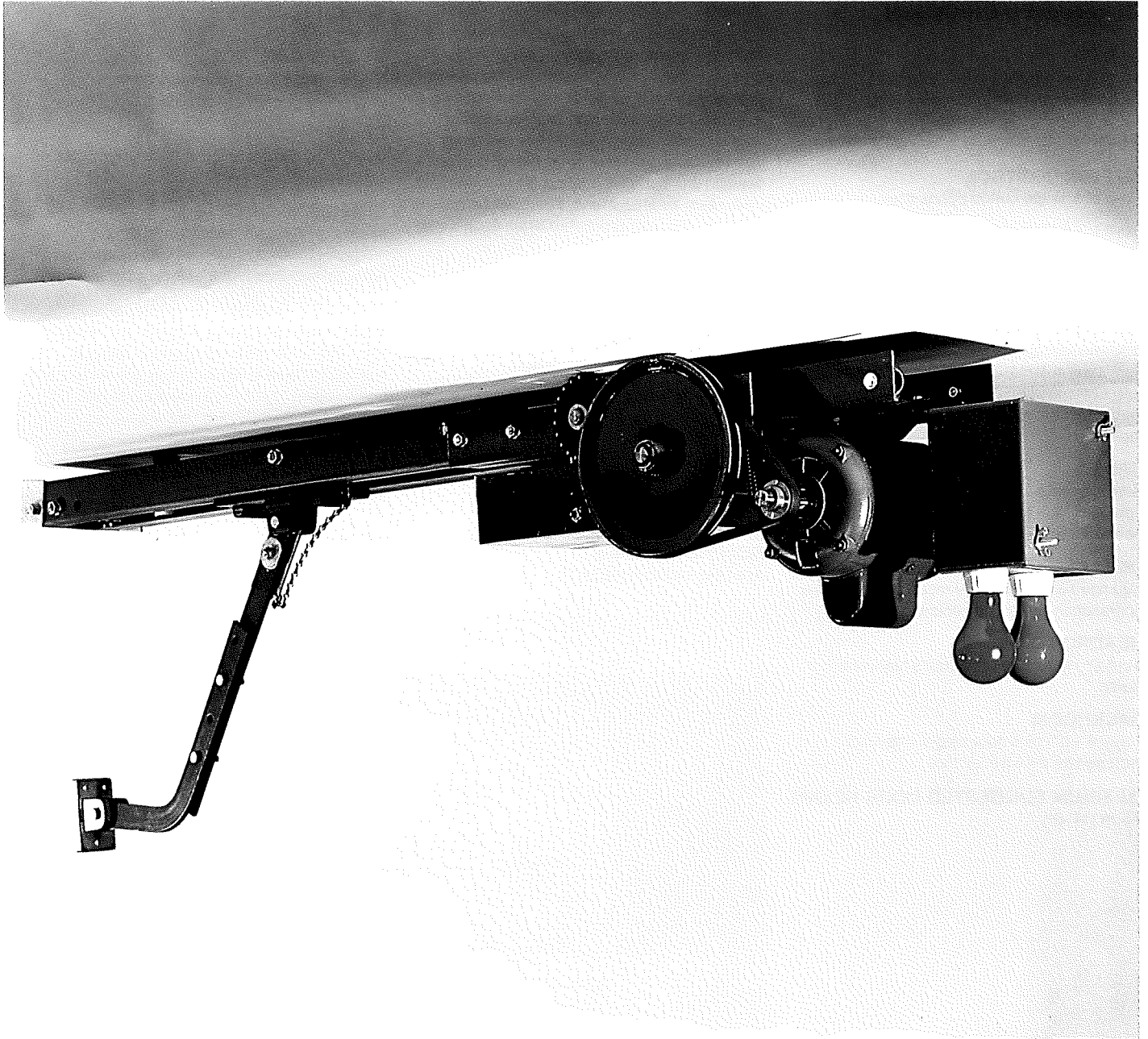

**MODEL AMRA-T
TROLLEY TYPE APARTMENT HOUSE OPERATOR**



Sold By:



MODEL AMRA-T TROLLEY TYPE APARTMENT HOUSE OPERATOR

GENERAL INFORMATION

MOTOR

1/3 H.P., or 1/2 H.P. 115 – 230 volts, 1 phase capacitor start. Instant reverse.
1/2 or 3/4 H.P., 230 – 460 or 575 volts, 3 phase. All with overload and undervoltage protection.

BUTTON CONTROL

Push of a single button opens door.

LIMIT SWITCHES

Oil impregnated screw type cams and precision type microswitches for both up and down positions. They are easily adjusted without tools.

AUTOMATIC REVERSE

If downward traveling door meets an obstruction, it will automatically reverse and stop at fully open position. This built-in, reversing, load-sensing device is easily adjusted without tools.

DRIVE

Belt and chain for efficient long lasting quiet operation. Traveling carriage slides on dual heavy-angle tracks with #65 chain drive.

DISCONNECT DEVICE

Equipped with a quick release arm for manual operation in case of power failure.

HEADROOM

5 cm (2") minimum from door's highest arc of travel.

BACKROOM

1.3 m (4' - 2") plus door height with timer mounted as shown in picture.

MAXIMUM SUGGESTED DOOR HEIGHT

4.3 m (14' - 0").

TIMER

If door is closed, push of button starts door up and turns green light on for preset time 0-5 minutes. At the end of the preset time, the red light is turned on for 15 seconds and then door closes automatically. If button is pressed when door is traveling downward, it will reverse to open position and reset timer. If door is in open position and button is pushed, timer is automatically reset for preset time. There will be no response if button is pressed when door is traveling upward.

OPTIONAL

REVERSE MOUNT

Only 63.5 cm (2') plus door height.

SLOW SPEED

Incorporates a double reduction system to reduce the speed of the operator on solid pivot type doors.

THREE BUTTON CONTROL

Available on Model MCA-T.

SOLENOID BRAKE

Available on Model MCA-T.

SPECIFICATIONS

BUTTON CONTROL

Single. Heavy duty momentary contact type, 24 volts.

RELAY

Heavy duty Struthers-Dunn reversing contactor or equal.

OPERATOR CHASSIS

Made from 5 cm x 5 cm x 3.2 mm (2" x 2" x 1/8") steel angles reinforced with a steel channel bracket bolted together for greater strength.

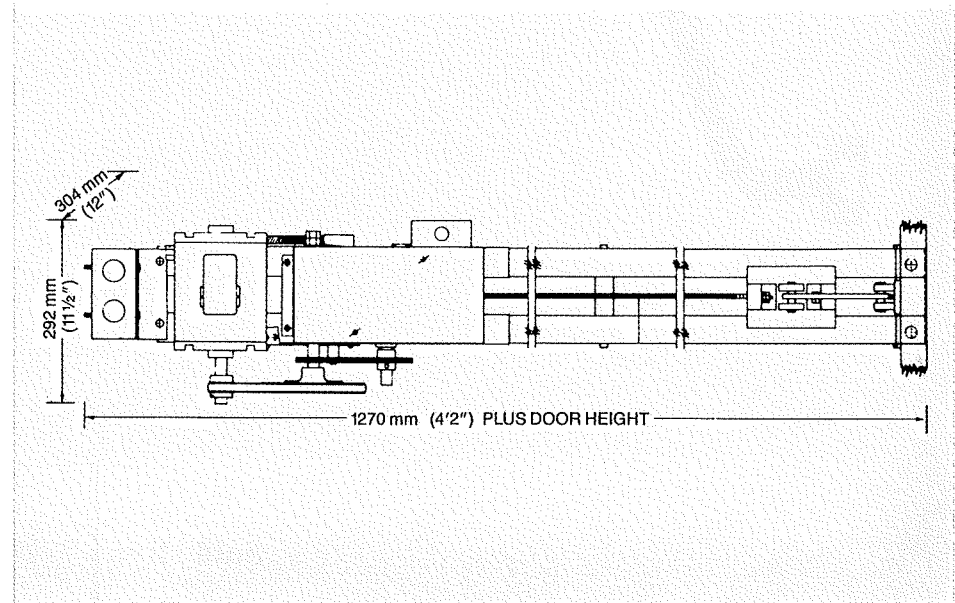
TROLLEY TRACK

Made from 5 cm x 5 cm x 3.2mm (2" x 2" x 1/8") steel angles. An idler riding on two flanged bearings affixed at center of rails prevents chain from rubbing together on doors 3.3 m (10' - 0") and over.

CONTROL BOX

Made from 1.27 mm (.050") steel with removable aluminum or steel cover.

Specifications subject to change without notice.



MODEL AMRA-T

TROLLEY TYPE APARTMENT HOUSE OPERATOR

Drawbar type opener designed for apartment house garage doors for use on high traffic sectional or solid pivot type doors. Equipped with terminal strip for radio control operation, single button control to open, close, reset, and reverse door when closing. Opener is shipped unassembled.
Shipping weight 95 lbs.

The model AMRA-T has a timing device which automatically closes the door after a preset time (0-5 min.), and automatically resets itself each time control is used or door is opened.

FEATURES

AUTOMATIC SAFETY REVERSE - This built-in reverse device is standard on all AMRA-T's. If the door is traveling downward and meets an obstruction, it will reverse to the open position.

AUXILIARY WIRING - Wired for an Auxiliary device to function as a safety control that will reset timer and reverse the door when activated during a closing cycle.
May be wired for radio control and push button to override timer.
May be used with horn and warning lights.

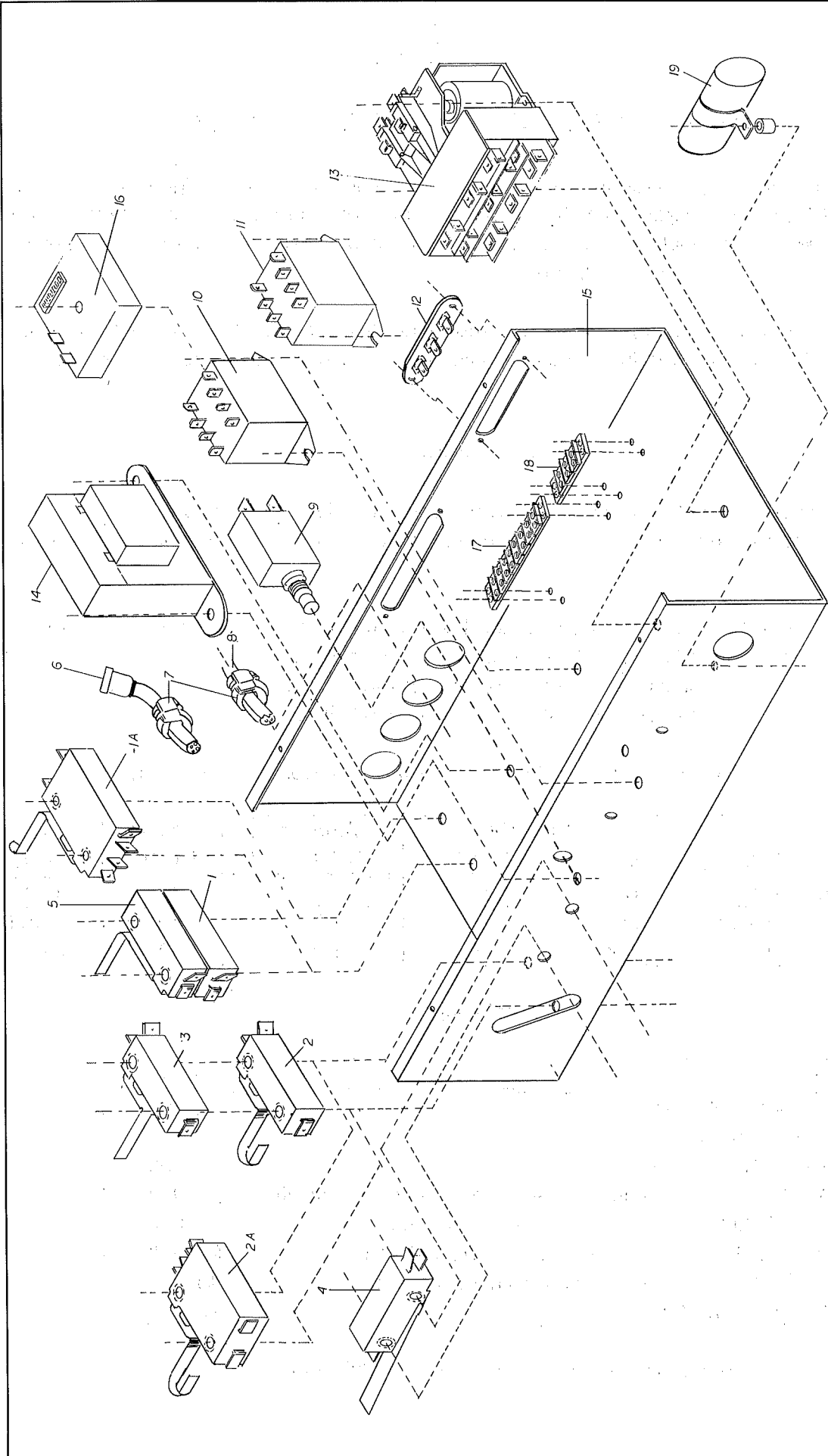
RADIO CONTROL - Pre-wired for radio control open cycle only.

MODEL	H.P.	VOLTAGE PHASE	MAXIMUM HEIGHT	MAXIMUM WEIGHT	LIST PRICE
AMRA-211	1/2	115/1	14'	590	
AMRA-T-211	1/2	115/1	14'	590	
AMRA-T-223	1/2	220/3	14'	590	

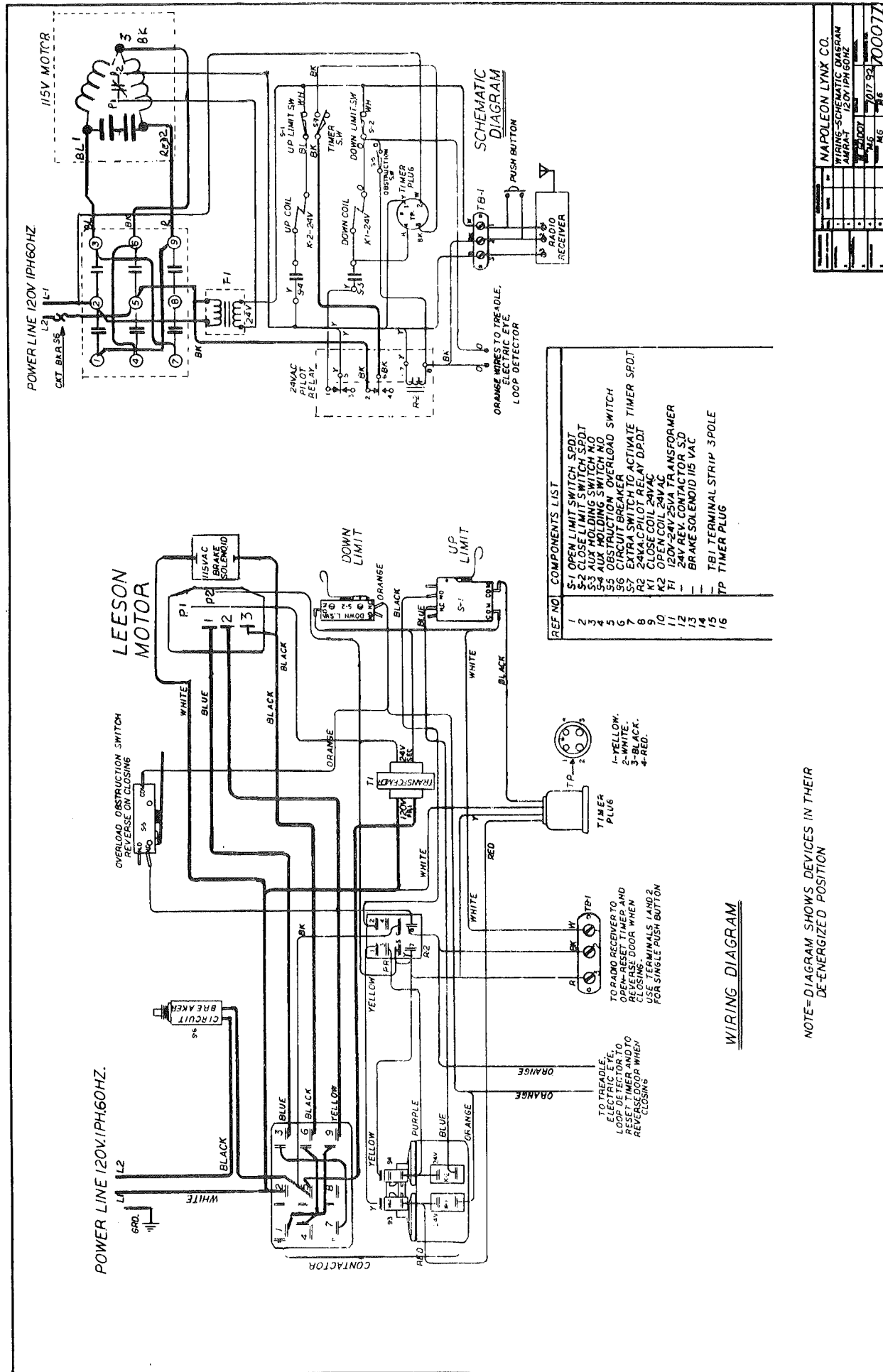
OPTIONS

OPTIONS	LIST
OVERRIDE TIMER TO CLOSE	
SOLENOID BRAKE	
ADJUSTABLE FRICTION CLUTCH	
REVERSE MOUNT For limited backroom; 2' plus door height	
SLOW SPEED For solid pivot doors up to 8'	
DOUBLE REDUCTION SLOW SPEED (7' DOOR ONLY)	
DOORS OVER 8' HIGH Add for each additional foot	
INTERMEDIATE STOP	

For entry/exit control devices see modifications page.

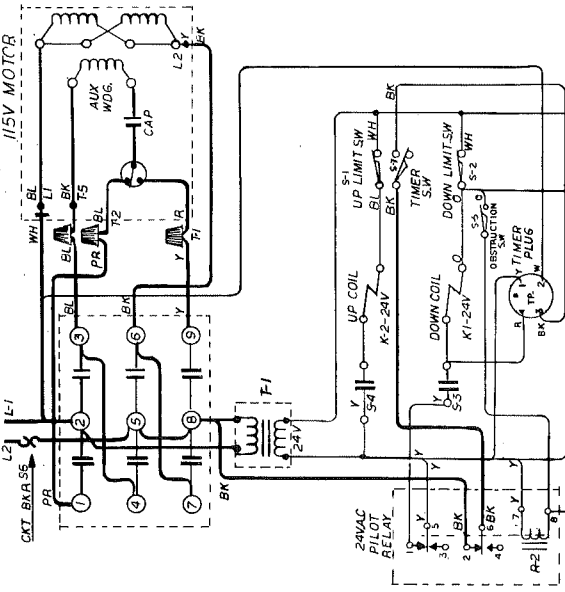


NAPOLEON LYNX CO. PAT. N.J.
 MODEL NO. 1125-94
 DATE 11/25/94
 DRAWN BY M. GODOY
 EXPLODED VIEW ELECTRICAL BOX MODELS
 ALDT-ATC3-AMCA-AMCA-T-AMB-AMRAITBC
 100094

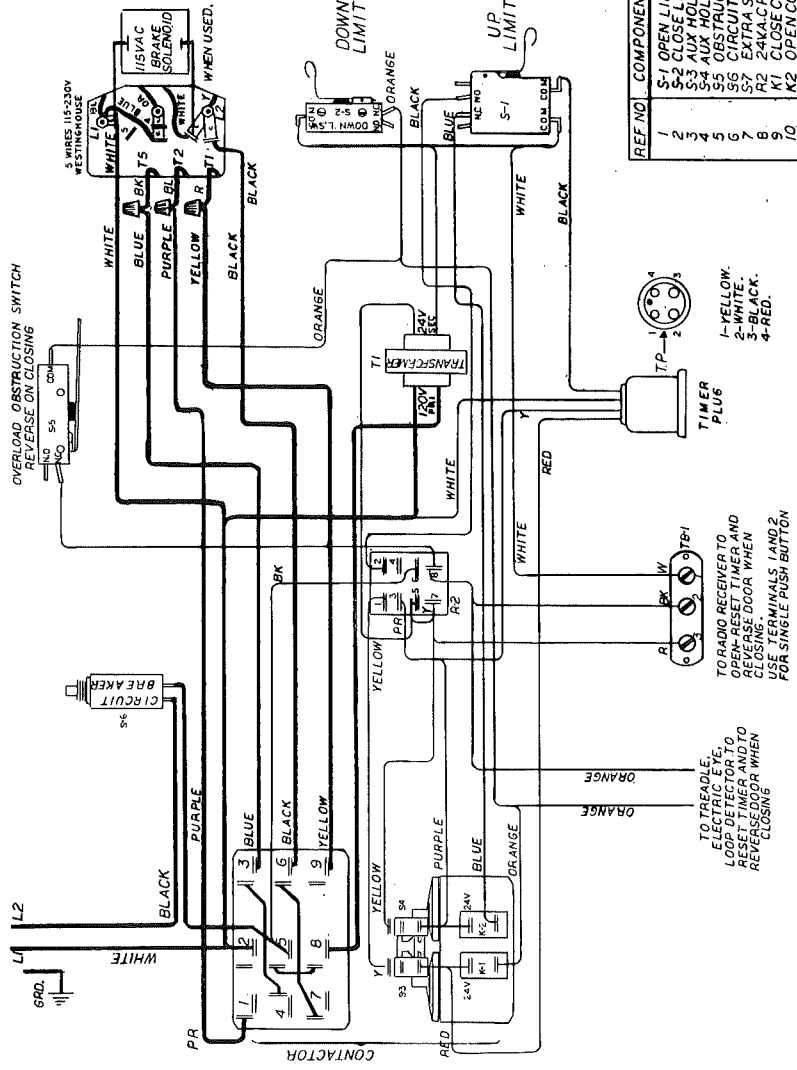


NAPOLEON LYNX CO.	
WIRING SCHEMATIC DIAGRAM	
120V 1PH 60HZ	
REV.	0007
DATE	10/17/54
BY	AG
NO.	700077

POWER LINE 120V 1PH60HZ.



POWER LINE 120V 1PH60HZ.



REF. NO. COMPONENTS LIST

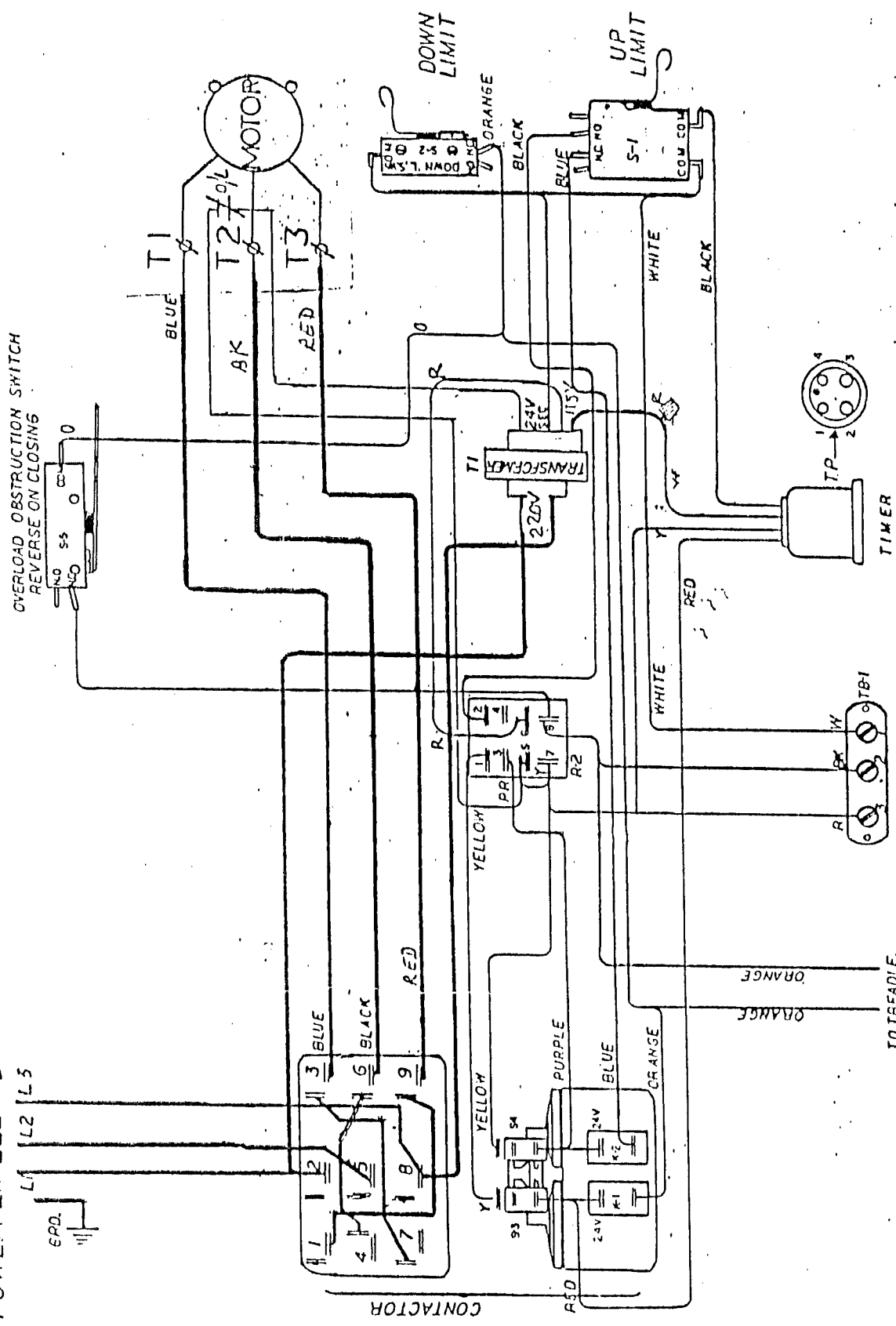
1	S-1 OPEN LIMIT SWITCH SPDT
2	S-2 CLOSE LIMIT SWITCH SPDT
3	S-3 AUX HOLDING SWITCH NO
4	S-4 AUX HOLDING SWITCH NO
5	S-5 OBSTRUCTION OVERLOAD SWITCH
6	S-6 CIRCUIT BREAKER
7	S-7 EXTRA SWITCH TO ACTIVATE TIMER SPDT
8	R-2 24VAC PILOT RELAY DPDT
9	K-2 CLOSE COIL 24VAC
10	K-1 120V-24V 25VA TRANSFORMER
11	T-1 24V REV. CONTACTOR S/D
12	— BRAKE SOLENOID 115 VAC
13	— WESTINGHOUSE MOTOR 327PG71 1A
14	— T-1 TERMINAL STRIP 3POLE
15	—
16	—

WIRING DIAGRAM

NOTE=DIAGRAM SHOWS DEVICES IN THEIR DE-ENERGIZED POSITION

NAPOLEON LYNX CO.	
WIRING-SCHMATIC DIAGRAM	
AM-FRAT 120V1PH 60HZ	
REV.	DATE
1	4-17-68
2	
3	
4	
5	
6	
7	
8	
9	
10	
11	
12	
13	
14	
15	
16	
17	
18	
19	
20	
21	
22	
23	
24	
25	
26	
27	
28	
29	
30	
31	
32	
33	
34	
35	
36	
37	
38	
39	
40	
41	
42	
43	
44	
45	
46	
47	
48	
49	
50	
51	
52	
53	
54	
55	
56	
57	
58	
59	
60	
61	
62	
63	
64	
65	
66	
67	
68	
69	
70	
71	
72	
73	
74	
75	
76	
77	
78	
79	
80	
81	
82	
83	
84	
85	
86	
87	
88	
89	
90	
91	
92	
93	
94	
95	
96	
97	
98	
99	
100	

POWER LINE 220V 3PH 60HZ.



TO TREADLE, ELECTRIC EYE, LOOP DETECTOR TO RESET TIMER AND TO REVERSE DOOR WHEN CLOSING.

TO RADIO RECEIVER TO OPEN-RESET TIMER AND REVERSE DOOR WHEN CLOSING. USE TERMINALS 1 AND 2 FOR SINGLE PUSH BUTTON

1-YELLOW.
2-WHITE.
3-BLACK.
4-RED.