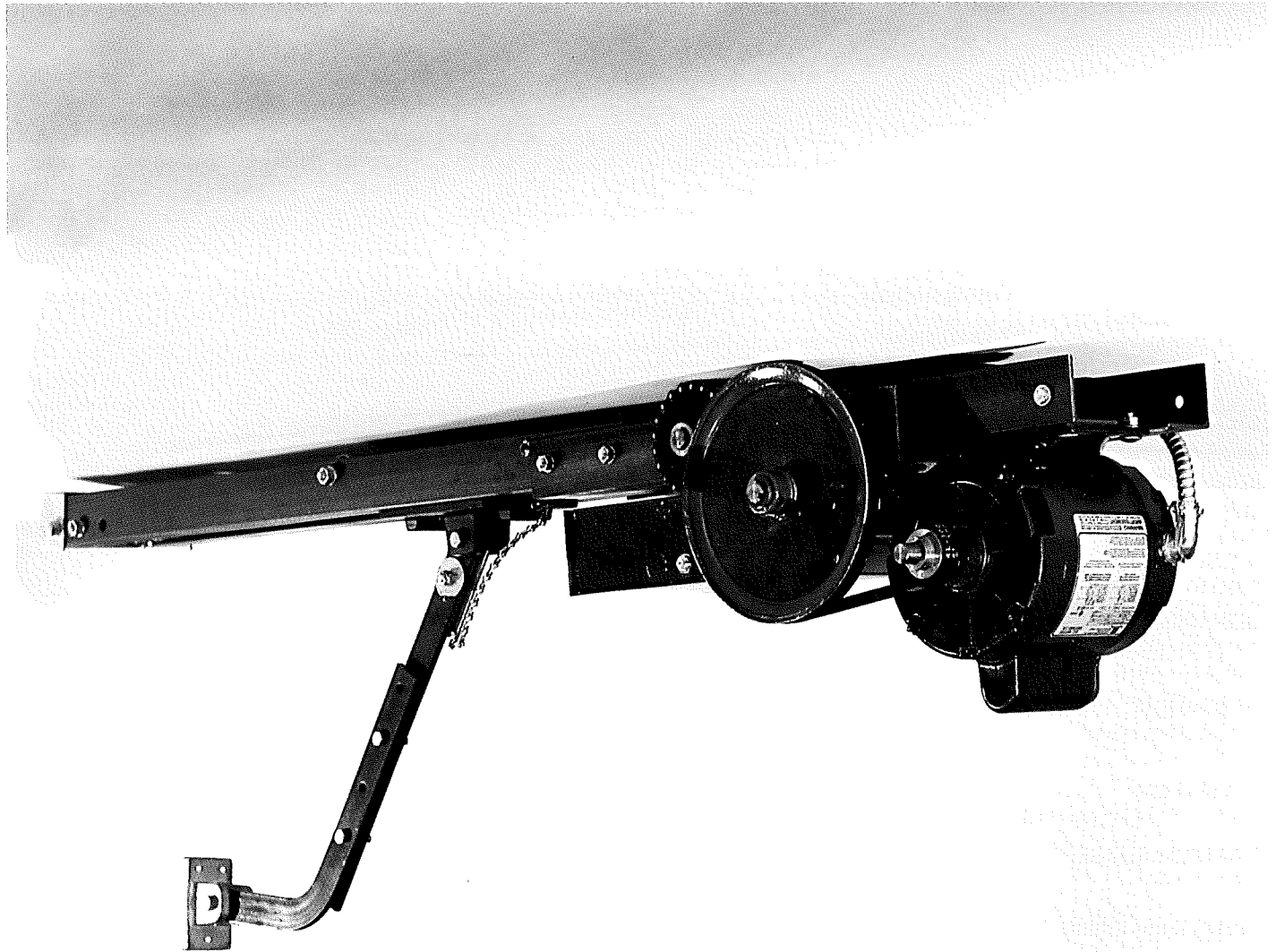




Napoleon/Lynx™

Ambass-a-dor®

**MODEL ATC3
TROLLEY TYPE COMMERCIAL OPERATOR**





MODEL ATC3 TROLLEY TYPE COMMERCIAL OPERATOR

GENERAL INFORMATION

MOTOR

1/3, 1/2 or 3/4 H.P., 115 – 230 volts, 1 phase, capacitor start.
1/2 or 3/4 H.P., 230 – 460 or 575 volts, 3 phase.
All with overload and undervoltage protection.

BUTTON CONTROL

Door may be stopped in any position and moved up or down with three button control.

LIMIT SWITCHES

Oil impregnated screw type cams and precision type micro switches for both up and down positions. They are easily adjusted without tools.

AUTOMATIC STOP

If downward traveling door meets an obstruction, it will automatically stop. This built-in, stopping, load-sensing device is easily adjusted without tools.

DRIVE

Belt and chain for efficient long lasting quiet operation. Traveling carriage slides on dual heavy-angle tracks with #65 chain drive.

DISCONNECT DEVICE

Equipped with a quick release arm for manual operation in case of power failure.

HEADROOM

5 cm (2") minimum from door's highest arc of travel.

BACKROOM

1.4 m (4' - 8") plus door height.

MAXIMUM SUGGESTED DOOR HEIGHT

4.3 m (14' - 0").

WIRED FOR RADIO CONTROLS

OPTIONAL

REVERSE MOUNT

Only 63.5 cm (2' - 1") plus door height.

AUTOMATIC REVERSE

If a downward traveling door meets an obstruction, it will automatically reverse and stop at fully open position. This built-in, reversing, load-sensing device is easily adjusted without tools.

SOLENOID BRAKE

Prevents door from coasting and to help secure door in closed position.

SPECIFICATIONS

BUTTON CONTROL

Three. Standard "open-close-stop", momentary contact type 24 volts (or constant pressure).

RELAY

Heavy duty Struthers-Dunn reversing contactor or equal.

OPERATOR CHASSIS

Made from 5 cm x 5 cm x 3.2 mm (2" x 2" x 1/8") steel angles reinforced with a steel channel bracket bolted together for greater strength.

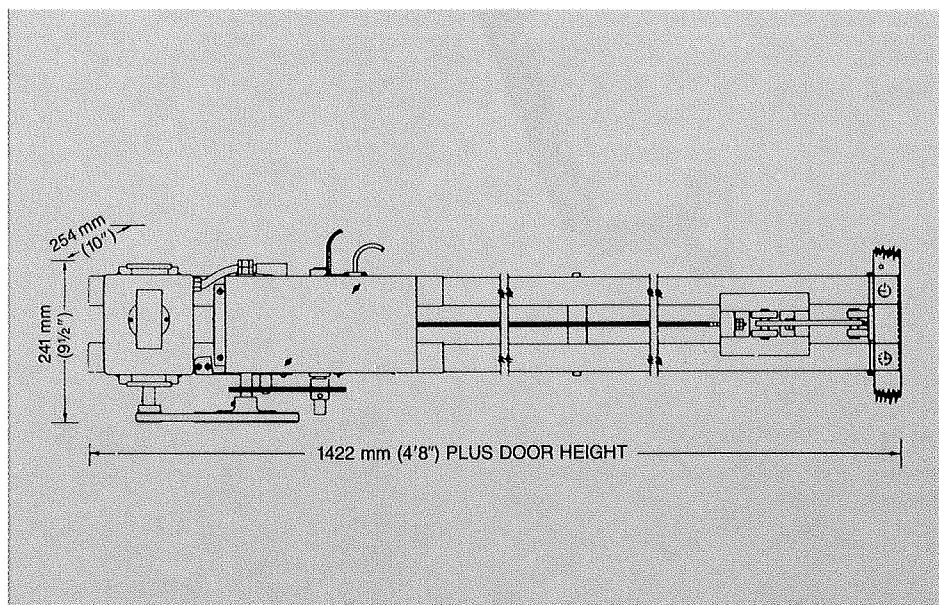
TROLLEY

Made from 5 cm x 5 cm x 3.2 mm (2" x 2" x 1/8") steel angles. An idler riding on two flanged bearings affixed at center of rails prevents chain from rubbing together on doors 3.3 m (10' - 0") and over.

CONTROL BOX

Made from 1.27 mm (.050") steel with removable aluminum or steel cover.

Specifications subject to change without notice.



OHIO

Napoleon/Lynx
P.O. Box 160, St. Rt. 66 South
Archbold, Ohio 43545
Telephone: 419-445-1010
Toll Free: 800-338-5399
FAX: 419-446-2616

NEW JERSEY

Napoleon/Lynx
166 Gould Ave.
Paterson, N.J. 07533
Telephone: 201-278-5588
Toll Free: 800-234-5969
FAX: 201-742-9832



Napoleon/Lynx
Napoleon Spring Works Inc.
A Lynx Company

NORTH CAROLINA

Napoleon/Lynx
150 Horn St.
Mocksville, NC 27028
Telephone: 704-634-9780
Toll Free: 800-554-9084
FAX: 704-634-9781

CALIFORNIA

Napoleon/Lynx
15801 Stagg St.
Van Nuys, CA 91406
Telephone: 818-908-9935
Toll Free: 800-369-6351
FAX: 818-908-1151

MODEL ATC3

TROLLEY TYPE COMMERCIAL OPERATOR

Trolley type operator for high traffic commercial garage door or standard lift sectional type or solid pivot type.
 Equipped with a standard 3 button station control. (24 volt control voltage)
 Shipped unassembled. Head Unit & Hardware Shipping weight is 56 lbs.

CONTROL WIRING

Pre-wired for - Radio control, single button station, three button station and any safety sensing device.

FEATURES

AUTOMATIC SAFETY REVERSE - This built-in device is standard on all ATC3's. If a downward traveling door meets an obstruction, it will reverse to the full open position.

THREE BUTTON STATION - To open, close and stop door, (with safety override on the open push button, to reverse door on downward travel).

RADIO CONTROL & 1 BUTTON STATION - To open, close and reverse door on downward travel.

SAFETY SENSING DEVICE - Will reverse door on downward travel.

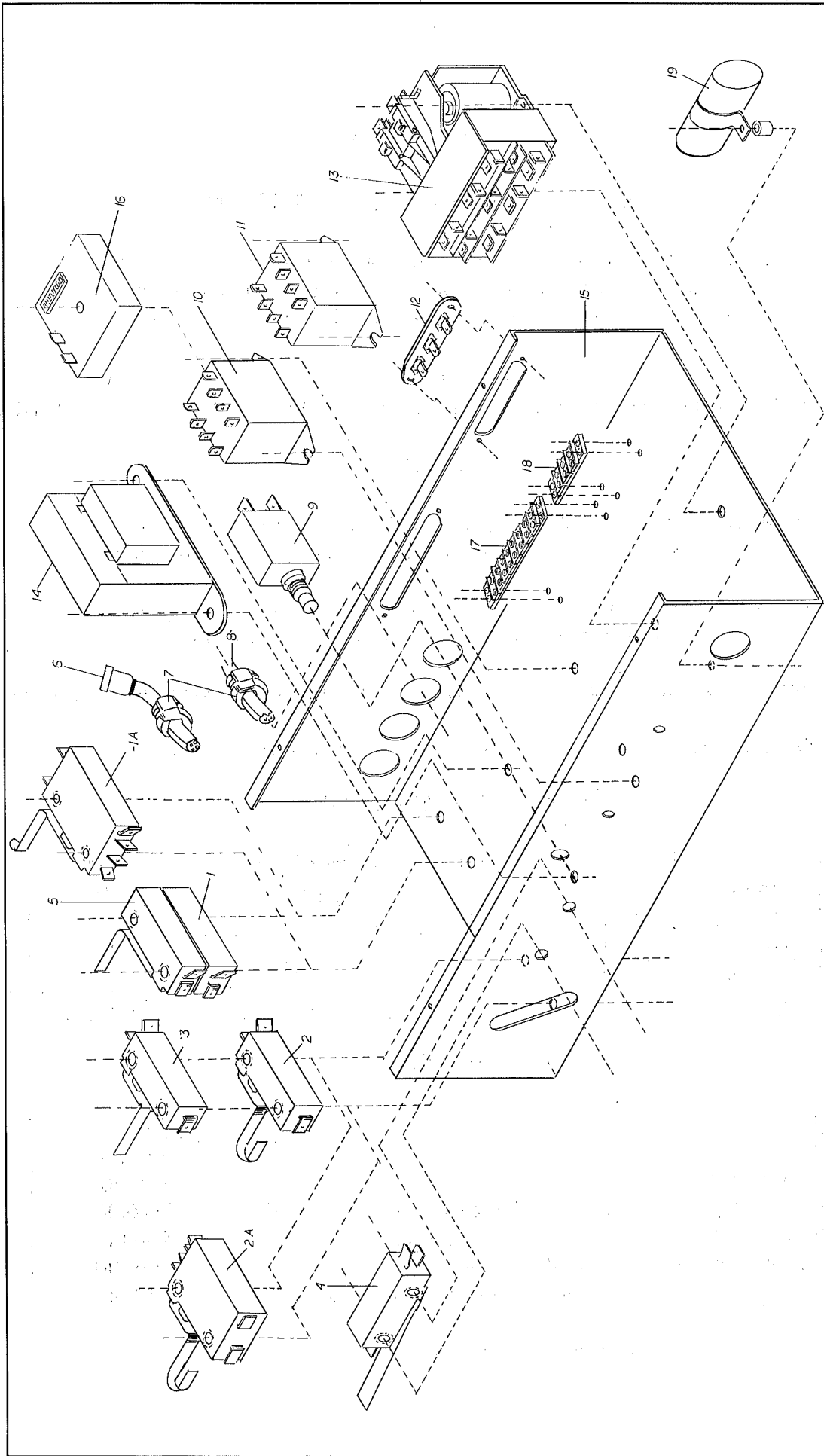
CONTINUOUS DUTY INDUSTRIAL MOTOR

MODEL	H.P.	VOLTAGE PHASE	MAXIMUM HEIGHT	MAXIMUM WEIGHT	LIST PRICE
ATC3-211	1/2	115/1	14'	590	
ATC3-221	1/2	220/1	14'	590	
ATC3-411	3/4	115/1	14'	590	
ATC3-223	1/2	220/3	14'	590	

OPTIONS

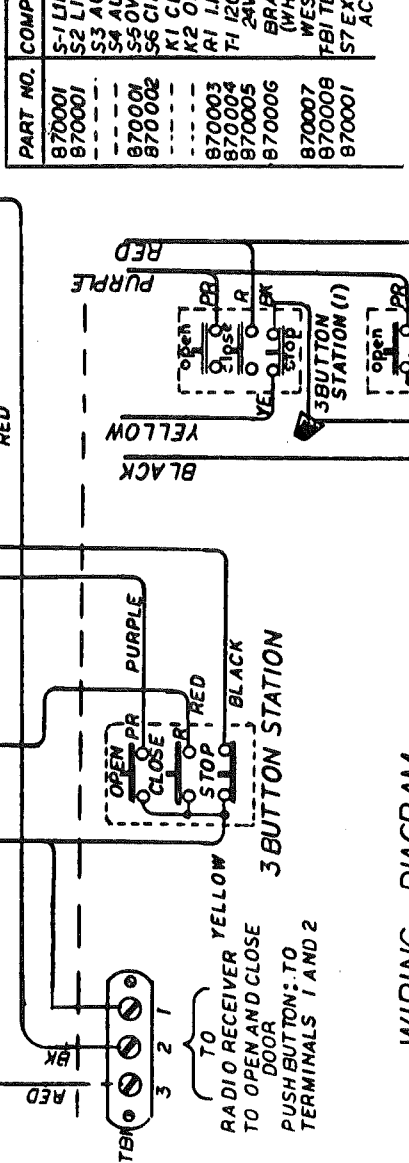
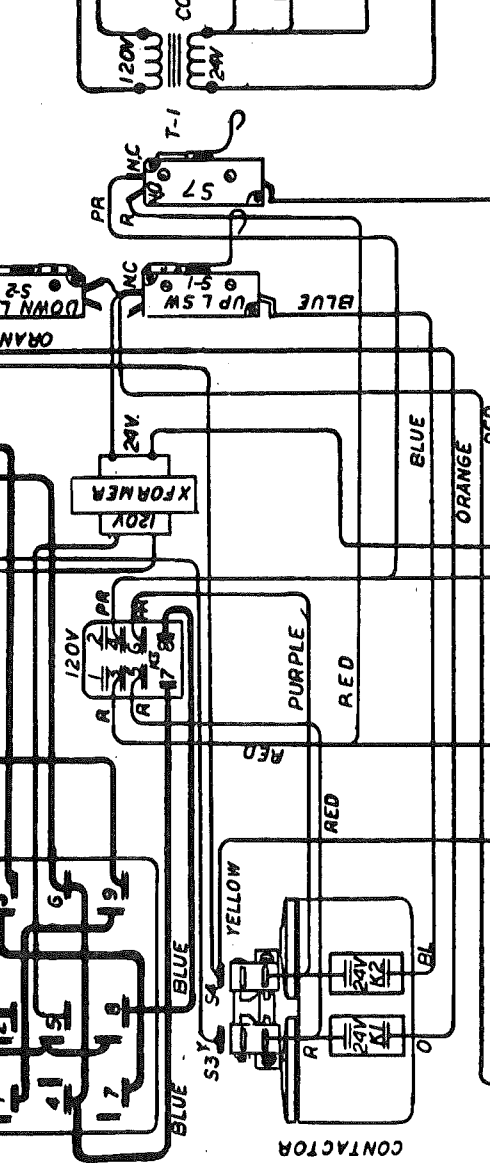
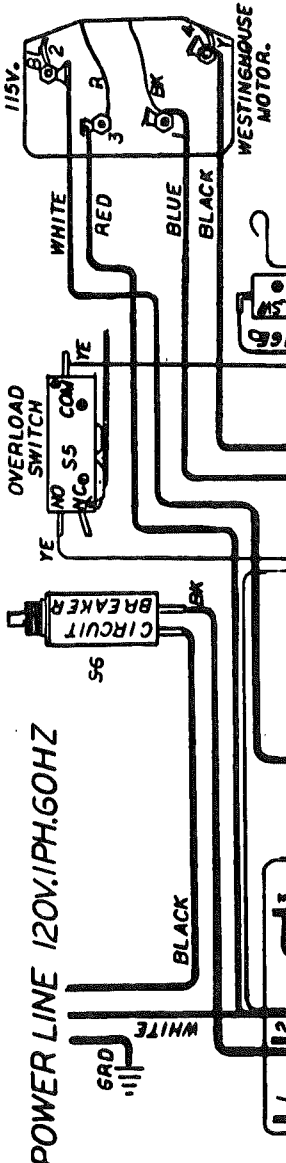
OPTIONS	LIST
Solenoid Brake	
Adjustable Friction Clutch	
Reverse Mount (For limited backroom; 2' Plus Door Height)	
Slow Speed (10" pulley)	
Double Reduction Slow Speed (7' Door Only)	
Doors Over 14' High Add for each additional foot	

For entry/exit control devices see modifications page.

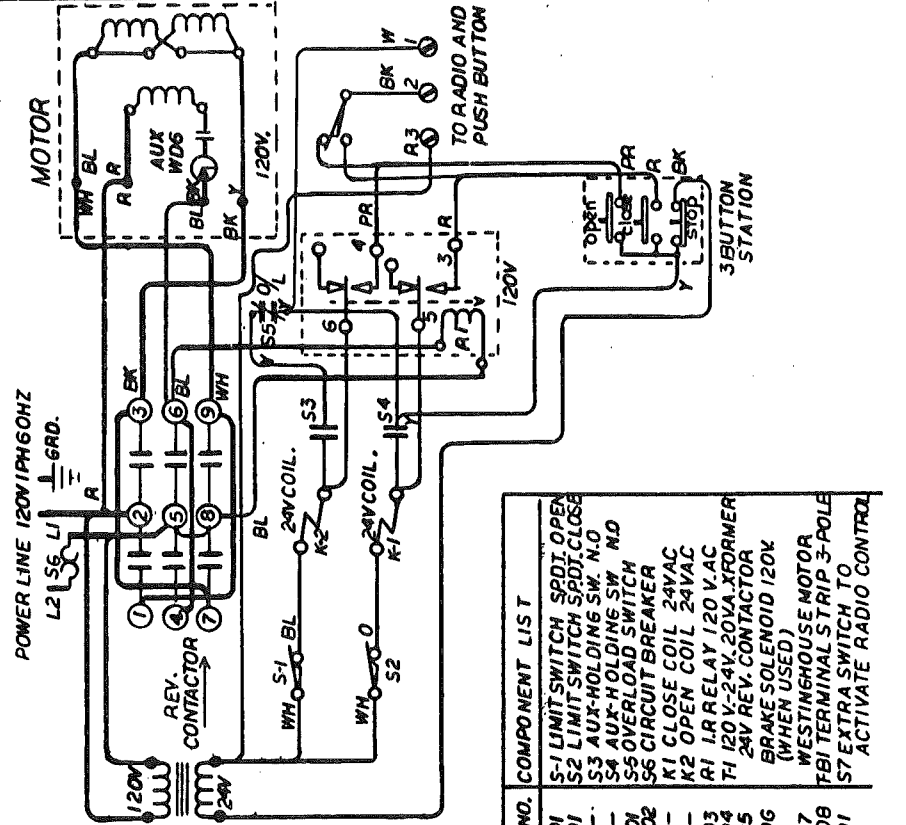


NAPOLEON LYNX CO. PAT. N.J.
 MADE IN U.S.A.
 MODEL NO. 1125-93
 EXPLODED VIEW ELECTRICAL BOX MODELS
 ALDT-ATC3-AMC-AMCA-T-AMB-AMB-ATC
 700094

POWER LINE 120V.1PH.60HZ



SCHEMATIC DIAGRAM



PART NO.	COMPONENT LIST
870001	S-1 LIMIT SWITCH SPDT OPEN
870001	S-2 LIMIT SWITCH SPDT CLOSE
---	S-3 AUX-HOLDING SW. N.O.
870001	S-4 AUX-HOLDING SW. N.D.
870002	S-5 OVERLOAD SWITCH
---	S-6 CIRCUIT BREAKER
---	K-1 CLOSE COIL 24VAC
---	K-2 OPEN COIL 24VAC
870003	R-1 I.R RELAY 120 V.AC
870004	T-1 120V-24V.20VA.XFORMER
870005	24V REV. CONTACTOR
870006	BRAKE SOLENOID 120V (WHEN USED)
870007	WESTINGHOUSE MOTOR
870008	T-81 TERMINAL STRIP 3-POLE
870001	S-7 EXTRA SWITCH TO ACTIVATE RADIO CONTROL

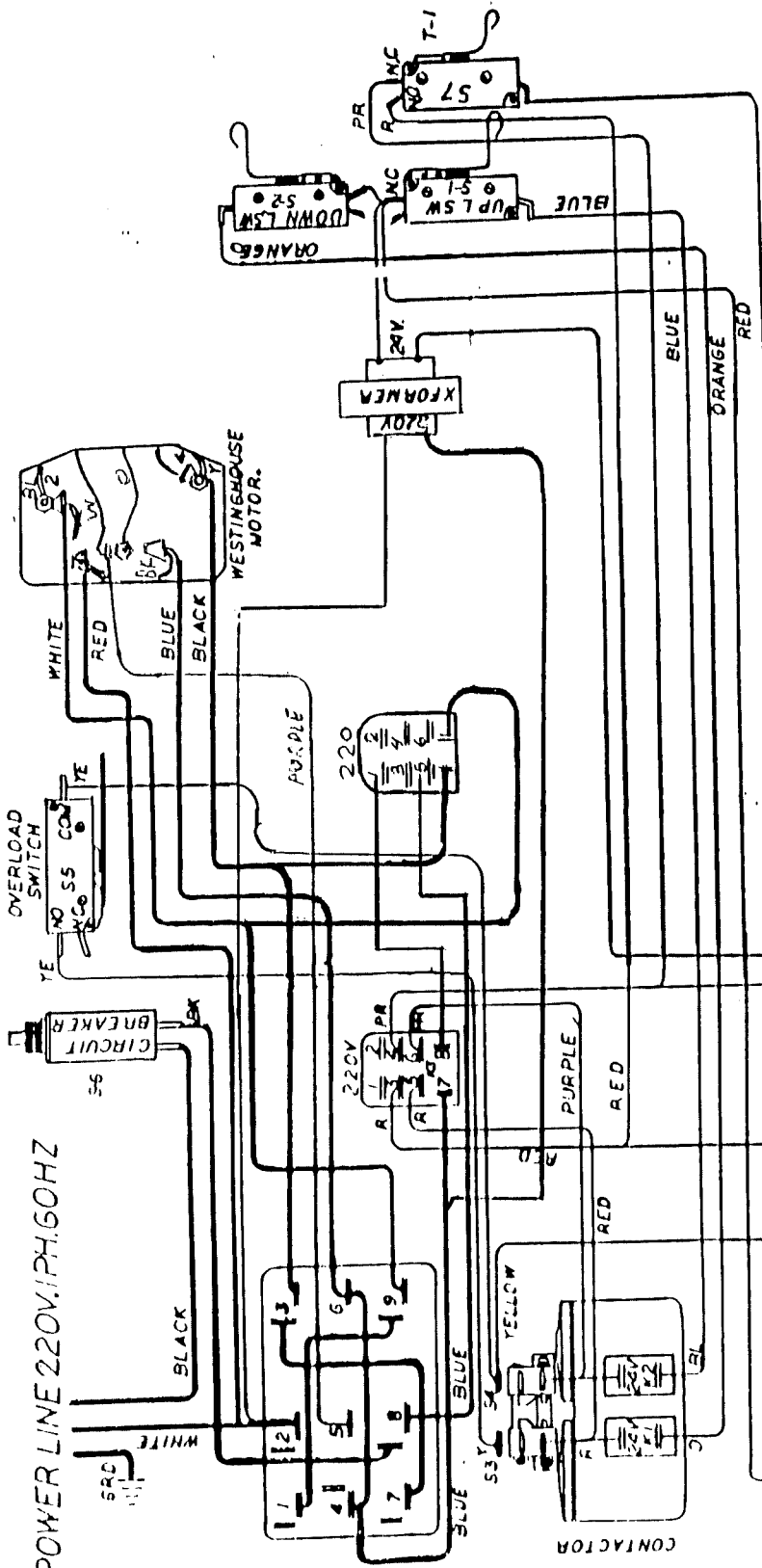
WIRING DIAGRAM

REVISED		REVISIONS		DATE	
1	BY	1	DATE	1	DATE
2	BY	2	DATE	2	DATE
3	BY	3	DATE	3	DATE
4	BY	4	DATE	4	DATE
5	BY	5	DATE	5	DATE

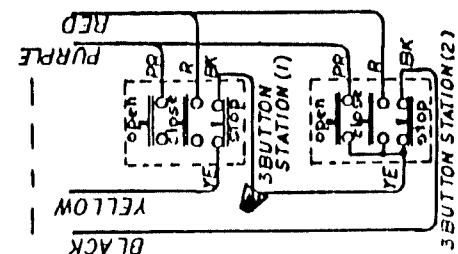
LYNX USA, INC.
 WIRING SCHEMATIC DIAGRAM
 T-C-3 120V 1PH 60HZ-RADIO C
 M 6000Y
 DATE 12-22-87
 700004

FOR TWO 3BUTTON STATIONS
 WIRE AS SHOWN.

POWER LINE 220V. 1PH. 60HZ



PART NO.	COMPONENT LIST
870001	S-1 LIMIT SWITCH SPDI OPEN
870001	S-2 LIMIT SWITCH SPDI CLOSE
---	S-3 AUX-HOLDING SW. N.O.
---	S-4 AUX-HOLDING SW. N.O.
870001	S-5 OVERLOAD SWITCH
870002	S-6 CIRCUIT BREAKER
---	K1 CLOSE COIL 24VAC
---	K2 OPEN COIL 24VAC
870003	R1 LR RELAY 220 V. AC
870004	T-1 120 V.-24V. 20VA. XFORMER
870005	24V REV. CONTACTOR
870006	BRAKE SOLENOID 230X (WHEN USED)
870007	WESTINGHOUSE MOTOR
870008	FBI TERMINAL STRIP 5-POLE
870001	S-7 EXTRA SWITCH TO ACTIVATE RADIO CONTROL

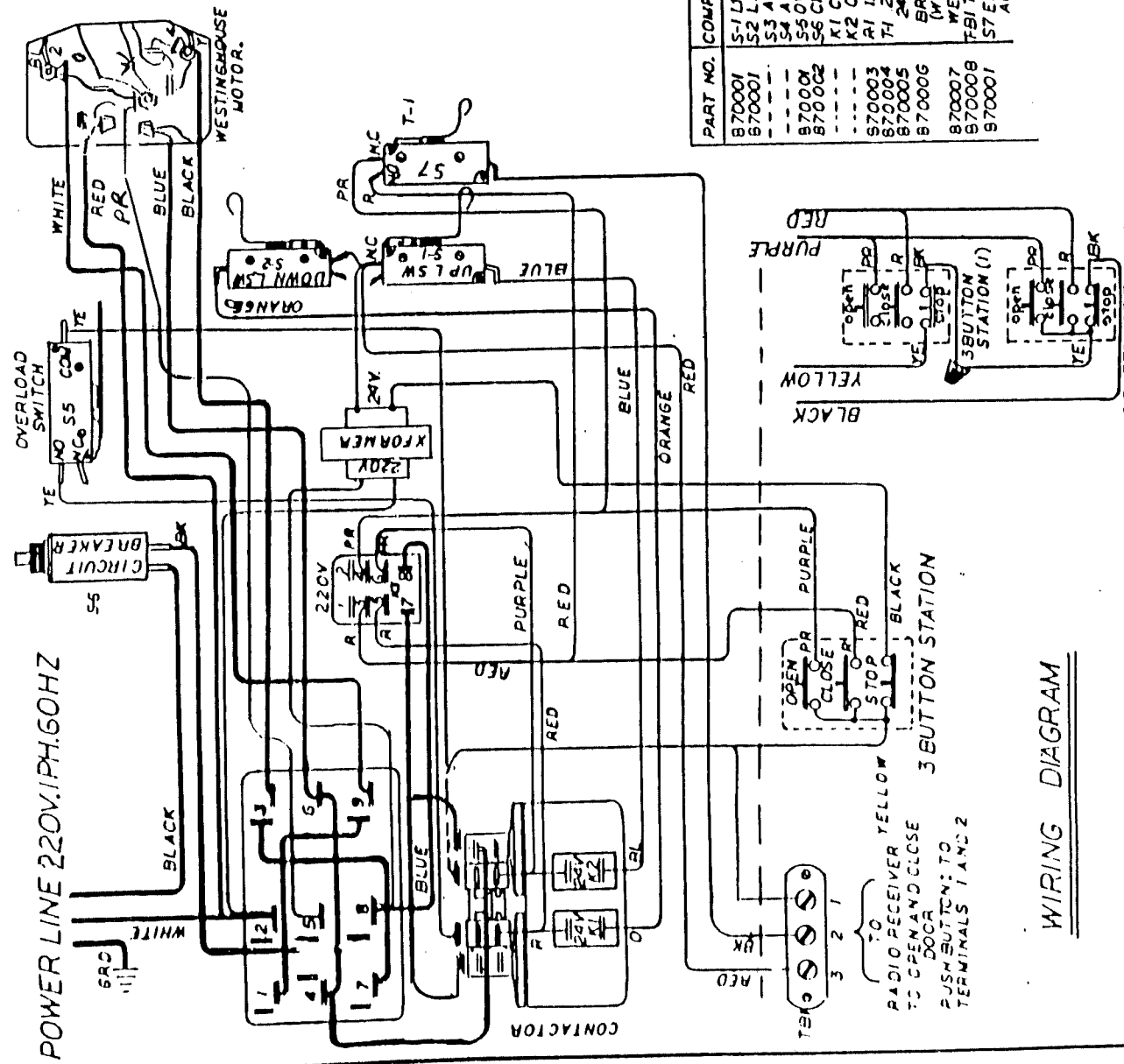


WIRING DIAGRAM

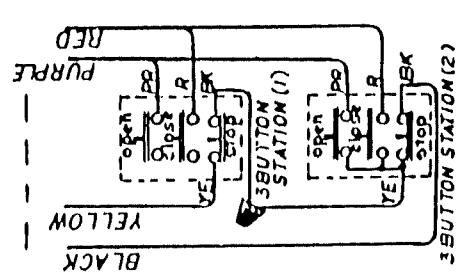
FOR TWO 3BUTTON STATIONS WIRE AS SHOWN.

LYNX USA, INC. 220V	
WIRING SCHEMATIC DIAGRAM	
TCS	220V 1PH 60HZ-RADIO C
DATE	11-22-87
BY	N6
NO.	N6
REV.	N6
700004	A

POWER LINE 220V. 1PH. 60HZ



PART NO.	COMPONENT LIST
870001	S-1 LIMIT SWITCH SPDT. OPEN
870001	S-2 LIMIT SWITCH SPDT. CLOSE
---	S-3 AUX-HOLDING SW. N.O.
870001	S-4 AUX-HOLDING SW. N.O.
870002	S-5 OVERLOAD SWITCH
---	S-6 CIRCUIT BREAKER
---	K-1 CLOSE COIL 24VAC
---	K-2 OPEN COIL 24VAC
870003	T-1 LR RELAY 220 V.AC
870004	T-1 20V-24V. 20VA. XFORMER
870005	24V REV. CONTACTOR
870006	BRAKE SOLENOID 20V (WHEN USED)
870007	WESTINGHOUSE MOTOR
870008	FBI TERMINAL STRIP 3-POLE
870001	S-7 EXTRA SWITCH TO ACTIVATE RADIO CONTROL



WIRING DIAGRAM

FOR TWO 3BUTTON STATIONS WIRE AS SHOWN.

A TC3-220V1P3

LYNX USA, INC
 WIRING SCHEMATIC DIAGRAM
 TC-3 220V 1PH 60HZ - RADIO C

100003A