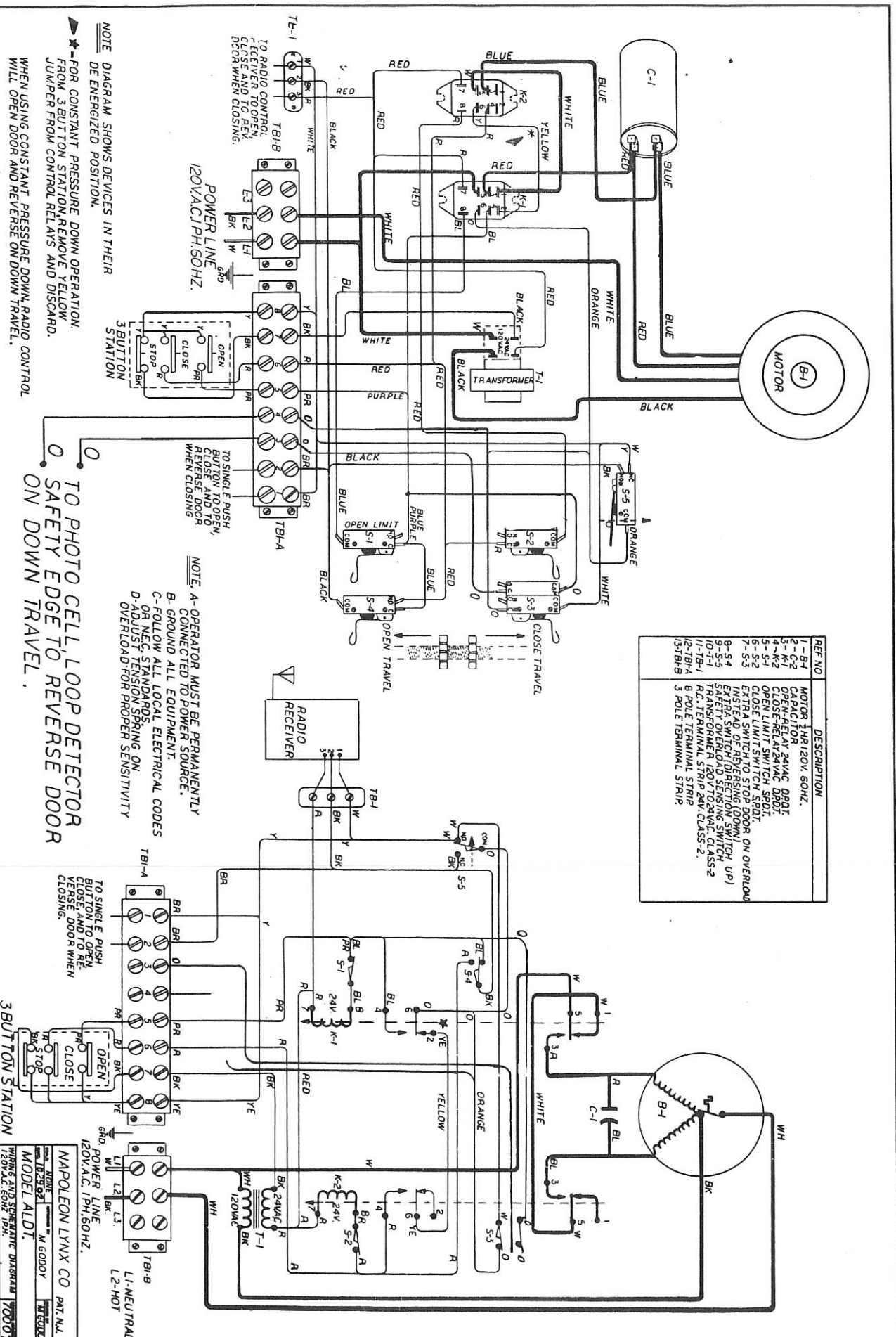


REF NO	DESCRIPTION
1-B-1	MOTOR 1/2HP 120V 60HZ.
2-C-1	CAPACITOR .24VAC 60HZ.
3-K-1	CLOSE-BELLY 24VAC DPDT.
4-K-2	CLOSE-BELLY 24VAC DPDT.
5-S-1	OPEN LIMIT SWITCH SPDT.
6-S-2	CLOSE LIMIT SWITCH SPDT.
7-S-3	EXTRA SWITCH-TO STOP DOOR ON OVERLOAD
8-S-4	EXTRA SWITCH-TO STOP DOOR ON OVERLOAD
9-S-5	EXTRA SWITCH-TO STOP DOOR ON OVERLOAD
10-T-1	TRANSFORMER 120V TO 24VAC CLASS-2
11-TB-1	R.C. TERMINAL STRIP 24V CLASS-2.
12-TB-A	3 POLE TERMINAL STRIP
13-TB-B	3 POLE TERMINAL STRIP



NOTE: DIAGRAM SHOWS DEVICES IN THEIR DE ENERGIZED POSITION.

★ FOR CONSTANT PRESSURE DOWN OPERATION, FROM 3 BUTTON STATION, REMOVE YELLOW JUMPER FROM CONTROL RELAYS AND DISCARD. WHEN USING CONSTANT PRESSURE DOWN, RADIO CONTROL WILL OPEN DOOR AND REVERSE ON DOWN TRAVEL.

TO PHOTO CELL LOOP DETECTOR SAFETY EDGE TO REVERSE DOOR ON DOWN TRAVEL.

NOTE: A- OPERATOR MUST BE PERMANENTLY CONNECTED TO POWER SOURCE.
 B- GROUND ALL EQUIPMENT.
 C- FOLLOW ALL LOCAL ELECTRICAL CODES OR NEC STANDARDS.
 D- ADJUST TENSION SPRING ON OVERLOAD FOR PROPER SENSITIVITY.

TO SINGLE PUSH BUTTON TO OPEN, CLOSE AND TO REVERSE DOOR WHEN CLOSING.

TO SINGLE PUSH BUTTON TO OPEN, CLOSE AND TO REVERSE DOOR WHEN CLOSING.

3 BUTTON STATION

POWER LINE 120V A.C. 1PH, 50HZ.

L-1-NEUTRAL
L-2-HOT

NOTE: MODEL ALDI.

WIRING AND SCHEMATIC DIAGRAM 700078