

**INSTALLATION MANUAL
FOR
OPERATOR MODELS
ALDJ, ALDJH,
AMCJ, AMCJH,
AHDCJ, AND AGHO**

Warranty

Our operators are unconditionally warranted against defects in materials or workmanship for one year from date of installation. Any part, parts or complete unit found to be defective within this period shall, at the manufacturer's option, be repaired or replaced free of charge. The Manufacturer will not be responsible for transportation and/or field service charges. The above warranty is in lieu of all other warranties, expressed or implied, and shall be considered void if visible evidence implies recommended installation procedures and maintenance instructions were not followed.

NOTE: THESE OPERATORS ARE UL LISTED



Napoleon/Lynx™

175 AVE. UPPER EDISON AVE.
ST. LAMBERT, QUE., CANADA J4R 2R3

1040 MEYERSIDE DRIVE.
MISSISSAUGA, ONTARIO L5T 1P9

166 GOULD AVE.
PATERSON, NJ 07533

15801 STAGG STREET
VAN NUYS, CA 91406

ROUTE 66, SOUTH
ARCHBOLD, OHIO 43502

101 NORTH 57TH AVE.
PHOENIX, AZ 85043

GENERAL INFORMATION

AMCJ, AMCJH, AHDCJ and AGHO Series Operators are designed for large sectional overhead type doors and steel rolling doors driven by a cross header shaft.

FEATURES

Power is developed by V belt and pulleys and heavy duty roller chain and sprockets reducing the speed of the motor from 1750 RPM to 10" Per Sec. for sectional doors and 6" to 8" Per Sec. for steel rolling doors. Driven Limit Switches (That are adjustable) shut off motor in both open and close positions. A solenoid brake stops and holds the door when power is off.

ALDJ and AMCJ series operators do not have a chain hoist. A disconnect device operable from floor level is provided, allowing door to be operated by hand.

ALDJH, AMCJH, AHDCJ and AGHO series have a manual operated chain hoist that is controlled from a disconnect device operable from floor level. An electrical interlock switch cuts power to operator during manual operation.

INSTALLATION INSTRUCTIONS FOR MODELS: ALDJ, AMCJ, AMCJH AND AHCJ

Unpack carton and check for possible damage. If damage in shipping is detected, file claim with freight carrier before proceeding further.

IMPORTANT: Be sure that the available power matches that on the operator Name Plate

The Carton should contain the following:

Model ALDJ:

- 1 Power unit complete (Marked ALDJ)
- 1 Control station
- 4 Ft. #41 roller chain
- 2 #41 chain connecting links
- 2 1/4 sq. shaft keys 1-1/2"
- 1 sash chain (2/3 door hgt.)
- 2 Spreader bars
- 1 lever release assembly
- 1 sprocket 41B12 x 1" (Operator) 1/4 KW
- 1 sprocket 41B30 or 41B36 x 1" I.D.
(Stand. sectional door)
- 2 1" shaft collars

MOUNTING OPERATOR

Model AMCJ:

- 1 Power Unit Complete
- 1 Control Station
- 4 Ft. #41 Roller Chain
- 2 #41 Chain Connection Links
- 2 1/4 x 1-1/2 Keys, shaft
- 1 lever release assembly
- 1 Sash Chain and Brackets (2/3 Door Hgt.)
- 2 Spreader bars
- 1 Sprocket 41B36 (Door) (AMCJH)
- 1 Sprocket 41B12 (Operator)
- 2 1" I.D. Shaft Collars

Model AMCHJ Same as above except
Supplied with chain hoist
and hand chain 1-1/2 x Door Height

Model AHDCJ/AGHO:

- 1 Power unit complete
- 1 control station
- 4 ft. #50 roller chain
- 2 #50 chain connecting links
- 2 1/4 sq. x 1-1/2 shaft keys
- 1 sash chain (2/3 door hgt.)
- 2 Spreader bars
- 1 lever release assembly
- 1 sprocket 50B12 (Operator shaft)
- 1 sprocket 50B24 (Wood door) or 50B36 (Steel door)
- 2 1" I.D. shaft collars
- 1 chain hand hoist (1-1/2 x door hgt.)

1. Figure I shows suggested mounting positions for wood or steel sectional overhead doors.
2. Figure II shows suggested mounting positions for steel rolling doors.
3. The center distance between the door shaft and the operator shaft is usually between 10" and 15". A more accurate measurement is determined by the diameter of the sprockets and the length of the roller chain. We try to hold this center distance by a bearing spacer bar. See figure III for standard measurements.
4. When a standard measurement cannot be used, it will be easier to hang the operator temporarily by the sprockets and the roller chain (cut to desired length) on one side, and a rope on the other side. As shown in figure III. Mount the bearing brackets as shown, but leave off the connecting bar (3/16 x 9-1/2 x 3) - (A longer piece of flat bar or a piece of 2 x 2 x 1/8 angle iron can be used instead) with operator hanging in place by length of roller chain and a piece of rope tied to support opposite ends of shaft, mark and drill or punch holes in the connecting bar (or 2 x 2 x 1/8 angle iron) and fasten with 4 3/8 x 1" bolts and nuts.
5. Holes to mount operator can now be marked and drilled.
6. Operator should be mounted on the wall using 3/8" through bolts for a secure mounting. If wall is constructed to prohibit the use of through bolts, lag bolts and shields of suitable size may be used instead.

CLUTCH ADJUSTMENT

7. 1/4" shaft key is furnished with operator. If no key way is provided in the door shaft, drill a 5/16" hole through sprocket and door shaft and insert 5/16 x 1-1/2 roll pin.
8. After operator is installed, adjust the clutch.
Note: More problems are caused by an improperly adjusted clutch than by any other cause.
 - (a) Remove cotter pin from nut on clutch shaft.
(Note: AMCJ & AMCJH have elastic stop nut instead of cotter pin)
 - (b) Back off clutch nut until there is insufficient tension on clutch to drive door.
 - (c) Tighten clutch nut gradually until there is just enough tension on spring to permit operator to move door smoothly, but to allow clutch to slip if door is obstructed.
 - (d) When clutch is properly adjusted and door is properly adjusted, it is possible to stop the door by hand during travel.
 - (e) Replace cotter pin after each adjustment.

9. Limit switch adjustment:

After operator is installed and connected to door, remove cover from electrical enclosure and observe traveling nuts on limit shaft. Move door up by hand hoist, or large belt pulley. Be sure that the traveling nut is moving away from the closest switch arm. The purpose of this is to determine if the operator and the door are synchronized. (That is: to determine if the operator was hooked to the door shaft when the door and the operator were in the Down position*** or was the operator in the Down position and the door in the UP position).

The correction is made by depressing the traveling nut retaining bracket and rotating the traveling nuts to the opposite end. Re-engage retaining bracket. See Fig.IV.

10. NOTE-CAUTION**

3 phase operators must be checked for correct rotation before limit switch adjustment.

11. This can be determined by having the door up off the floor about 2 feet, push DOWN button. If the door starts down, the phase and rotation are correct. Be sure to use STOP button until limit switches are set.

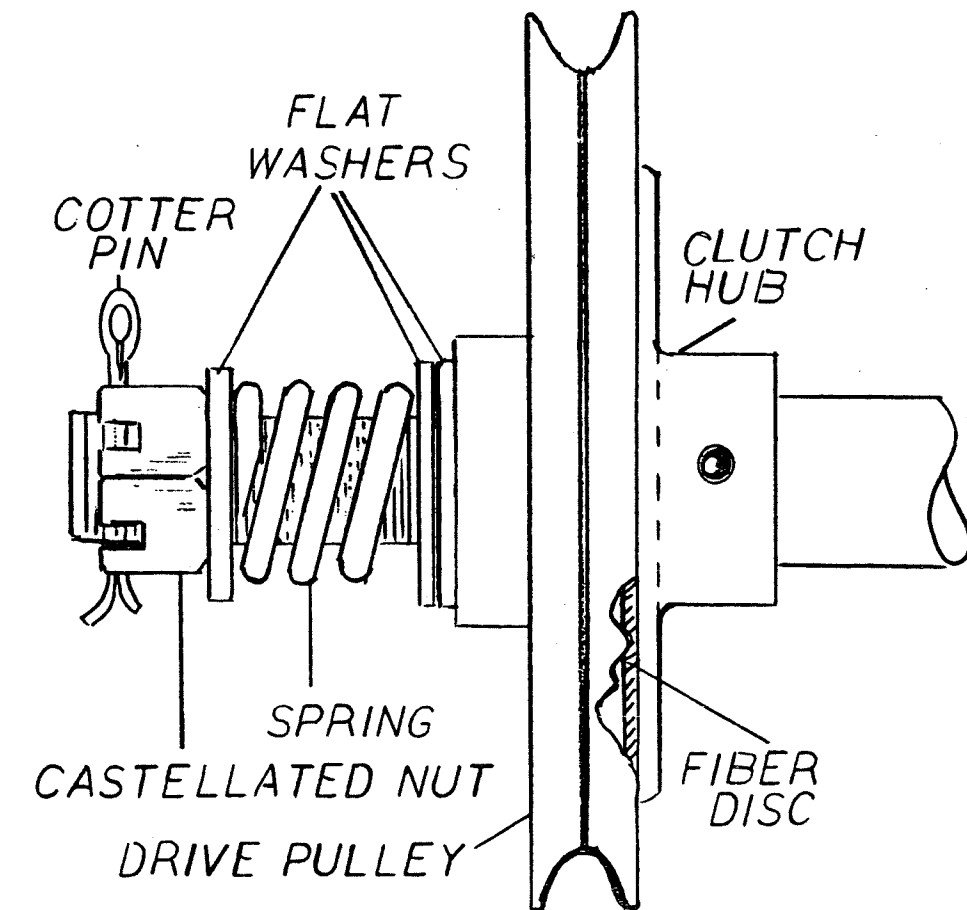
12. If phase is wrong, two wires from power have to be interchanged.

13. You can now proceed to set limit switches. Run door to down position. Depress traveling nut retaining bracket and rotate traveling nut until it touches the down limit arm, and a click is heard or the switch is opened. Run door up about two feet, then down to the floor again. (Be ready to stop door with stop button, just in case the adjustment was not correct) If the door stopped too soon, disengage traveling nut and rotate away from down limit switch. If door did not stop in time, rotate traveling nut toward down limit switch.

14. Repeat until correct adjustment is obtained. Repeat same adjustment for Up limit. Traveling nut retaining bracket must be re-engaged each time limit switch is adjusted.

15. Temporary use of push button can be obtained by matching wire colors from operator to button and fastening with wire nuts. This will allow you to operate the door without moving too far away from limit switch.

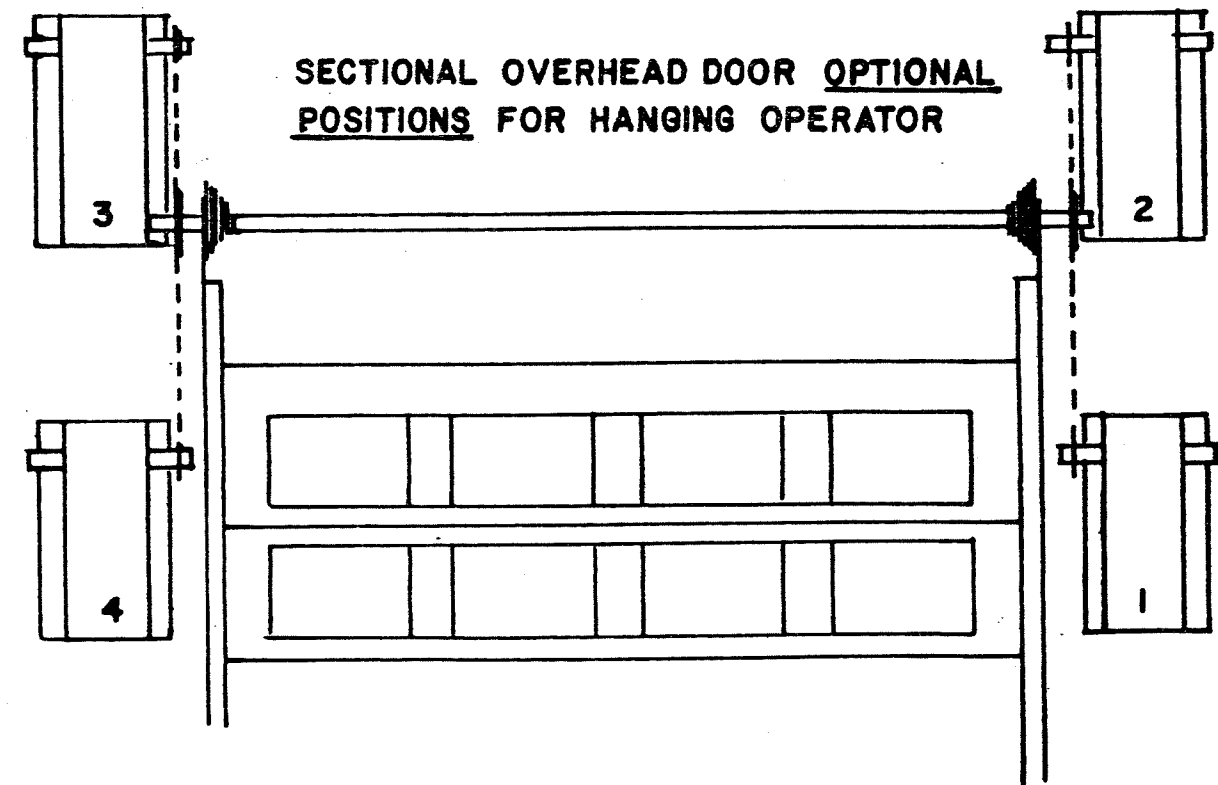
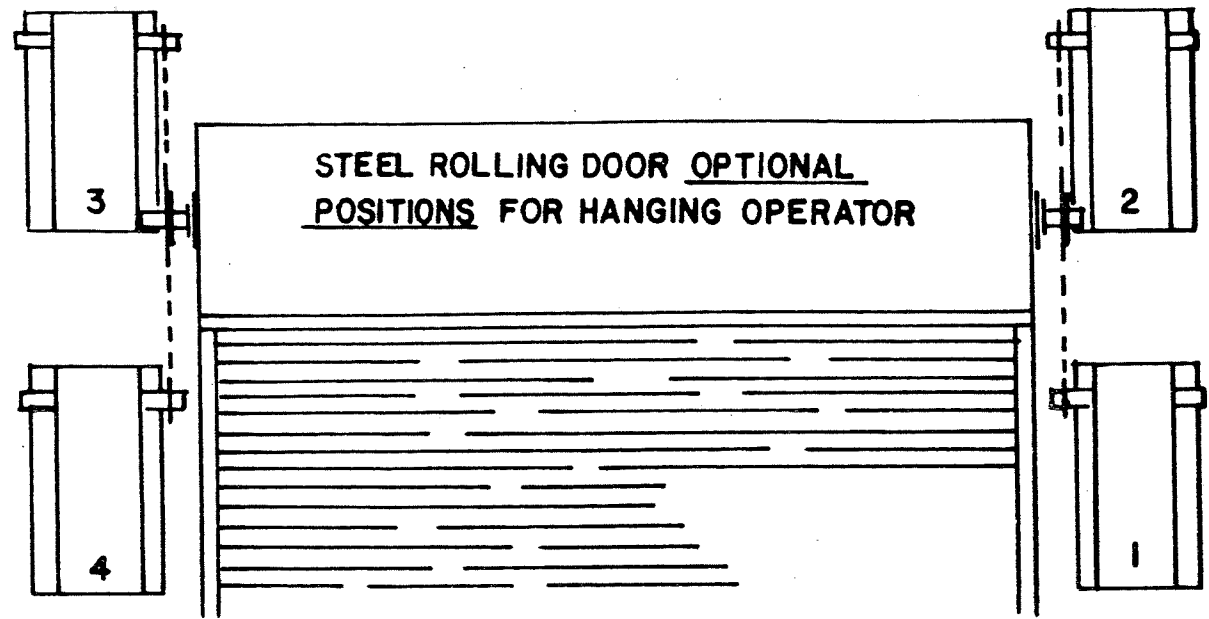
AHDCJ CLUTCH ADJUSTMENT



INSTRUCTIONS

- (A) REMOVE COTTER PIN FROM NUT ON CLUTCH SHAFT. (NOTE: ALDJ, AMCJ & AMCJH HAVE JAM NUTS INSTEAD OF COTTER PIN.)
- (B) BACK OFF CLUTCH NUT UNTIL THERE IS INSUFFICIENT TENSION ON CLUTCH TO DRIVE DOOR.
- (C) TIGHTEN CLUTCH NUT GRADUALLY UNTIL THERE IS JUST ENOUGH TENSION ON SPRING TO PERMIT OPERATOR TO MOVE DOOR SMOOTHLY, BUT TO ALLOW CLUTCH TO SLIP IF DOOR IS OBSTRUCTED.
- (D) WHEN CLUTCH IS PROPERLY ADJUSTED AND DOOR IS PROPERLY ADJUSTED, IT IS POSSIBLE TO STOP DOOR BY HAND TRAVEL.
- (E) REPLACE COTTER PIN AFTER EACH ADJUSTMENT.

WALL MOUNT OPTIONAL POSITIONS



POSITION 2 ALDJ, AMCJ AND AMCJH ONLY

SHELF MOUNT OPERATOR OPTIONAL POSITIONS

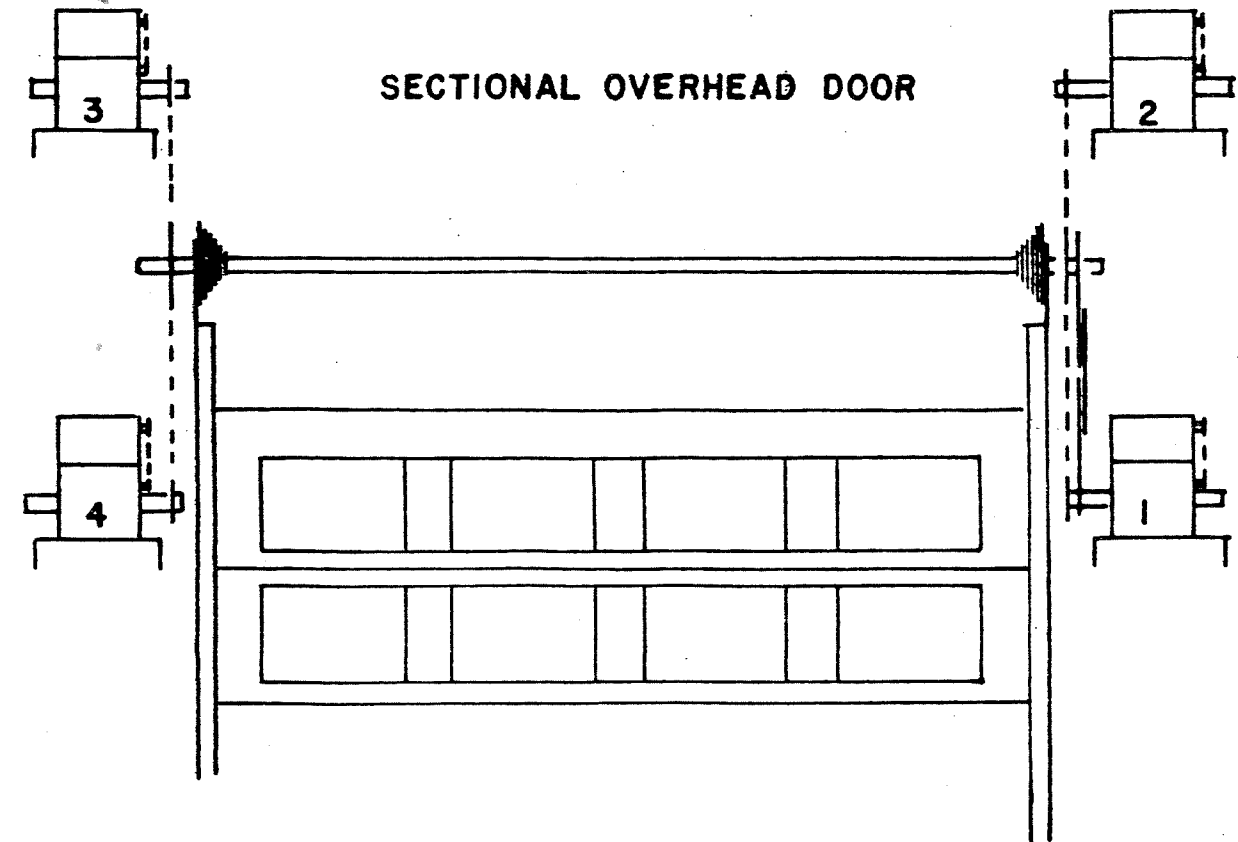
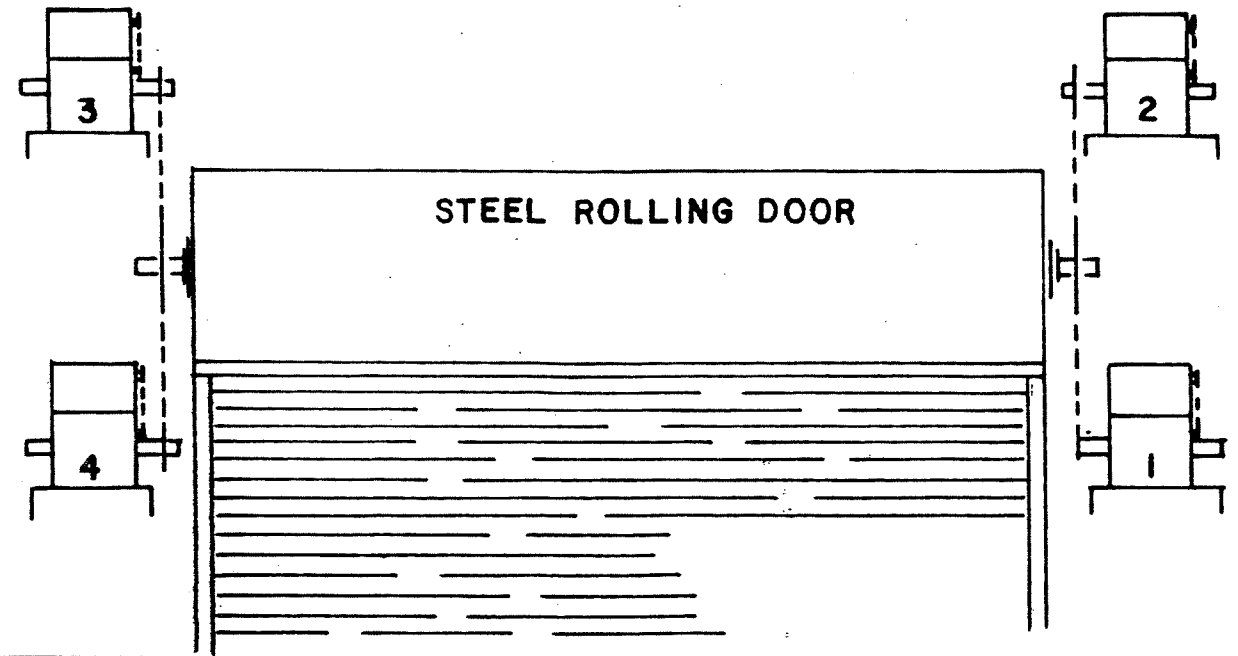
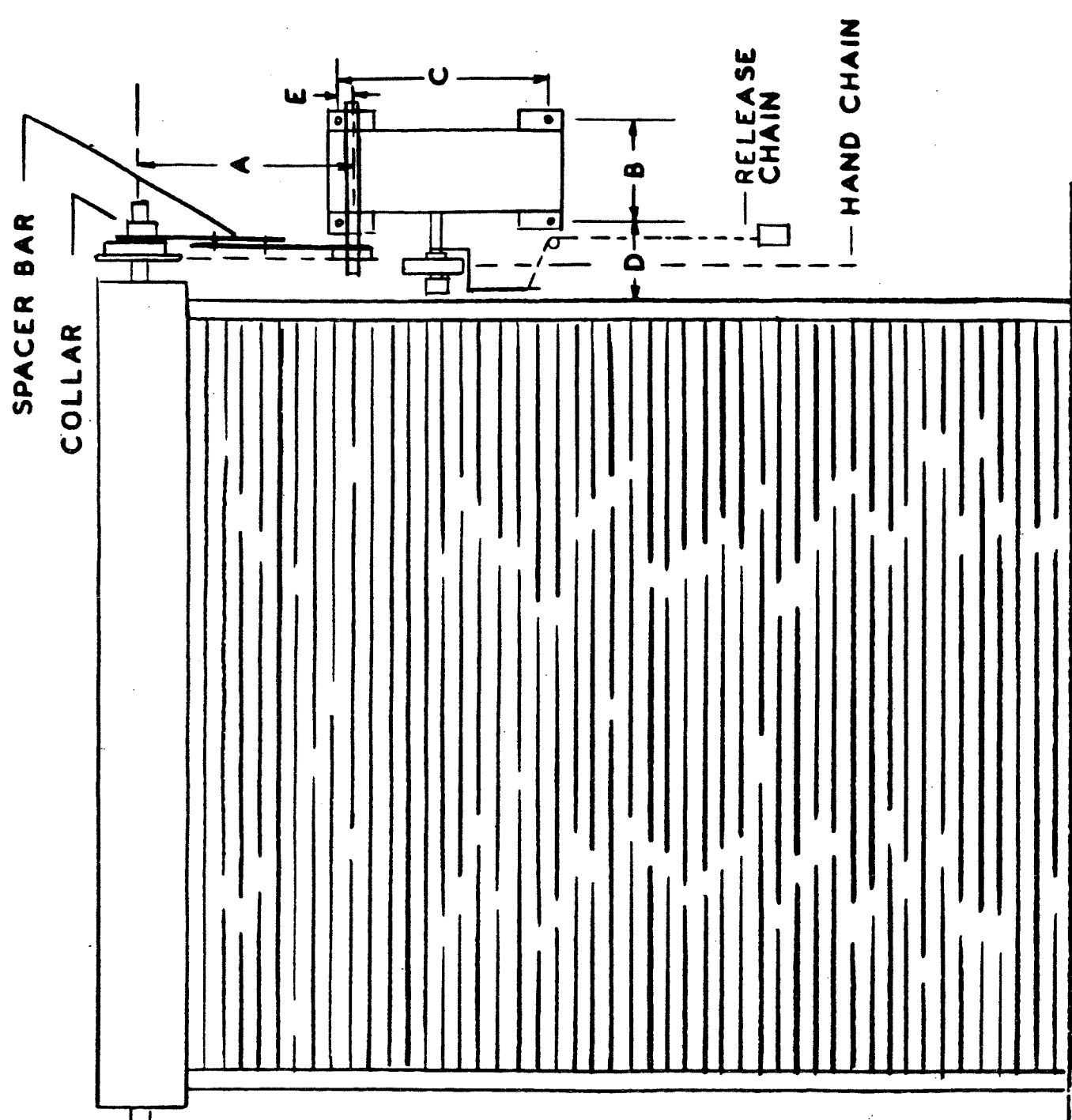
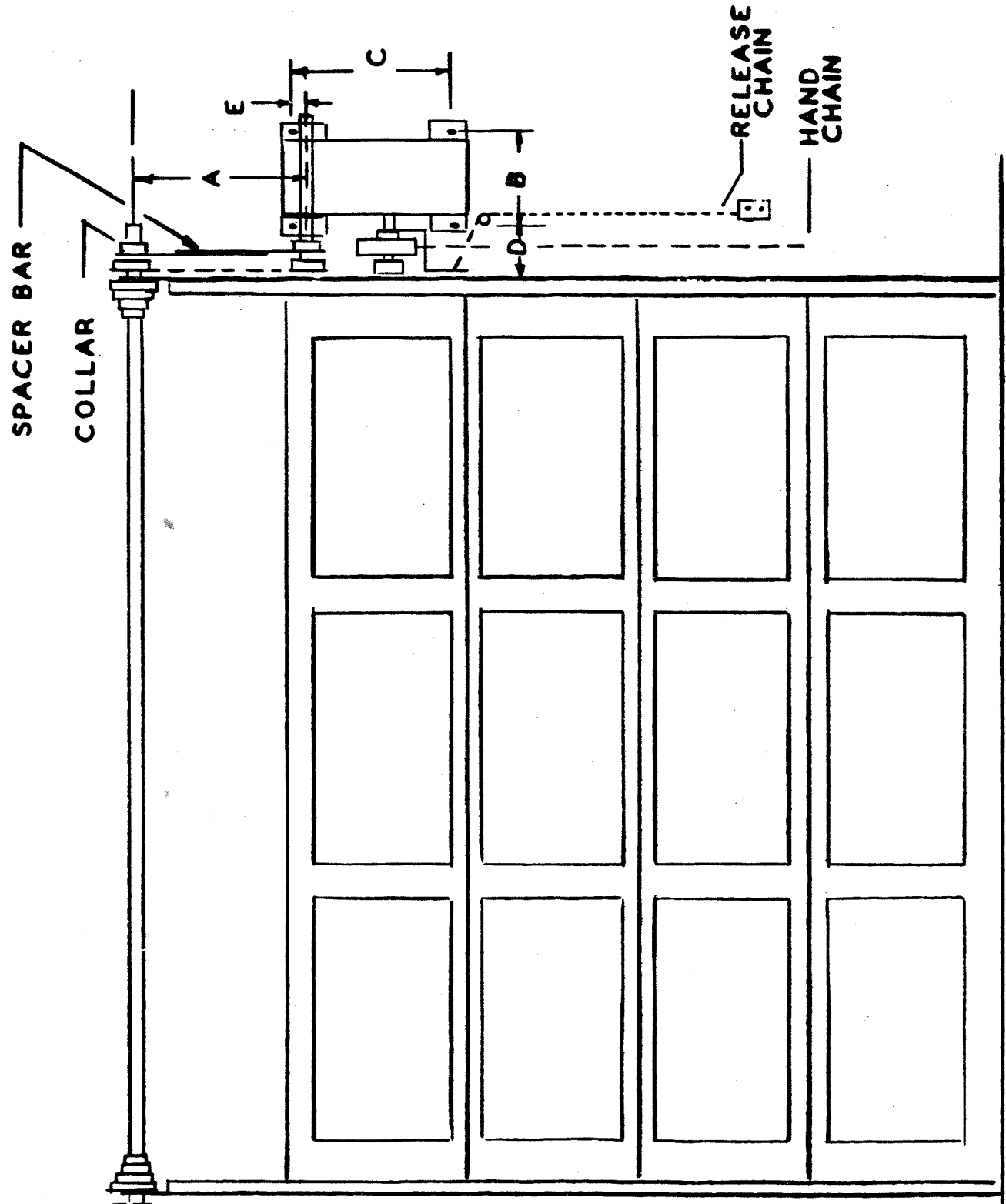


FIG. 2



AGHO - HDCJ		MCJ - H	
A	$12 \frac{3}{16}$	A	$12 \frac{8}{16}$
B	$9 \frac{1}{8}$	B	$9 \frac{3}{4}$
C	$23 \frac{11}{16}$	C	18
D	$5 \frac{1}{2}$	D	2
E	$2 \frac{1}{8}$	E	$2 \frac{5}{16}$

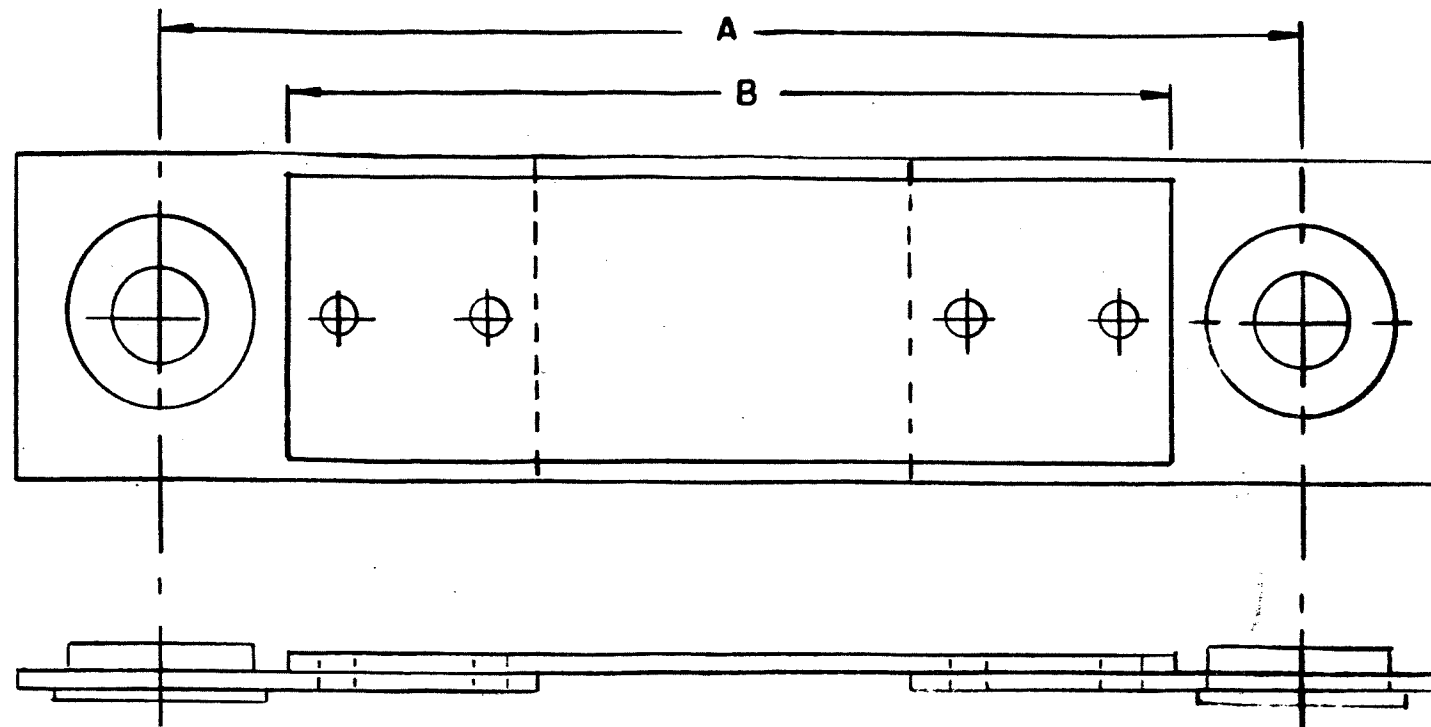
Fig. 1



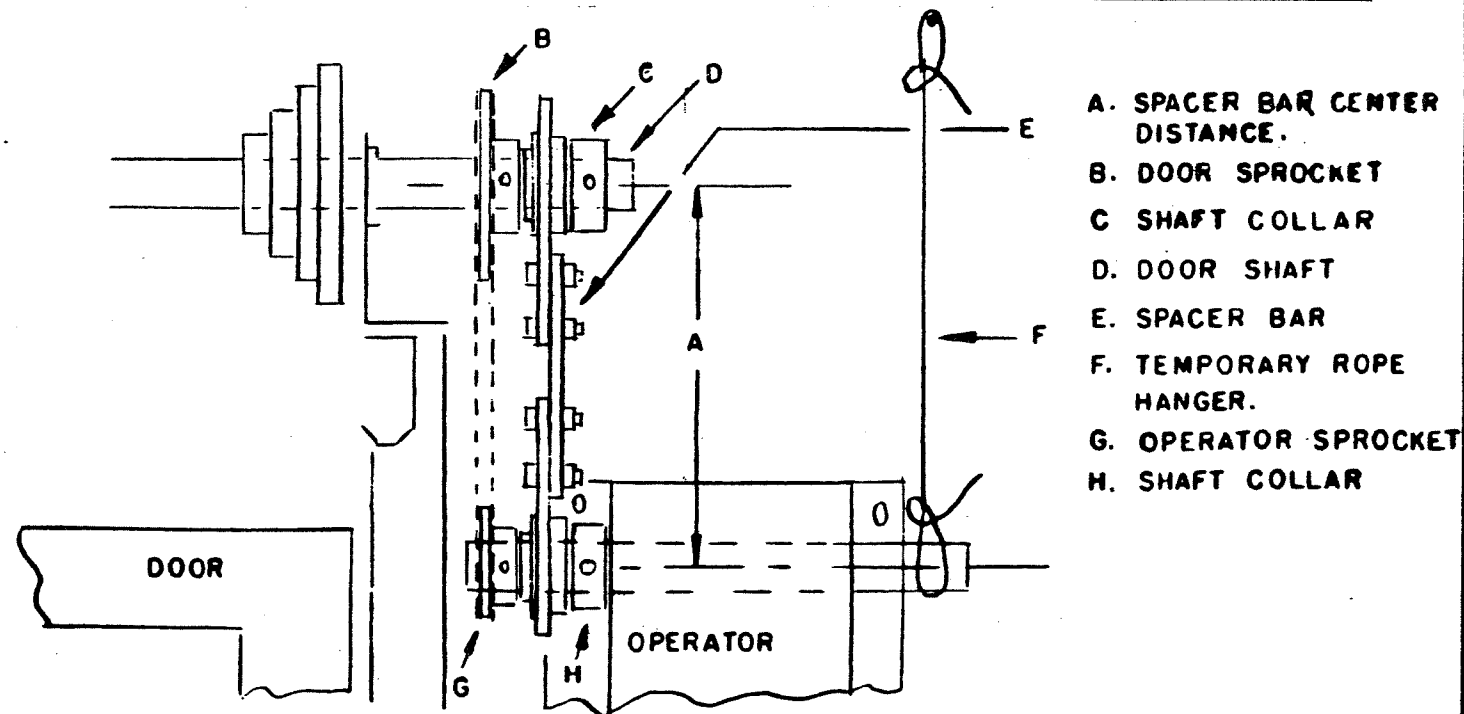
ALDJ - MCJH		AHD CJ	
A	$12 \frac{1}{8}$	A	$10 \frac{3}{4}$
B	$9 \frac{3}{4}$	B	$9 \frac{1}{8}$
C	18	C	$23 \frac{11}{16}$
D	$2 \frac{5}{16}$	D	$5 \frac{1}{2}$

FIG. 3

BEARING SPACER BAR



MODEL	DOOR	NO.	CHAIN LENGTH	OPERATOR SPROCKET	DOOR SPROCKET	DIMENSION (A)	DIMENSION (B)
MCJ-MCJH	WOOD	41	36-1/2"	41B12	41B36	12-1/8"	9-1/2"
MCJ-MCJH	STEEL	41	38-1/2"	41B12	41B45	11-13/16"	9-1/2"
ALDJ	WOOD	41	32-1/2"	41B12	41B30	12-3/16"	9-1/2"
ALDJ	STEEL	41	38-1/2"	41B12	41B36	11-13/16"	9-1/2"
HDCJ	WOOD	50	31-3/4"	50B12	50B24	10-3/4"	8-1/2"
HDCJ	STEEL	50	40-5/8"	50B12	50B36	10-13/16"	8-1/2"



- A. SPACER BAR CENTER DISTANCE.
- B. DOOR SPROCKET
- C. SHAFT COLLAR
- D. DOOR SHAFT
- E. SPACER BAR
- F. TEMPORARY ROPE HANGER.
- G. OPERATOR SPROCKET
- H. SHAFT COLLAR

FIG. 4

LIMIT ADJUSTMENT

1. REMOVE COVER FROM ELECTRICAL ENCLOSURE.
2. DEPRESS TRAVELING NUT RETAINING BRACKET AND TURN TRAVELING NUT.
3. TURNING NUT TOWARD CENTER OF SHAFT INCREASES DOOR TRAVEL.
4. TURNING NUT TOWARD SWITCH DECREASES DOOR TRAVEL.
5. BE SURE RETAINING BRACKET ENGAGES IN SLOT AFTER EACH ADJUSTMENT.
6. USE STOP BUTTON TO STOP DOOR UNTIL LIMITS ARE SET IN CORRECT POSITION.

