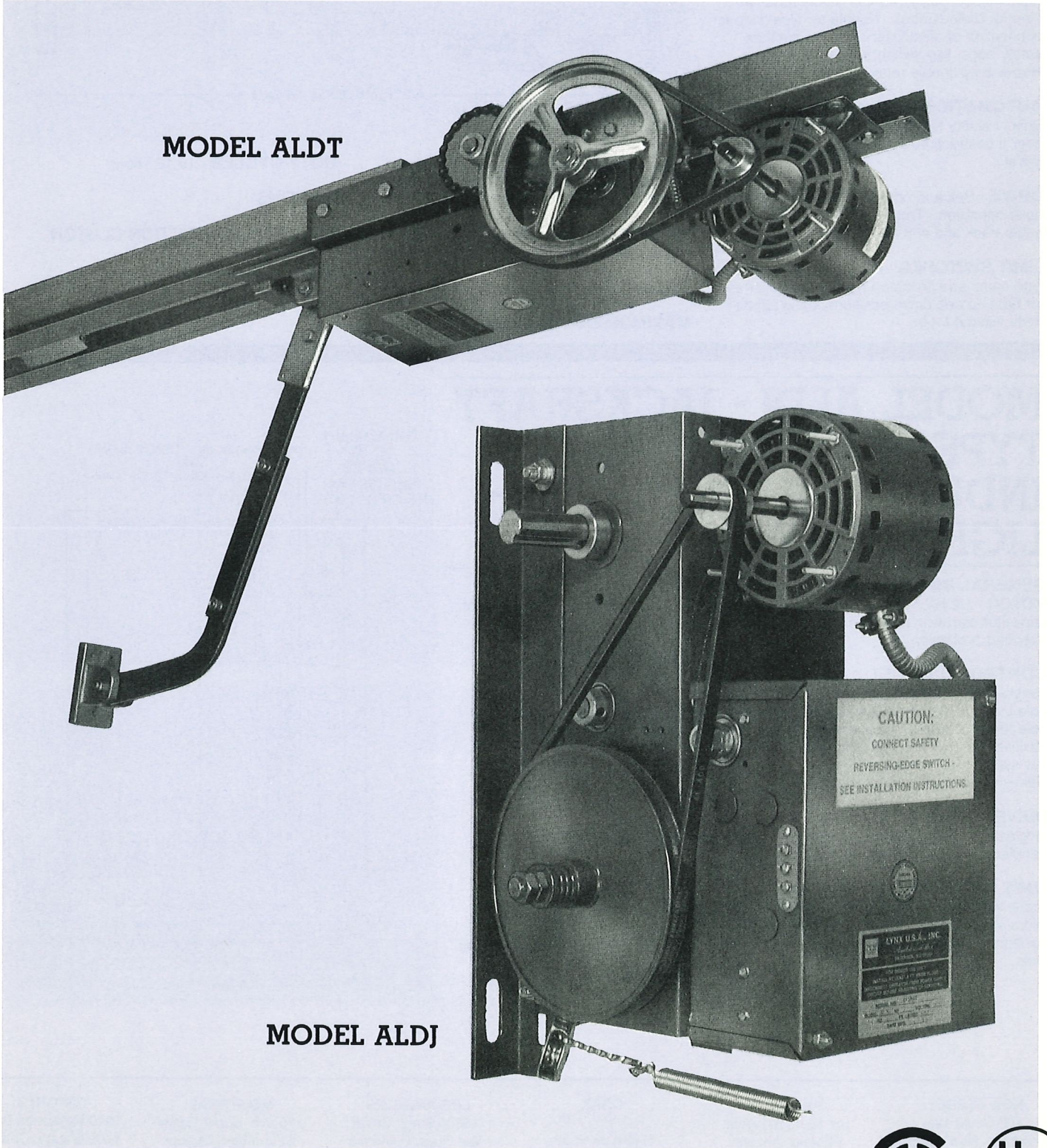


LIGHT DUTY COMMERCIAL OPERATORS



MODEL ALDT

MODEL ALDJ

CAUTION:
CONNECT SAFETY
REVERSING-EDGE SWITCH -
SEE INSTALLATION INSTRUCTIONS

MODEL ALDT - TROLLEY TYPE COMMERCIAL OPERATOR - LIGHT DUTY



GENERAL INFORMATION

MOTOR - 1/2 HP 115 volt single phase capacitor start with built in motor overload protection.

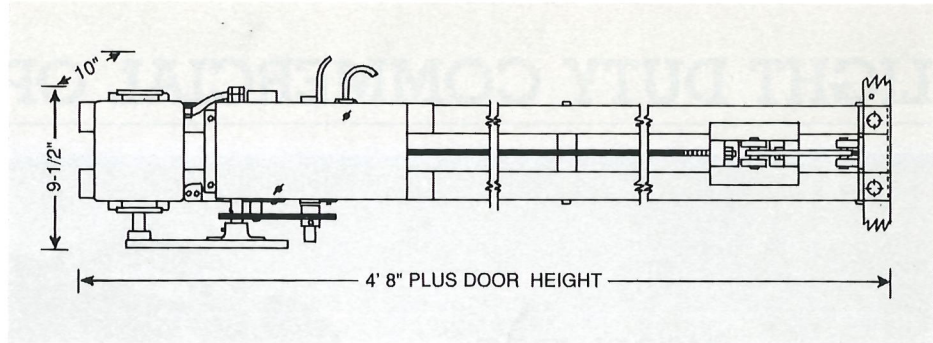
CONTROL - Heavy duty 3 button control (open, close, stop). 24 volt 3 pole terminal strip for radio control. 12 pole terminal strip for connection of all auxiliary devices such as safety edge, key switch, wall control, etc. Heavy duty double relay control.

AUTOMATIC REVERSE

Built in safety reverse will stop and reverse door if obstruction is met during downward travel.

DRIVE - Belt and chain drive for long lasting quiet operation. Trolley operates on dual angle track and #65 roller chain.

LIMIT SWITCHES - Oil impregnated screw type cams and precision type micro switches for both up and down positions, easy adjustment without tools.



DISCONNECT DEVICE - Quick release arm for manual operation in case of power failure.

HEADROOM - 2" minimum from door's highest arc of travel.

BACKROOM - 4' 8" plus door height.

MAXIMUM DOOR HEIGHT - 14'

DUTY CYCLES - 10-12 / hour

OPTIONS:

ADJUSTABLE FRICTION CLUTCH

SOLENOID BRAKE

MODEL ALDJ - JACKSHAFT TYPE COMMERCIAL - INDUSTRIAL OPERATOR - LIGHT DUTY

GENERAL INFORMATION

MOTOR - 1/2 HP 115 volt single phase capacitor start with built in motor overload protection.

CONTROL - Heavy duty 3 button control (open, close, stop). 24 volt 3 pole terminal strip for radio control. 12 pole terminal strip for connection of all auxiliary devices such as safety edge, key switch, wall control, etc. Heavy duty double relay control.

DRIVE - Belt and #41 roller chain for longlasting quiet operation. Power transfer is made with #41 roller chain.

LIMIT SWITCHES - Oil impregnated screw type cams and precision type micro switches for both up and down positions. Easy adjustment without tools.

DISCONNECT DEVICE - Quick release for manual operation in case of power failure.

ADJUSTABLE FRICTION CLUTCH

Provides safety to door and operator during opening and closing cycles and is easily adjusted in the field.

UNIVERSAL SIDE MOUNT - May be easily adapted to right or left side mounting. Side room required 15"

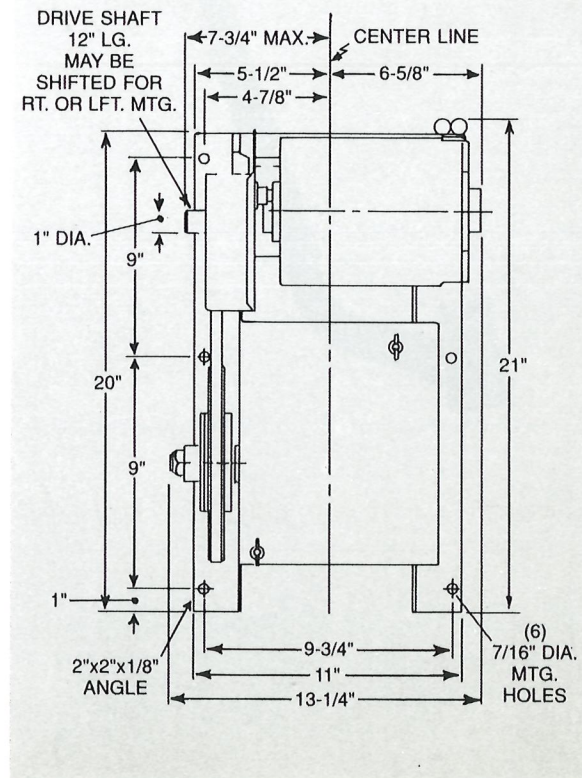
MAXIMUM DOOR HEIGHT - 14'

DUTY CYCLES - 10-12 / hour

OPTIONS:

CHAIN HOIST - Specify Model ALDJ-H

SOLENOID BRAKE - Specify Model ALDJ-B



NEW JERSEY:

166 Gould Ave.
Paterson, New Jersey
07503

Tel.: 201-278-5588

Toll free: 800-234-5969

Fax: 201-742-9832

PHOENIX:

101 North 57th Ave.
Phoenix, Arizona
85043

Tel.: 602-352-1010

Toll free: 800-233-3599

Fax: 602-352-1341

OHIO:

P.O. Box 160
Route 66 South
Archbold, Ohio 43502

Tel.: 419-455-1010

Toll free: 800-338-5399

Fax: 419-446-2616

LOS ANGELES:

15801 Stagg Street
Van Nuys, California
91406

Tel.: 818-908-9935

Toll free: 800-369-6351

Fax: 818-908-1151

MONTREAL:

175 ave. Upper Edison
St-Lambert, Quebec
J4R 2R3

Tel.: 514-866-1068

Fax: 514-466-8852

TORONTO:

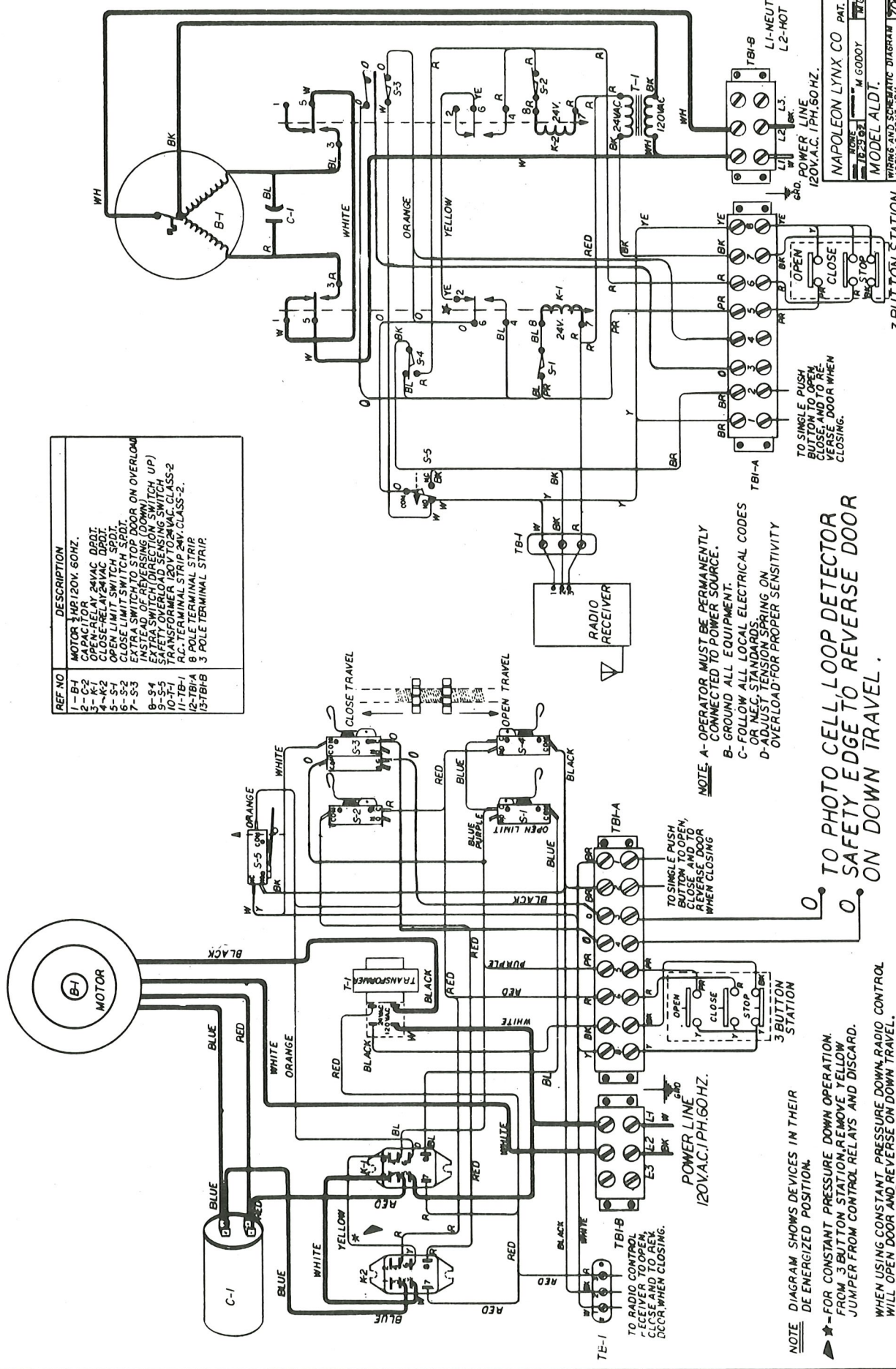
1040 Meyerside Drive
Mississauga, Ontario
L5T 1J4

Tel.: 416-674-4606

Fax: 416-670-0806



REF. NO.	DESCRIPTION
1-BH	MOTOR 1/2 HP 120V. 60HZ.
2-C-2	CAPACITOR
3-K1	OPEN-RELAY 24VAC. DDDI.
4-K2	OPEN-RELAY 24VAC. DDDI.
5-S-2	OPEN LIMIT SWITCH SPDT.
6-S-2	CLOSE LIMIT SWITCH SPDT.
7-S-3	EXTRA SWITCH TO STOP DOOR ON OVERLOAD
8-S-4	INSTEAD OF REVERSING (DOWN) TCH UP)
10-S-5	EXTRA SWITCH (DIRECTION SWITCH)
11-TB-1	TRANSFORMER 120V TO 24V. CLASS-2
12-TB-1	8 POLE TERMINAL STRIP
13-TB-1	3 POLE TERMINAL STRIP



NOTE: A- OPERATOR MUST BE PERMANENTLY CONNECTED TO POWER SOURCE.
 B- GROUND ALL EQUIPMENT.
 C- FOLLOW ALL LOCAL ELECTRICAL CODES OR NEC STANDARDS.
 D- ADJUST TENSION SPRING ON OVERLOAD-FOR PROPER SENSITIVITY

TO PHOTO CELL LOOP DETECTOR SAFETY EDGE TO REVERSE DOOR ON DOWN TRAVEL.

NOTE: DIAGRAM SHOWS DEVICES IN THEIR DE ENERGIZED POSITION.
 FOR CONSTANT PRESSURE DOWN OPERATION FROM 3 BUTTON STATION, REMOVE YELLOW JUMPER FROM CONTROL RELAYS AND DISCARD.
 WHEN USING CONSTANT PRESSURE DOWN, RADIO CONTROL WILL OPEN DOOR AND REVERSE ON DOWN TRAVEL.

WIRES AND SCHEMATIC DIAGRAM 700078
 MODEL ALDI.
 M. GODOY
 PAT. N.J.
 NAPOLEON LYNX CO.
 120V. A.C. 1PH. 50HZ.

MODEL ALDT

LIMITED DUTY COMMERCIAL DRAWBAR OPERATOR

Drawbar type opener designed for limited duty commercial applications. (10-12 cycles per hour) may be used on commercial sectional and solid pivot type doors. Built in automatic safety reverse system. Equipped with heavy duty 3 bottom control station (open, close, stop). Shipped unassembled. Shipping weight approximately 90 lbs.

CONTROL WIRING

B-2 WIRING-8 POLE TERMINAL STRIP - with connections for 3 button 24 volt control station with momentary contact on open, close, stop. Single button station, key switch, and auxiliary safety devices to reverse door when closing.

RADIO CONTROL - pre-wired for 3 terminal radio control 24 volt

FEATURES

Automatic safety reverse- If the door is traveling downward and meets an obstruction, it will reverse to the open position.

MODEL	H.P.	VOLTAGE PHASE	MAXIMUM HEIGHT	MAXIMUM WEIGHT	LIST PRICE
ALDT-211	1/2	115/1	14'	500	

OPTIONS

OPTION	LIST
Adjustable friction clutch	

MODEL ALDJ & ALDJ-B

LIMITED DUTY COMMERCIAL JACKSHAFT OPERATOR

Jackshaft type opener designed for limited duty commercial applications. (10-12 cycles per hour) may be used on commercial sectional doors with high lift or vertical lift; rolling steel doors and grills.

Equipped with heavy duty 3 button control station (open, close, stop). Shipped unassembled. Shipping weight approximately 65 lbs.

CONTROL WIRING

B-2 WIRING-8 POLE TERMINAL STRIP - with connections for 3 button 24 volt control station with momentary contact on open, close, stop. Single button station, key switch, and auxiliary safety devices to reverse door when closing.

RADIO CONTROL - pre-wired for 3 terminal radio control 24 volt

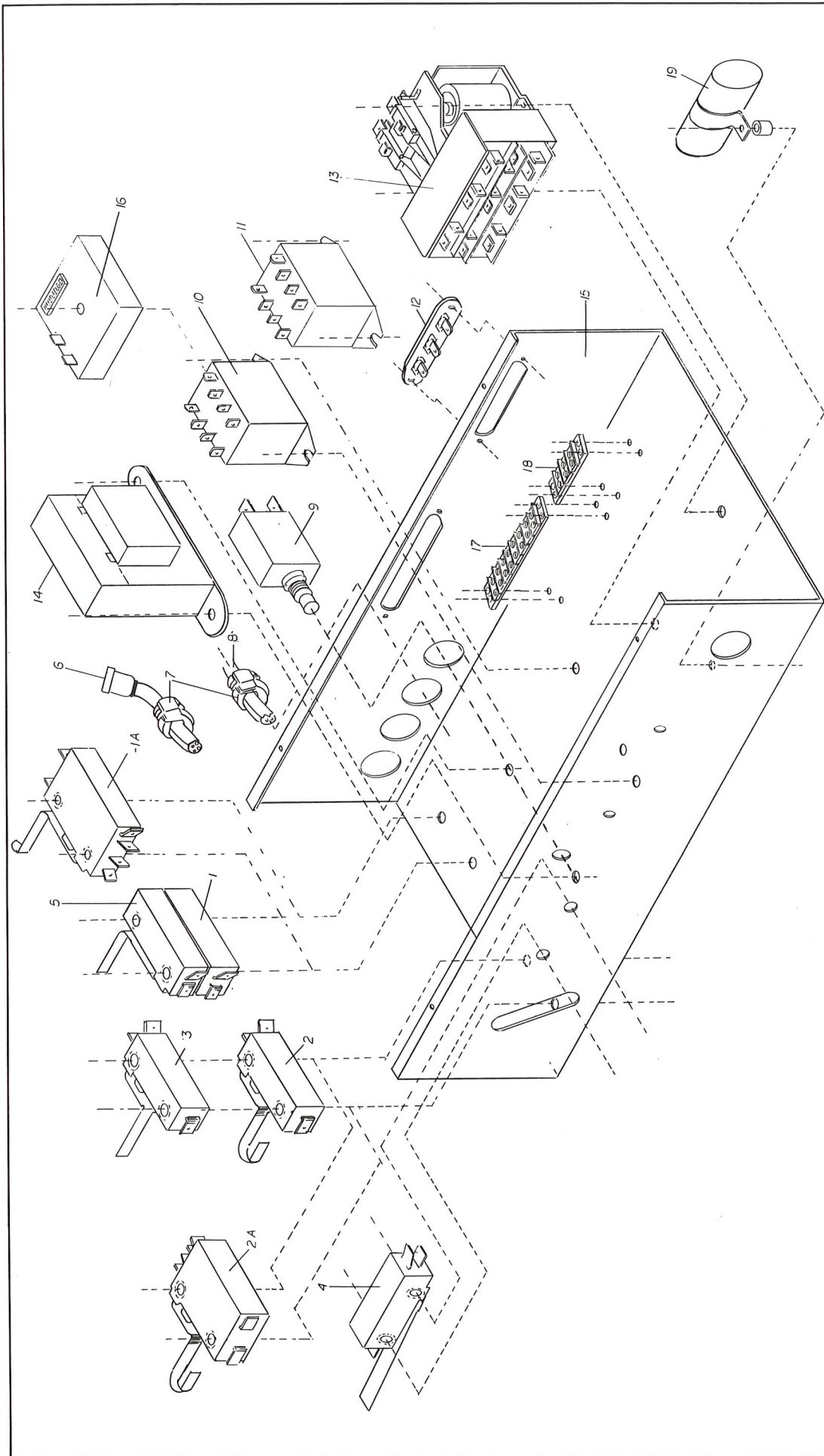
FEATURES

- Shaft out put speed 64 R. P. M.*
- Adjustable Friction clutch*
- Floor level disconnect*
- Universal side mount*
- Shaft spreader bar - Maintains drive chain tension*
- ALDJ-B - Solenoid disc brake - Heavy duty self adjusting type*

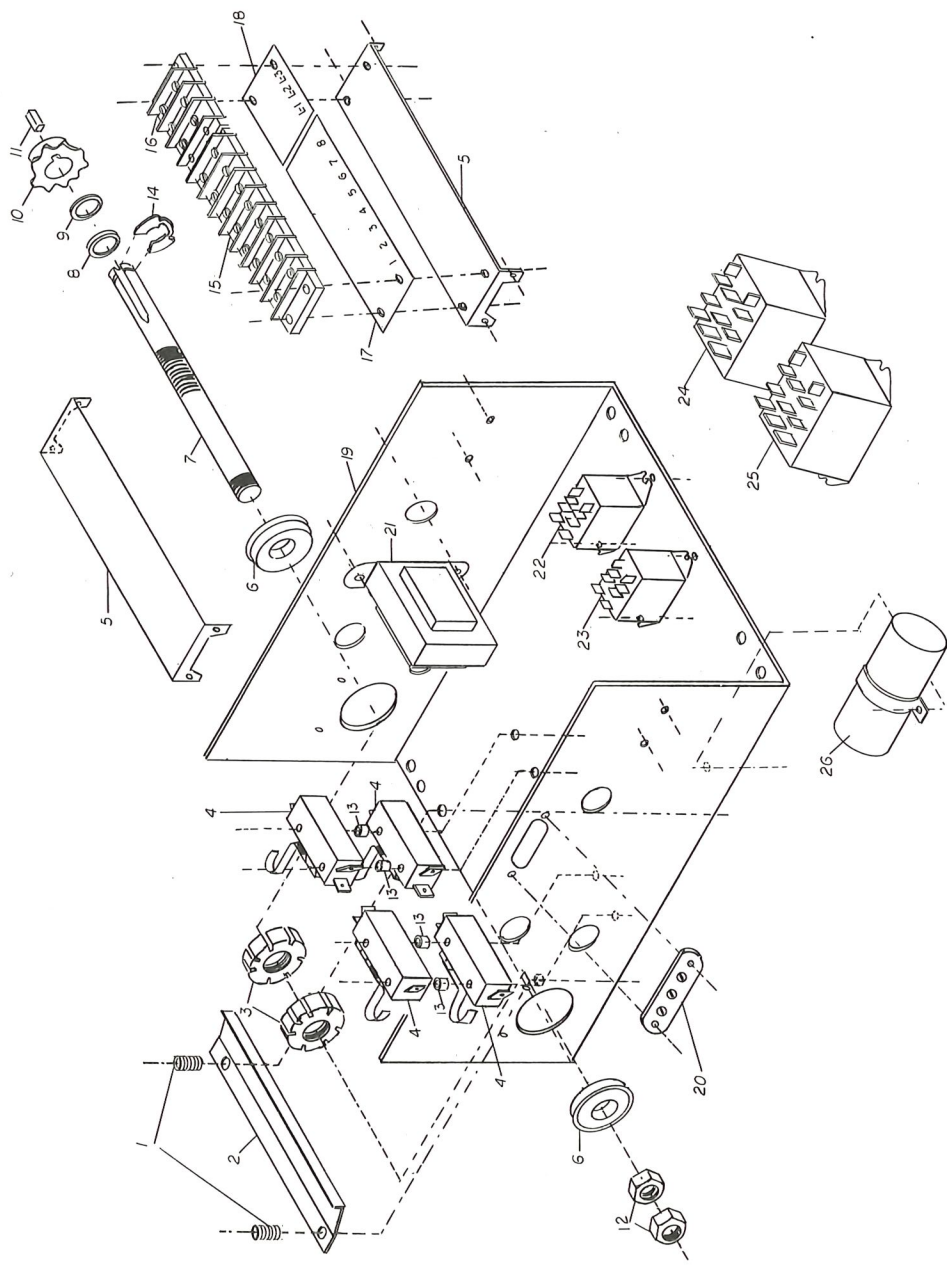
MODEL	H.P.	VOLTAGE PHASE	MAXIMUM HEIGHT	MAXIMUM WEIGHT	LIST PRICE
ALDJ-211	1/2	115/1	14'	500	
ALDJ-B-211	1/2	115/1	14'	500	

OPTIONS

OPTION	LIST
Chain hoist for manual operation	
S.D.R. Sprocket 1" Shaft	
S.D.R. Sprocket 1-1/4" Shaft	



NAPOLEON LYNX CO. PAT. N.J.
 MADE IN U.S.A.
 MODEL NO. MAGODDY
 DATE: 11/25/93
 EXPLODED VIEW ELECTRICAL BOX MODELS:
 ALDT-ATC3-AMCA-AMCA-T-AMRA-TAMRAITBC
 700094



NAPOLEON LYNX CO. PAT. N.J.
 MADE IN U.S.A.
 MODEL'S A-D-J-A-D-U-I-F-A-L-D-B-A-L-D-S-I-B-T
 ELECTRICAL BOX
 EXPLODED VIEW. 700102

